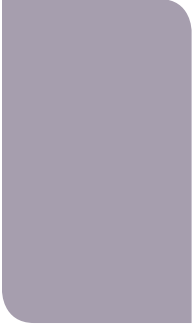




AUGUST 2014
VOLUME 39
NUMBER 4

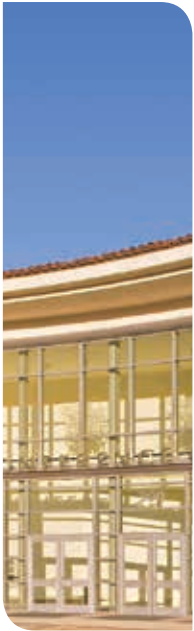



let's tweet!
@OTACnews
#OTACconf2014



38TH ANNUAL CONFERENCE OCTOBER 16-19, 2014 • PASADENA

OCTOBER 16 PRE-CONFERENCE SESSIONS
HILTON PASADENA & PASADENA CONVENTION CENTER



AOTA | The American Occupational Therapy Association, Inc.
State Affiliate



IN PURSUIT OF THE
VISION
DIVERSITY IN OCCUPATIONAL THERAPY

Every Step of Your Career

PREFERRED HEALTHCARE



 Travel

 Per Diem

 Permanent Placement

Opportunities Across the Nation!

**Come See Us At Booth #207 and Ask About Our
\$2000 Sign-on Bonus!**

Physical Therapist ■ Physical Therapy Assistant
Occupational Therapist ■ Certified Occupational Therapy Assistant
Speech-Language Pathologist ■ Audiologist ■ Recreation Therapist

800.787.6787 ■ PreferredRegistry.com

CONFERENCE OVERVIEW

THURSDAY, OCTOBER 16

9:00am – 5:00pm

Pre-Conference Sessions (earn PDUs)

Additional fees.

6:00pm – 8:00pm

Registration Material Pick-Up

If you registered in advance, this is a convenient opportunity to pick up your registration materials.

6:00pm – 8:00pm

Meet 'n' Mingle

No-host opportunity to jumpstart your networking.

6:45pm – 9:00pm

Movie Night: *The Lookout* (.5 PDU)

About *The Lookout*: Chris is a once promising high school athlete whose life is turned upside down following a head injury due to a tragic accident made of his own negligence. The accident has left him unable to perform basic daily functions. As he tries to maintain a normal life, he takes a job as a janitor at a bank, where he ultimately finds himself caught up in a bad situation. Movie reviews characterize this as a stirring crime drama with an exceptionally strong script and equally strong characters. Rated R.

FRIDAY, OCTOBER 17

6:45am – 7:30am

Mind-Body Activity: Gentle Yoga

8:30am – 11:30am

Concurrent Sessions (earn PDUs)

11:30am – 1:00pm

CFOT Luncheon, Symposium, and Awards (.5 PDU) \$50/\$35 Students

1:00pm – 3:00pm

Concurrent Sessions (earn PDUs)

3:15pm – 4:15pm

Keynote Address (.5 PDU)

Featuring Michael K. Iwama, PhD, OT(C)

4:15pm – 5:15pm

Awards Ceremony

5:15pm – 7:30pm

Exhibit Hall Grand Opening Reception

7:30pm – 9:00pm

Alumni and Student Receptions

SATURDAY, OCTOBER 18

6:45am – 7:45am

Mind-Body Activity: Fun Run/Walk

8:30am – 11:30am

Concurrent Sessions (earn PDUs)

11:30am – 2:30pm

Exhibit Hall Activities, including Poster Presentations (earn PDUs)

2:30pm – 5:30pm

Concurrent Sessions (earn PDUs)

5:30pm – 6:30pm

President's Reception

Celebrating occupational therapy in physical disabilities practice.

6:30pm – 8:30pm

Scavenger Hunt \$15

8:30pm – 10:30pm

After Hours Lounge and Party

DJ, Dance Floor and Photo Booth.
Performance by Limitless.

SUNDAY, OCTOBER 19

6:45am – 7:30am

Mind-Body Activity: Easy Hip-Hop

8:30am – 11:30am

Concurrent Sessions (earn PDUs)

11:30am – 1:00pm

OTAC Luncheon and Annual Meeting (.5 PDU)

1:00pm-4:00pm

Concurrent Sessions (earn PDUs)

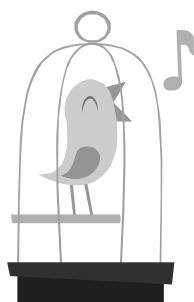
Call for Conference Volunteers

Are you interested in volunteering at Conference?

Volunteering is a great way to learn more about Conference operations, meet other dynamic occupational therapy practitioners, enhance your Conference experience, and have fun. There are many opportunities to contribute. You can volunteer at Conference and still participate in other activities. Volunteers play a vital role in the success of the West Coast's largest occupational therapy professional development conference.

You can access the volunteer form on our website at www.otaconline.org in the Annual Conference section.

Deadline to respond: October 3, 2014.



Tweet Rewards!

Two prime seats in every session will be reserved for attendees tweeting about their Conference experience and sessions.

Follow us on Twitter @OTACnews
Start a conversation using #OTACconf2014

TABLE OF CONTENTS

Conference Overview.....	3
Deadlines to Remember; Important Notes.....	4
Hotel and Convention Center Information.....	5
President’s Message; Conference Committee.....	6
Keynote Address.....	6
Chair’s Message; About Pasadena.....	7
Special Conference Activities.....	8
Celebrate Physical Disabilities Practice.....	9
OTAC Award Honorees.....	10
CFOT Luncheon and Symposium.....	11
Special Programming for Students.....	12
Schedule (includes Courses and Daily Activities)	
Thursday, October 16 (Pre-conference).....	13
Friday, October 17.....	14
Saturday, October 18.....	17
Sunday, October 19.....	20
Conference Presenters.....	22
Poster Presentations.....	24
Conference-at-a-Glance.....	26
Conference Registration Instructions.....	28
Conference Registration Form.....	29
Exhibitors, Sponsors, and Advertisers.....	30

OTAC ANNUAL CONFERENCE

A Premier Professional Development Conference— Earn Professional Development Units

OTAC’s Annual Conference offers high quality continuing education at cost-effective prices. Conference attendees have the opportunity to select from more than 140 hours of sessions to apply towards continuing education requirements. You can earn all 24 biennial required PDUs for your California license renewal all at this one Conference (includes additional fee activities). You won’t find an easier, quicker or more cost-effective way to earn PDUs required by CBOT (for direct-delivery of occupational therapy services) and by NBCOT (for practice area of emphasis). We recommend that you register early for Conference to ensure acceptance into your preferred sessions.

OTAC members receive a discount on the Conference registration fees. If you are not a member, join now at special Conference rates to earn the Conference discount.

CONFERENCE DISCOUNTED EARLY BIRD REGISTRATION SPECIALS!

- Attend all three days (October 17-19) for only \$309! Must register by September 4, 2014 for this rate.
- OTAC Student Members: check out student reduced fees. Must pre-register!

2014 Deadlines to Remember

September 4	Discounted Early Bird Registration Special deadline. (BEST VALUE!)
September 5 - October 3	Registration rates increase by \$60 (\$309 + \$60 = \$369).
September 24	Cut-off date for hotel reservations. Room block may sell out before this date; make your reservation today.
October 3	Advanced registration closes at 8:59pm. After this date/time you must register at the event. Onsite fees at the Conference increase by \$90 (\$309 + \$90 = \$399).
	Special meal and needs requests deadline. You must register and submit your requests in writing by this date in our efforts to accommodate you.
	Cut-off date for Workplace Colleague discount and to submit Conference Volunteer Form.

Important Notes

2014 Certificate Policy and PDU Credits

- **Individual Session Tickets.** When you check in at the Conference Registration Counter, you will receive a blue ticket imprinted with your name on it for every session and activity for which you are registered. The room monitor will collect the tickets as you enter every session and activity room. If the room monitor does not collect your ticket, please seek him/her out. These tickets are maintained at the OTAC office as verification of your attendance in the event of a CBOT audit.
- **Certificate of Completion.** When you check in at the Conference Registration Counter, you will receive a Certificate of Completion form. Fill in the appropriate information for every session you attend. At the conclusion of your attendance at the Conference, submit the white copy of the Certificate of Completion form at the OTAC Conference Registration Counter. Keep the yellow copy for your own records. OTAC will keep an electronic version on file along with the blue tickets for each session as verification in the event of an audit.
Sponsor: Stanbridge College
- **To earn a Certificate of Completion, attendance is required.** Please arrive on time to the sessions. Your certificate should reflect actual number of hours attended. Note: CBOT defines one PDU as one hour of instruction.
- **myotlicense.** PDUs for OTAC members and subscribers will be entered into your myotlicense record by December 1, 2014.
- **CBOT.** Select PDUs may be used for Advance Practice Approval as indicated. Check with the California Board for Occupational Therapy (CBOT) for details.
- **CHT.** Some sessions may be used to meet recertification requirements. Check with the Hand Therapy Certification Commission (HTCC).
- **NBCOT.** Sessions may be used to meet recertification. Check with the National Board for Certification of Occupational Therapy (NBCOT) for details.



Conference PDUs for OT/OTA practitioners will be entered into myotlicense records by December 1, 2014.

CONFERENCE INFORMATION

Conference Hotel

Hilton Pasadena

168 South Los Robles Avenue
Pasadena, CA 91101
(626) 577-1000; toll-free (800) 445-8667

OTAC reserved a block of sleeping rooms at the Conference hotel, Hilton Pasadena. Room rates of \$133 are available for Wednesday, October 15 through Sunday, October 19, 2014. When booking your room, please indicate you are attending the OTAC 2014 Annual Conference. *The deadline to receive the OTAC special rate is Wednesday, September 24, 2014.* (Rates and space upon availability.)

Hotel reservations are now open. You may also reserve your sleeping room online. The link is available on the OTAC website, www.otaconline.org.

The Hilton Pasadena is a short walk from the Pasadena Convention Center, and shops and restaurants, as well as just several blocks from historic Old Pasadena and the Playhouse District. The hotel's lobby and lounge are contemporary, modern, and welcoming. The Hilton Pasadena also offers a complimentary shuttle within a two-mile radius of the hotel.

We encourage you to stay at the Hilton Pasadena to ensure that OTAC meets its contractual obligations for the sleeping rooms that we have set aside for the attendees. The Association pays a penalty if all the reserved sleeping rooms are not utilized.



Pasadena Convention Center

300 E. Green Street, Pasadena, CA 91101

Most of the Annual Conference activities will be held at the Pasadena Convention Center, both in the Conference Building and in the Exhibit and Ballroom Building. See the Conference-at-a-Glance on pages 26 and 27 for the schedule overview and location of activities.

Parking

Hilton Pasadena. If you are staying at the Hilton Pasadena, you may either self park or valet. Valet for event parking is \$10 per day and does not include in/out privilege. Overnight valet for hotel guests is available for \$18 per overnight stay and does include in/out privileges. An adjacent parking structure is available for parking as well; current pricing is \$9 per day and overnight parking is \$15 per day. *All prices are subject to change.*

Pasadena Convention Center.

Daily Parking Rate: \$9. On-site Parking: 800 spaces. Two entrances: Marengo Avenue to the west and Euclid Avenue to the east between Green Street and Cordova. *All prices are subject to change.*

Additional Parking.

2,500 spaces within a one-block radius. *Note: OTAC does not validate for parking.*

Transportation

AIRPORTS

Bob Hope/Burbank Airport (BUR)

(16 miles to Pasadena)
2627 N. Hollywood Way, Burbank, CA
(818) 840-8840 • www.bobhopeairport.com

Los Angeles International (LAX)

(32 miles to Pasadena)
1 World Way, Los Angeles, CA
(310) 646-5252 • www.lawa.org/lax

Ontario International (ONT)

(37 miles to Pasadena)
2900 E. Airport Drive, Ontario, CA
(909) 937-2700 • www.lawa.org/ont

PUBLIC TRANSPORTATION

Union Station Flyaway

(866) 435-9529 • www.lawa.org/flyaway

Nonstop bus service to and from Los Angeles International Airport (LAX) via Union Station in downtown Los Angeles. From Union Station, passengers can ride the Gold Line light rail to Pasadena. Exit Del Mar Station for the Pasadena Convention Center (approximately five blocks).

SHUTTLE SERVICE

Prime Time Shuttle

(800) 733-8267 • www.primetimeshuttle.com

Supershuttle

(800) 258-3826 • www.supershuttle.com

TAXI SERVICE

People's Taxi • (800) 505-2227

Yellow Cab • (626) 796-3111

METRO RAIL SERVICE

Metro Gold Line

(323) 466-3876 • www.mta.net

Travels from Union Station in downtown Los Angeles to Pasadena and six points in between (connects to other lines at Union Station).

MIND-BODY ACTIVITIES — YOGA! WALK/RUN! HIP-HOP!



The Conference Committee is pleased to again offer complementary mind-body activities on Friday, Saturday, and Sunday mornings – gentle yoga on Friday, brisk fun walk/run on Saturday, and easy hip-hop on Sunday. These activities are designed for any skill level.

CONFERENCE TIP

Make your Conference session selections carefully. Many of our sessions fill up in advance of onsite Conference proceedings and may not be available if you attempt to change. In addition, requesting changes to your session selections onsite may lead to long waits in line at the Registration counter.

PRESIDENT'S MESSAGE

Dear Conference Participants:

We are pleased to be back in Pasadena for the 2014 Occupational Therapy Association of California (OTAC) 38th Annual Conference. The Conference Committee has put together a wide range of high-quality educational sessions with exceptional speakers, along with a variety of special events and activities to meet your learning, professional development, and networking needs. The city of Pasadena has worldwide recognition as the host of the Rose Parade, for which OTAC is leading the initiative to have a Centennial float celebrating occupational therapy in the 2017 parade, and the excitement is building across states. Pasadena is a great conference destination as well that offers entertainment, shopping, dining, cultural and arts programs, and children's and family activities, many of which are within walking distance of the Conference hotel and the Pasadena Convention Center.

Our Conference theme, *In Pursuit of the Vision: Diversity in Occupational Therapy*, is particularly relevant, not only because California is known for its diverse population, geography and terrain, entertainment, cultural and arts events, and business and educational opportunities; but also because occupational therapy is a profession that embodies diverse areas of practice along the entire health continuum, serves people of all ages and backgrounds, and has great flexibility in the techniques, intervention approaches and methods utilized to promote and help people engage in occupations and participate in everyday life.

Our keynote address by Michael K. Iwama, PhD, OT(C), *Addressing Diversity: Occupational Therapy's Promise of Cultural Relevance*, promises to be a thoughtful and engaging discussion of occupational therapy from a global and cultural perspective and how we can meet the challenge of delivering occupational therapy to a diverse population. Dr. Iwama continues the discussion in more depth during an additional session on Sunday, and several presenters also examine different aspects of diversity such as cultural fluidity and occupational therapy with under-served populations, which addresses our vision of a "globally connected, diverse workforce meeting society's occupational needs."

We have a full program of session presentations and posters by practitioners, students, educators, researchers, and policy and legislative leaders that covers topics across areas of practice, client populations, and practice settings offered in multiple tracks. Sessions address traditional and emerging areas of clinical practice; advanced practice knowledge and skills; intervention approaches and techniques; client-centered care and patient self-management; fieldwork and supervision; quality improvement; emerging trends in health care and reimbursement; legislative issues and advocacy; evidence-based practice and occupational therapy research, and technology and social media.

Take advantage of the Exhibit Hall, always an energizing experience, where you can meet with vendors and potential employers, network and catch up with colleagues and friends, and get the latest information on products and services. Be sure to stay for the Annual Awards Ceremony directly following the Keynote Address to honor and recognize those who have made significant contributions to the profession through their excellence and leadership in occupational therapy. Also, join us for the President's Reception on Saturday to highlight and celebrate OT practice in physical disabilities.

Volunteers at the Hospitality Booth will be available to provide information and assistance on "all things Pasadena" and Conference activities and events, including mind-body activities, a scavenger hunt, and other activities scheduled before and after each day's sessions. Their aim is to make your Conference experience stress-free and enjoyable, as well as give you and your families an opportunity to get to know and see Pasadena.

Join us for our 38th Annual Conference in Pasadena for a premier educational event where you can increase your knowledge, get your PDUs, network with your colleagues, make new acquaintances, promote the distinct value of occupational therapy, see the latest products in the Exhibit Hall, explore Pasadena, and have fun! I look forward to seeing you there! @OTACnews #OTACconf2014 #OTdistinctvalue



Patricia Nagaishi,
PhD, OTR/L, OTAC
President

Patricia S. Nagaishi

Patricia S. Nagaishi, PhD, OTR/L
President, Occupational Therapy Association of California

Photo Credit: Cover Photo of Patricia Nagaishi courtesy of Amanda Davies. Many other photos courtesy of Diana Su-Erickson.

2014 CONFERENCE COMMITTEE

Chair - Akemi Davies
Audio-Visual/Signage Coordinator - Wendi Lee
Call For Papers Coordinator - Samia Rafeedie
Communications Coordinator - Arameh Anvarizadeh
Photographer - Diana Su-Erickson
Proofreader - Lisa Deshaies
Events Coordinator - Lora Woo
Awards Coordinator - Victoria Badaro
Exhibits Coordinator - Mary Kay Gallagher
Hospitality Coordinator - Sabrena McCarley
Program Coordinators - Akemi Davies and Jessica Kersey
Registration Coordinator - Shari Francesconi
Student Track - Gigi Smith and Jennifer Weaver
Volunteer and Wellness Events Coordinator - Carlin Daley
OTAC President - Pat Nagaishi
OTAC Contributing Staff - Karen Polastri, Deidre Bryant,
Donna Dawson, Wendy Fardanesh, Shannon Rutledge,
Tammy Hitchcock

KEYNOTE ADDRESS

3:15pm – 4:15pm
Friday, October 17, 2014

Addressing Diversity: Occupational Therapy's Promise of Cultural Relevance (.5 PDU)

Dr. Iwama is an innovative thinker and internationally known champion of culturally relevant occupational therapy. He is one of our profession's leading theorists, and created the "Kawa River Model," which has been incorporated into occupational therapy curricula and clinical settings worldwide. Dr. Iwama has doctoral degrees in medical and cultural anthropology, and in sociology; a master's degree in rehabilitation science; and bachelor's degrees in occupational therapy and human performance/kinesiology.

Earn .5 PDU
Sponsor: West Coast University



Michael K. Iwama,
PhD, OT(C)
Chair and Professor,
Department of
Occupational Therapy,
Georgia Regents
University

CHAIR'S MESSAGE

Dear Occupational Therapy Practitioners, Educators, Students, Colleagues, and Friends:

On behalf of the Occupational Therapy Association of California (OTAC) and the Annual Conference Committee, I am honored to invite you to the 38th Annual Conference in Pasadena, California. As a past resident of Pasadena, I am so excited to be meeting you in one of my favorite places! Our Conference theme this year is *In Pursuit of the Vision: Diversity in Occupational Therapy* and I can't think of a better way to celebrate than having the many areas of our practice joining together at our 38th Annual Conference.

I am also very excited that Michael K. Iwama, PhD, OT(C) will kick off our Conference this year as our Keynote Speaker! Dr. Iwama is well-known internationally and is a champion of culturally relevant occupational therapy. He is one of our profession's leading theorists, and created the "Kawa River Model," which has been incorporated into occupational therapy curricula and clinical settings worldwide. Conference participants will also have the opportunity to hear more about Dr. Iwama's model in a three-hour session on the Kawa Model with "Like a River: Meeting the Challenge of Diversity in Occupational Therapy."

Each year, the conference committee and our staff at Association Resource Center (ARC) collaborate throughout the year to create a current and relevant conference to support a wide variety of occupational therapy attendees. With all of you in mind, we aim to offer a high-quality, professional program. This year, the brochure highlights a diverse and outstanding group of professionals who are eager to share their ideas, studies, findings, programs, and current topics with you. We will also highlight and celebrate occupational therapy's Physical Disabilities practice area.

After your sessions, spend some time exploring Pasadena! This beautiful city within the Los Angeles area is known for its fantastic food, culture, art, and architectural treasures such as the historic Rose Bowl and The Gamble House.

Last but not least, don't miss the extra perks! Conference will include: mind and body events to get you moving before sessions, the Awards Ceremony that follows the Keynote, our popular exhibitor's exposition, and an exciting wheelchair-dance team that will make their debut at the After Hours Lounge.

Please, come join OTAC's biggest event of the year in Pasadena! I encourage you to engage in the exceptional and diverse professional development opportunities that the 38th Annual Conference has to offer!

See you in October!



Akemi Davies, MA, OTR/L
Chair, OTAC 38th Annual Conference



Akemi Davies, MA,
OTR/L

ABOUT OUR HOST CITY — PASADENA

Come learn and play in Pasadena!

A dynamic city centered in beautiful Southern California, Pasadena is a city of discovery—from dining and shopping to theatre and art galleries. Pasadena is an enticing combination of accessibility and culture. It is home to more cultural attractions than any other city of its size in California.

There is a lot to explore in all three of Pasadena's inviting and novel districts that blend past, present, and future. Within Pasadena's 1.5 mile downtown core, you will find most retail areas, cobblestone courtyards, sidewalk bistros, and nightlife.

Old Pasadena: A bustling urban center with top-rated restaurants, boutiques, exclusive national retailers, and exciting nightlife that fill its Victoria-, Mission Revival- and Art Deco-era buildings. The 22-block area is listed on the National Register of Historic Places.

Playhouse District: An eclectic mix of antique sellers, museums, bookstores, restaurants, and one-of-a-kind shops—all enhanced with culture and 1920s architecture, it is also on the National Register of Historic Places.

South Lake Avenue District: A European-style tree-lined avenue, the South Lake Avenue District is flanked by a mixture of Pasadena institutions like Pie 'n Burger as well as brand-name stores and restaurants.

Paseo Colorado: A luxurious open-air promenade featuring more than 60 street-front shops, an upscale grocery store, and a movie theatre, is located directly across the street from the Pasadena Convention Center.

You can also take advantage of the five different artpass tours: Grand Pasadena, Mansions, Gardens, Pacific Rim, or Millionaires' Row. You can mix and match these tours to create your own experience.

This cosmopolitan city is easily accessed from Burbank-Glendale-Pasadena, Los Angeles International, Long Beach, and Ontario airports; shuttles, buses, and light rail take you anywhere in the city and the greater Los Angeles area. The Pasadena Convention Center is one half mile from the Gold Line Commuter Rail Station and within walking distance of three bus stops.

Learning in Pasadena is enhanced with the \$150-million Convention Center expansion. In addition, Pasadena has wholly embraced the green philosophy. For example, 95 percent of the construction waste from the expansion was recycled and it is designed to perform 32 percent better than California's energy efficiency standards. In March 2008, *Popular Science* recognized Pasadena as 'one of the 50 greenest cities in the nation.'

DID YOU KNOW?

Pasadena is the birthplace of Julia Child and home to one of the 15 Le Cordon Bleu cooking schools in the country, as well as the location of the first Trader Joe's grocery market. No wonder it is a foodie's paradise!

SPECIAL CONFERENCE ACTIVITIES

The OTAC Annual Conference offers much more than the opportunity to earn professional development units. It is also an opportunity to network with friends and colleagues, to make interesting contacts, to discover new resources, and to fully immerse yourself in all the activities designed to support you and the profession.

Movie Night: *The Lookout* (.5 PDU)

Thursday, October 16 • 6:45pm – 9:00pm
Hilton Pasadena

About *The Lookout*: Chris is a once promising high school athlete whose life is turned upside down following a head injury due to a tragic accident made of his own negligence. The accident has left him unable to perform basic everyday functions. As he tries to maintain a normal life, he takes a job as a janitor at a bank, where he ultimately finds himself caught up in a bad situation. Movie reviews characterize this as a stirring crime drama with an exceptionally strong script and equally strong characters. Facilitated discussion follows. Rated R.

CFOT Awards Lunch and Symposium (.5 PDU) – \$50*

Friday, October 17 • 11:30am – 1:00pm
Pasadena Convention Center

Recipients of the 2014 CFOT scholarships, research grants and awards will be announced, including honoring the CFOT Humanitarian of the Year. Following the presentation of awards, attendees will be treated to a stimulating address by this year's esteemed lecturer and Humanitarian of the Year Heather Javaherian-Dysinger, OTD, OTR/L.

Note: You may attend this event even if you are not attending any other part of the Conference. Use the Conference Registration Form on page 29 to purchase tickets. *Student discount ticket - \$35.

Keynote Address (.5 PDU)

Friday, October 17 • 3:15pm – 4:15pm
Pasadena Convention Center

Addressing Diversity: Occupational Therapy's Promise of Cultural Relevance

Michael K. Iwama, PhD, OT(C), Chair and Professor, Department of Occupational Therapy, College of Allied Health Services, Georgia University, Neurosciences, Thomas Jefferson University
Sponsor: West Coast University

OTAC Awards Ceremony

Friday, October 17 • 4:15pm – 5:15pm
Pasadena Convention Center

You are invited to help us recognize our 2014 Award honorees who serve with excellence and inspire professional passion. You will have a chance to congratulate the Award honorees in the Exhibit Hall.

Exhibit Hall

Friday, October 17 • 5:15pm – 7:30pm
Saturday, October 18 • 11:30am – 2:30pm
Pasadena Convention Center, Exhibit Hall

Don't miss Friday's lively Grand Opening Reception sponsored by our exhibitors. This fun and informal atmosphere offers the perfect opportunity to learn about products and services useful to occupational therapy practitioners as well as to talk with representatives who are actively recruiting for their companies. Saturday's session offers a convenient lunch option for purchase right on the Exhibit Hall floor and an opportunity to meet with any exhibitors you didn't connect with on Friday. Don't forget that the Exhibit Hall also offers giveaways and cash prizes. Visit exhibitors to be eligible.

Stop by the OTAC Membership Booth—it is the central hub of activity: meet with OTAC leaders, learn about OTAC and win prizes while you learn, and more!

Poster Presentations (earn PDUs)

Saturday, October 18 • 11:30am – 12:30pm and 1:30pm – 2:30pm
Pasadena Convention Center, Exhibit Hall

See pages 24 and 25 for a list of posters; earn PDU credits.

Alumni and Student Receptions

Friday, October 17 • 7:30pm – 9:30pm
Hilton Pasadena

Celebrate the conclusion of the first day of learning with these networking opportunities. The Alumni and Student Receptions are always a highlight of Conference. Express your appreciation to our OT and OTA colleges and universities with your support.

THE DANCE TROUPE, LIMITLESS, TO KICK-OFF THE AFTER HOURS LOUNGE AND PARTY

Limitless is a community organization with a mission to embrace individuals of all backgrounds and abilities; and enable opportunities to create beautiful things together. Founded by two occupational therapy practitioners, the organization began with a mission to promote the concept that anybody can dance, anywhere, anytime. The first ever "So You Think You Can't Dance" class/program began as part of the Wellness Center at Rancho Los Amigos National Rehabilitation Center in 2011 and provided opportunities for individuals of all abilities to dance together. After seeing countless participants light up on the dance floor, smiling and moving in ways that they never dreamed possible, this small vision to start a local hospital-based dance program became a dream to change the entire dance community and the world! www.limitlessdance.org



SPECIAL CONFERENCE ACTIVITIES

President's Reception

Saturday, October 18 • 5:30pm – 6:30pm
Hilton Pasadena

All Conference attendees are invited to relax and network at this event (cash bar). Come meet OTAC and AOTA leaders, presenters, and other honorees. Join us for a special feature celebrating the work of OT/OTAs practicing in physical disabilities.

Scavenger Hunt – Come Explore Pasadena! \$15

Saturday, October 18 • 6:30pm – 8:30pm
Hilton Pasadena

After Hours Lounge and Party

Saturday, October 18 • 8:30pm – 10:30pm
Hilton Pasadena

Music! Networking! Photo Booth! Good Times! Featuring DJ Mag 10 and a special performance by Limitless, a community organization that strives to celebrate diversity through dance, promoting positive expression through art and music, and asking people to work together to create a peaceful, healthy world. www.limitlessdance.org

OTAC Annual Meeting and Luncheon

Sunday, October 19 • 11:30am – 1:00pm
Pasadena Convention Center

This event is included in your registration fee (if you selected any combination that includes Sunday). OTAC President Patricia S. Nagaishi, PhD, OTR/L, invites you to learn about updates on the Association as well as to hear from special invited presenter, Shawn Phipps, PhD, MS, OTR/L, FAOTA, on *OTAC and AOTA: A Collaborative Effort Elevating the Power of OT*. He will provide critical updates on AOTA's strategic priorities leading up to the Centennial Vision, a national perspective on California's role in the Affordable Care Act and the national OT landscape, and how embracing quality patient-care can elevate the power of OT.

Note: You may attend this event even if you are not attending any other part of the Conference. Use the Conference Registration Form on page 29 to purchase tickets.

Sponsor: West Coast University

Mind-Body Balance Opportunities

Friday, October 17 – Gentle Yoga
Saturday, October 18 – Fun Walk/Run
Sunday, October 19 – Easy Hip-Hop

Annual Conference attendees can experience mind-body balance all three days of Conference: Gentle Yoga on Friday, a Fun Walk/Run on Saturday, and Easy Hip-Hop on Sunday. Check the Conference-at-a-Glance on pages 26 and 27 for starting times. No extra fee to participate!

What To Do in Pasadena

Looking for recommendations on dining, shopping and activity options? Have questions about the Conference or OTAC? Stop by the Hospitality Table in the Conference registration area.

CELEBRATE PHYSICAL DISABILITIES PRACTICE

Come Celebrate the Role of OTs Practicing in Physical Disabilities

This represents our second annual recognition of an occupational therapy practice area. Come join the celebration. This event is open to all Saturday attendees.

Rehabilitation is at the core of occupational therapy and addresses the needs of persons with injuries, illnesses, or deficits in occupational performance due to other causes. (AOTA website, Rehabilitation & Disability).

It is because of this important overall core role of helping our clients improve their functions of the activities of daily living and looking at the whole person that the OTAC 2014 Conference Committee is excited to celebrate the practice of occupational therapy in physical disabilities.

There are many excellent sessions offered. From hands therapy, working with stroke patients and fall prevention to somatosensory, diabetes, chronic pain management, and neurological deficits, you will be able to build a very worthwhile personal conference agenda. In addition to the session topics, we are pleased to be host to so many experienced, knowledgeable, and well-respected presenters who work in the physical disabilities practice area.

Come celebrate the important role of all occupational therapy practitioners!

*Sponsor: USC Division of Occupational Science
& Occupational Therapy*

**“Please join me for the
President's Reception on
Saturday, October 18, 2014
from 5:30pm – 6:30pm
to network, relax after
a day of active learning, and celebrate
our colleagues who practice in physical
disabilities.”**



Patricia Nagaishi,
PhD, OTR/L, OTAC
President

COME HELP CELEBRATE OUR OTAC 2014 AWARD HONOREES

Honoring Those Who Inspire Professional Excellence

Please join us in congratulating your friends and colleagues on their awards as well as expressing your appreciation to them for their contributions to the profession and the Association. These individuals will be recognized at the Awards Ceremony, Friday, October 17, 4:15pm – 5:15pm. This event is open to all Conference attendees registered for Friday.

The following awards will be presented:

Lifetime Achievement Award



Ann Neville-Jan,
PhD, OTR/L, FAOTA

Award of Excellence



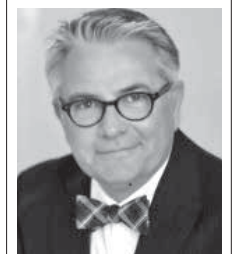
Shawn Phipps,
PhD, MS, OTR/L,
FAOTA

Janice Matsutsuyu Outstanding Service Award



Gayle San Marco,
OTR/L, CDRS

OT Practice Award



Nicolaas
van den Heever,
OTD, BOT, OTR/L

Award of Appreciation



Sarah Bream,
OTD, OTR/L

Fieldwork Educator Award



Diane Mayfield,
EdD, OTR/L

OT Entrepreneur Award



Terri Nishimura,
MA, OTR/L

OTA Honorary Award



Cindy Garcia,
BA, COTA/L

Outstanding Student Award



Samantha Itaya,
BA, OTS

Luella Grangaard Political Action Award



Kyle Yetter,
OT/L

Celebrating Our 32nd Anniversary!

CFOT Awards Lunch and Symposium

Friday, October 17, 2014 • 11:30am – 1:00pm

Pasadena Convention Center

About the Symposium

Recipients of the 2014 CFOT scholarships, research grants, and awards will be announced at the annual CFOT luncheon symposium on Friday, October 17, 11:30am – 1:00pm. Following presentation of the awards, attendees will be treated to a stimulating address by Heather Javaherian-Dysinger, OTD, OTR/L, this year's CFOT honored lecturer and CFOT Humanitarian of the Year.



Roots Down: Occupational Therapy and Domestic Violence (.5 PDU)

Heather Javaherian-Dysinger, OTD, OTR/L, will share the complex journeys of women who have survived domestic violence and the role of occupational therapy within this area. She states, "This has been a journey for me, too, recognizing the need for a multi-faceted approach to provide a catalyst for positive change and health in families who have experienced domestic violence." Along with two colleagues, Javaherian-Dysinger started Roots Down, a non-profit organization serving families who have experienced domestic violence.

Heather Javaherian-Dysinger, OTD, OTR/L CFOT Honored Lecturer and Humanitarian of the Year

The California Foundation for Occupational Therapy (CFOT) is pleased to honor Heather Javaherian-Dysinger, OTD, OTR/L, with its CFOT Humanitarian of the Year Award.

About Heather Javaherian-Dysinger, OTD, OTR/L

Heather Javaherian-Dysinger, OTD, OTR/L, has been practicing in occupational therapy for 18 years. In 2004 she received her doctorate in occupational therapy with a focus in domestic violence from Creighton University. Javaherian-Dysinger is currently an associate professor and program director of the Masters of Occupational Therapy Program at Loma Linda University. Her teaching emphasis involves research, evidence-based practice, education, community program development, and health promotion. She enjoys community practice and supervises Level I and Level II fieldwork students at a domestic violence agency and oversees program development involving various projects in domestic violence, lifestyle and health, and mental health. Javaherian-Dysinger is the research coordinator for the department faculty and facilitates all of the research classes in the master's of occupational therapy curriculum guiding student groups through the IRB process, data collection, analysis, and creation of a professional research poster. She has co-authored a position statement on domestic violence for the American Occupational Therapy Association (AOTA) and was lead author in other peer-reviewed and non-peer reviewed articles. She also currently co-chairs the Domestic Violence Sexual Assault Task Force for Loma Linda University. Recently, Javaherian-Dysinger partnered with two colleagues to open Roots Down, a non-profit serving families who have experienced domestic violence.



Heather Javaherian-Dysinger, OTD, OTR/L,



CFOT SILENT AUCTION

The CFOT booth in the OTAC Exhibit Hall will be buzzing with activity. Your support is encouraged and appreciated both as bidders and as donors of auction items. CFOT annually awards thousands of dollars for scholarships and research grants. Help CFOT meet, and exceed, its goal.

Donations of auction items valued at \$25 or greater are needed. Please contact Diana Su-Erickson at (909) 796-2002 or by email at silentauction@cfot.org.

AOTA President Ginny Stoffel, PhD, OT, BCMH, FAOTA, is delighted to have been the successful bidder for this exquisite coat at the 2013 CFOT Silent Auction.



SPECIAL PROGRAMMING FOR STUDENTS

The OTAC Annual Conference Committee in partnership with the OTAC Student Leadership Committee is pleased to again offer special programming to meet the needs of our student members. **Students receive a discount on Conference registration fees.**

Activities of Interest

■ Thursday, October 16

- Movie Night: The Lookout (Free for conference attendees)
- Meet and Mingle Reception (Free, no-host networking opportunity)

■ Friday, October 17

- Mind-Body Activity: Gentle Yoga
- CFOT Awards Luncheon and Symposium—Student Fee only \$35
- Student Track (Session 28)
- Student Track (Session 38)
- Keynote Address, Michael K. Iwama, PhD, OT(C)
- OTAC Awards Ceremony
- Exhibit Hall Grand Opening Reception—Meet Recruiting Exhibitors and Network with Practitioners
- Alumni/Student Receptions

■ Saturday, October 18

- Mind-Body Activity: Fun Run/Walk
- Student Track (Session 58)
- Exhibit Hall Activities: Poster Presentations, visit more exhibitors/recruiters, play Bingo for cash and prizes, purchase lunch in advance for only \$12
- Student Track (Session 78)
- President's Reception—come celebrate OT in Physical Disabilities
- Scavenger Hunt—ticket: \$15
- After Hours Lounge and Party

■ Sunday, October 19

- Mind-Body Activity: Easy Hip-Hop
- All concurrent sessions on Sunday are open to students at the special student registration fee schedule
- Lunch and OTAC Annual Meeting—*included in Sunday registration fee*

Special
OTAC Student
Registration
Discount

WHAT THE STUDENT REGISTRATION RATE DISCOUNT INCLUDES

The student discounted registration rate discount is applicable for the following schedule:

Friday – Student Track Sessions

Saturday – Student Track Sessions

Sunday – Any Session

Student registration rate discount also includes daily special activities and events (additional fees may apply to some activities and events).

Students may select practitioner sessions on Friday and Saturday at the practitioner registration rate.



AFTER HOURS LOUNGE

Saturday, October 18, 2014
8:30pm – 10:30pm • Hilton Pasadena

Music! Dancing! Networking! Photo Booth! What Fun!
Open to all attendees!

Also featuring a performance by
the dance troupe Limitless



AGENDA: THURSDAY, OCTOBER 16

Thursday – Special Activities

8:00am – 9:30am and Noon – 2:00pm

Registration Hours

These times are just for those attending the Thursday pre-conference sessions.

6:00pm – 8:00pm

Registration Pick-up

Anyone who has registered in advance is welcomed to pick up their registration packet. If you are checking into the Hilton Pasadena on Thursday or if you live in the area and are stopping by to pick up your registration packet in advance, be sure to stay for the no-host Thursday Meet 'n' Mingle Reception and Movie Night.

6:00pm – 8:00pm

A Meet 'n' Mingle Reception

Join us for this informal, no-host reception to kick-start your Conference networking. If you are checking into the hotel on Thursday or live in the area and just stopping by to pick up your registration packet (you must have registered in advance)—come chat with your colleagues.

6:45pm – 9:00pm

B Movie Night: The Lookout (.5 PDU)

Free for Conference attendees

About *The Lookout*: Chris is a once promising high school athlete whose life is turned upside down following a head injury due to a tragic accident made of his own negligence. The accident has left him unable to perform basic everyday functions. As he tries to maintain a normal life, he takes a job as a janitor at a bank, where he ultimately finds himself caught up in a bad situation. Movie reviews characterize this as a stirring crime drama with an exceptionally strong script and equally strong characters. Facilitated discussion to follow. Rated R.

Thursday – Schedule

9:00am – Noon

10 Tools for the Driving Generalist (3 PDUs)

Sandra Okada, MSG, OTR/L, CDRS;
Gayle San Marco, OTR/L, CDRS; Ana Verran, MA, OTR/L

Occupational therapy practitioners must address driving among clients for whom it is a meaningful IADL, yet generalist practitioners may be at a loss as to where to begin. This session presents available tools to facilitate assessment, intervention and referral, and includes an introduction to a “toolkit” that will be made available for the occupational therapy practitioner driving generalist via the OTAC website. Session 14 is a complement to this session.

9:00am – Noon

11 Assistive Technology Practice Today and in the Future (3 PDUs)

Kathleen Shanfield, MS, OTR/L, ATP

This course will cover the evaluation and matching of the individual with the proper equipment to allow access to computers, phones and remote controllers for the home. Current practice and equipment will be presented with hands on applications to real life cases. In addition, future methods of control such as brain computer interface, robotics and wearable technology will be presented with evidence and practical applications.

9:00am – Noon

12 Innovative Design for Engaged Attention & Learning® (3 PDUs)

Zoe Mailloux, OTD, OTR/L, FAOTA

Children spend a large portion of their time in classrooms that tend to offer limited sensory supports. This workshop will present emerging research on environmental designs that can enhance attention and engagement. In addition, strategies for optimizing learning environments and practical solutions to everyday challenges that occur for educators and therapists who interact with and support children will be discussed.

9:00am – Noon; 1:00pm – 4:00pm

13 Training in the Fidelity Measure for Ayres Sensory Integration Intervention (6 PDUs)

L. Diane Parham, PhD, OTR/L (NM), FAOTA

The Fidelity Measure for Ayres Sensory Integration Intervention is a reliable and valid tool for verifying whether intervention is consistent with the underlying philosophy and methods developed by Ayres. Participants will be trained to score the process section of this instrument by observing intervention sessions.

1:00pm – 4:00pm

14 Driving Resources for Generalists (3 PDUs)

Gayle San Marco, OTR/L CDRS; Ana Verran, MA, OTR/L

This session will introduce the attendee to a variety of available resources to facilitate the occupational therapy practitioner driving generalist in the assessment and intervention of relevant driving deficits as well as in the referral to a Driver Rehabilitation Specialist or a Certified Driver Rehabilitation Specialist. Most of these resources are available on-line or via apps on smart phones and tablets. Bring your cellular and Internet enabled smart phones and tablets to this course and explore some of these excellent resources along with us. Session 10 is a complement to this session.

1:00pm – 4:00pm

15 Biomechanical and Motor Control Principles Guiding Feeding Intervention Post-NICU (3 PDUs)

Irene De Aquino Villar, PhD, OTR/L, SWC

Treatment combining biomechanical, motor control, motor learning, and sensory processing principles with the functional occupational performance to promote upper body-neck-head alignment/control and facilitate suck-swallow-breathe coordination needed for infant feeding behavior.

1:00pm – 4:00pm

16 Therapeutic Yoga-based Activities for Children (3 PDUs)

Julie Boterenbrood, MA Ed, MA OT, OTR/L

Occupational therapy practitioner can utilize therapeutic yoga based breathing, positions, and relaxation strategies to facilitate tremendous benefits for children with various special needs and impairments. Plan to learn by doing, so bring a mat and wear comfy clothes!

Note: Be sure to turn in your Certificate of Completion at the Registration table if you will not be attending any other Conference sessions.

AGENDA: FRIDAY, OCTOBER 17

Friday – Special Activities

6:45am – 7:30am

C Mind-Body Activity: Gentle Yoga (No PDUs)

Carlin Daley, OTD, OTR/L

Yoga is a time-tested science of body, mind, and spirit that originated in India several thousand years ago. Yoga creates vitality, strength, flexibility, and ease of movement in the body. Yoga increases lung capacity, calms the mind, and deepens the mind-body connection. Wear comfortable clothing and bring your own mat or towel.

7:30am – 5:00pm

Friday Registration Hours

Pre-registration for Conference is strongly encouraged. Attendance at sessions and events is first-registered, first-served.

11:30am – 1:00pm

CFOT Luncheon, Symposium and Awards (.5 PDU)

Honored Lecturer: Heather Javaherian-Dysinger, OTD, OTR/L

Come help recognize recipients of the 2014 California Foundation of Occupational Therapy (CFOT) scholarships, research grants, and awards including the CFOT Humanitarian of the Year—Heather Javaherian-Dysinger, OTD, OTR/L.

An additional \$50 fee is required to attend this event.

Students can register for \$35.

Note: You may attend this event even if you are not attending any other part of the Conference. Use the Conference Registration Form on page 29 to purchase your ticket.

3:15pm – 4:15pm

40 Keynote Address – Addressing Diversity: Occupational Therapy’s Promise of Cultural Relevance (.5 PDU)

Michael K. Iwama, PhD, OT(C)

Dr. Iwama is an innovative thinker and internationally known champion of culturally relevant occupational therapy. He is one of our profession’s leading theorists, and created the “Kawa River Model,” which has been incorporated into occupational therapy curricula and clinical settings worldwide. Dr. Iwama has doctoral degrees in medical and cultural anthropology, and in sociology; a master’s degree in rehabilitation science and bachelors degrees in occupational therapy and human performance/kinesiology.

Sponsor: West Coast University

4:15pm – 5:15pm

41 OTAC Awards Ceremony

All attendees are invited to help us recognize our 2014 Award honorees who serve with excellence and inspire professional passion. This event is included in your registration fee (if you selected any combination that includes Friday).

5:15pm – 7:15pm

D Exhibit Hall Grand Opening Reception

Located in the Pasadena Convention Center this expo includes a complimentary reception courtesy of our exhibitors. Please visit the exhibitors and express your appreciation. Be sure to play Exhibit Hall Bingo.

7:30pm – 9:30pm

Alumni and Student Receptions

OTAC’s Annual Conference is a convenient—and fun—opportunity to network with your fellow alumni and students. Always a Conference highlight.

Friday – Schedule

6:45am – 7:30am

C Mind-Body Activity: Gentle Yoga

Carlin Daley OTD, OTR/L

Yoga is a time-tested science of body, mind, and spirit that originated in India several thousand years ago. Yoga creates vitality, strength, flexibility, and ease of movement in the body. Yoga increases lung capacity, calms the mind, and deepens the mind-body connection. Wear comfortable clothing and bring your own mat or towel. No PDUs.

7:30am – 5:00pm

Friday Registration Hours

Pre-registration for Conference is strongly encouraged. Attendance at sessions and events is first-registered, first-served.

8:30am – 11:30am

20 Chronic Pain Management: The Role of OT in an Interdisciplinary Team (3 PDUs)

Marisa Moore, MS, OTR/L

The role of OT on an interdisciplinary team working with chronic pain management is examined using the Stanford Comprehensive Interdisciplinary Pain Program as an example. Topics discussed will include goal-setting, sleep hygiene, energy conservation, and relaxation.

8:30am – 11:30am

21 Evidence-based Practice for Dysphagia Intervention (3 PDUs)

Winifred Schultz-Krohn, PhD, OTR/L, BCP, SWC, FAOTA; Jerilyn (Gigi) Smith, PhD, OTR/L, SWC

Evidence-based interventions to address dysphagia will be reviewed with an opportunity to practice select techniques during the seminar. Pediatric, adult, and geriatric case presentations will illustrate the use of evidence-based intervention approaches.

8:30am – 11:30am

22 Zeroing in on Falls (3 PDUs)

Remy Chu, Jr., MHA, OTR/L; Tiffany Lam, OTD, OTR/L

This presentation will illustrate an overview of Rancho Los Amigos National Rehabilitation Center’s interdisciplinary fall prevention program, featuring evidence-based research on falls while incorporating best practice and occupation-based fall prevention strategies for an inpatient rehabilitation facility.

8:30am – 11:30am

23 Protecting the OT Scope of Practice: Hot Topics in the Legislative and Regulatory Arenas (3 PDUs)

Christina A. Metzler; Jennifer Snyder, MPH

Come hear about the most critical federal and state legislative and regulatory issues impacting the authenticity and scope of occupational therapy practice from two of the most influential lobbyists for occupational therapy in the country.

AGENDA: FRIDAY, OCTOBER 17

8:30am – 11:30am

24 Cultural Fluidity: The ‘Becoming’ Necessary for Client-centeredness (3 PDU)

Bonnie Nakasuji, OTD, OTR/L, C/NDT; E. Mariko Yamazaki, OTD, OTR/L; Sophia Lin Magana, OTD, OTR/L

The metaphor of fluidity using international examples better describes the necessary dynamic ‘becoming’ process toward cultural competency. This presentation will include small group problem solving of cultural dilemmas that underscore and help practitioners approach client-centeredness.

8:30am – 11:30am

25 The Application of CCSS to School-based Practice (3 PDU)

Julie B. Kornbluth, MA, OTR/L; Jean Jackson, MA, CCC-SLP

California has adopted Common Core State Standards (CCSS) for standards-based education. Through formal presentation, discussions, and group activities participants will review CCSS, understand how to link the Individualized Education Program to curricula, effectively collaborate with IEP teams, and discuss intervention techniques.

8:30am – 11:30am

26 Self-regulation and Executive Functions – Definition and Practical Strategies (3 PDU)

Joselynn Jaques, MSc, S-LP (CCC)

Self-regulation and executive functioning in autistic children and other occupational therapy disorders impacts their ability to benefit from intervention. Self-regulation programs and the latest research on these programs will be presented along with practical strategies and video examples.

8:30am – 11:30am

27 Mandated Abuse and Neglect Reporting: An OT’s Role and Responsibility (3 PDU)

Diana Su-Erickson, OTR/L; San Bernardino County Children and Family Services LCSW

The session will present the reporting requirements and procedures in California for mandated abuse and neglect reporters; and possible indicators of child, elder, and dependent abuse and neglect.

8:30am – 11:30am

28 STUDENT TRACK – NO PDUs

8:30am – 9:20am

Occupational Therapy Treatment Activities for Children Across a Variety of Settings

Stacey M. Lopez, OTD, MA, OTR/L

This presentation provides creative and engaging treatment ideas for occupational therapists to use with children in early intervention, school-based, and clinic settings. A review of occupational therapists’ role within each setting will be provided. Treatment activities will address fine motor skills, visual motor and visual perceptual skills, sensory processing skills, self-help and adaptive skills.

9:30am – 10:20am

Stress Management Techniques for New Practitioners

Myka Winder, OTD, OTR/L

Stress management is a key intervention component in multiple settings. This session will provide first-hand experience in managing stress for new practitioners that will translate to the ability to use these strategies with clients.

STUDENT TRACK – NO PDUs (Continued)

10:30am – 11:20am

Executive Functioning: How to Capture Higher-level Cognitive Barriers

Jessica Kersey, MS, OTR/L; Jennifer Weaver, MA, OTR/L

Difficulty with one’s executive functioning can occur throughout all ages. Executive functioning allows us to use our past experiences to shape our ability to perform present action. It allows us to stay organized and plan our day. Some older adults have challenges in this area after going through an acquired brain injury. This presentation will focus on functional assessments and interventions to address skills for executive functioning.

11:30am – 1:00pm

CFOT Luncheon, Symposium and Awards (.5 PDU)

Honored Lecturer: Heather Javaherian-Dysinger, OTD, OTR/L

Come help recognize recipients of the 2014 California Foundation of Occupational Therapy (CFOT) scholarships, research grants, and awards including the CFOT Humanitarian of the Year—Heather Javaherian-Dysinger, OTD, OTR/L.

An additional \$50 fee is required to attend this event. Student Rate \$35.

Note: You may attend this event even if you are not attending any other part of the Conference. Use the Conference Registration Form on page 29 to purchase your ticket.

1:00pm – 2:00pm

30 Pressure Ulcer Prevention Program for Veterans with SCI (1 PDU)

Alison Cogan, MA, OTR/L; Jesus Diaz, OTD, OTR/L; Jana LaMarca, OTD, OTR/L; Erna Imperatore Blanche, PhD, OTR/L, FAOTA

This course will describe the implementation of a Pressure Ulcer Prevention Program, modeled on the Lifestyle Redesign® intervention approach, for veterans with spinal cord injuries using a telehealth platform.

1:00pm – 3:00pm

31 Telehealth Technologies for Health and Wellness Services (2 PDU)

Tammy Richmond, MS, OTR/L, FAOTA

This session will highlight different clinical applications and models of care utilizing various telehealth technologies within the practice area of health and wellness services, including demonstration of apps, videoconferencing, and web portals.

1:00pm – 3:00pm

32 Maternal-child Co-occupation within a Domestic Violence Shelter (2 PDU)

Jessica De Brun, OTD, MOT, OTR/L

This presentation will explore the perceptions of mother survivors of domestic violence regarding the effects of violence on their young child’s development. Additionally early-interventionists’ role with this population within the confines of a shelter will be discussed.

1:00pm – 3:00pm

33 NBCOT®: Serving the Public Interest (2 PDU)

Patricia Heeter, MA, OTR, CHT

The mission of the National Board for Certification in Occupational Therapy (NBCOT) is to serve the public interest by advancing client care and professional practice through evidence-based certification standards and the validation of knowledge essential for effective practice in occupational therapy. This presentation is a prime opportunity to learn about NBCOT’s public, entities that accredit NBCOT, importance of certification, NBCOT certification verification processes, certification examinations and related study tools, benefits of the NBCOT certification renewal program, and NBCOT’s responsibility for promoting standards of professional conduct.

AGENDA: FRIDAY, OCTOBER 17

1:00pm – 3:00pm

34 Is What We SAY What We DO? Public Perceptions, Occupational Therapy Literature, and Current Practice Put in Perspective (2 PDUs)

Nicolaas van den Heever, OTD, BOT, OTR/L

Billions of people turn to the Internet to research information. The same could apply to obtaining information about the scope of occupational therapy. What results are obtained regarding the function of the profession? Is there a match between these results and how occupational therapy services are executed?

1:00pm – 3:00pm

35 Role of School Occupational Therapy in Assistive Technology Intervention (2 PDUs)

Bryan Saavedra, OTR/L; Ronna Joseph, OTR/L

This session will offer guidelines to help determine the role of occupational therapy in assistive technology (AT) both in assessment and ongoing intervention. Attendees will also learn to explore motor access as well as about utilizing AT for children to access the Unique Learning System.

1:00pm – 3:00pm

36 The Assessment of Play in Middle Childhood (2 PDUs)

Ann E. McDonald, PhD, OTR/L

Reliable and valid measures are needed to address not only the occupation of play in middle childhood (7-11 years) but also to assist with documentation of treatment effectiveness and progress toward occupational therapy goals.

1:00pm – 3:00pm

37 Clinical Experiences Providing Pediatric Mental Health to Latinos (2 PDUs)

Celso Delgado, Jr., OTD, OTR/L; Elizabeth Carley, OTD, OTR/L; Jazminne Orozco, OTD, OTR/L

Practitioners will share clinical experiences providing pediatric mental health services to Latino families. Clinical stories with cultural snapshots working with this vibrant and rising population will be highlighted. Emerging themes and existing research will be discussed.

1:00pm – 3:00pm

38 STUDENT TRACK – NO PDUs

Essentials for TBI: Interprofessional Teams and Creating a Holding Community

Samia H. Rafeedie, OTD, OTR/L, CBIS

Medical care for individuals recovering from brain injury requires an interprofessional team approach. Each healthcare provider, caregiver, and family member is responsible for creating a “holding community” as an essential component of the recovery and rehabilitation process.

2:00pm – 3:00pm

39 Strategies Guiding Clinical Reasoning in Orthopedic Acute Care (1 PDU)

Alisha Ciolfi, MSOT, OTR/L; Nicole Walter, MSOT, OTR/L

Utilizing concepts from the OT Practice Framework leads to the development of clinical reasoning guidelines designed to improve efficiency, assist with decision making, and promote appropriate occupation based intervention in the acute orthopedic population.

EXHIBIT HALL ACTIVITIES

Pasadena Convention Center

Just steps away from the Conference sessions.

Friday, October 17 • 5:15pm – 7:15pm

Saturday, October 18 • 11:30am – 2:30pm

Join our Exhibitors and Sponsors in the Exhibit Hall to:

- learn about **new products and services**
- meet with **exhibiting recruiters**
- be eligible for **give-aways**
- play **Bingo** for cash prizes
- enjoy the **Grand Opening Reception**—Friday (5:15pm - 7:15pm)
- meet **awardees on Friday**
- **earn PDUs** by viewing posters—Saturday
- grab a quick **lunch** (\$12 advanced purchase)—Saturday
- chat with **OTAC and AOTA leaders**
- bid on **CFOT auction items**
- learn about your **professional association**

3:15pm – 4:15pm

40 Keynote Address – Addressing Diversity: Occupational Therapy’s Promise of Cultural Relevance (.5 PDU)

Michael K. Iwama, PhD, OT(C)

Dr. Iwama is an innovative thinker and internationally known champion of culturally relevant occupational therapy. He is one of our profession’s leading theorists, and created the “Kawa River Model,” which has been incorporated into occupational therapy curricula and clinical settings worldwide. Dr. Iwama has doctoral degrees in medical and cultural anthropology, and in sociology; a master’s degree in rehabilitation science; and bachelors degrees in occupational therapy and human performance/kinesiology.

Sponsor: West Coast University

4:15pm – 5:15pm

41 OTAC Awards Ceremony—All Attend

All attendees are invited to help us recognize our 2014 Award honorees who serve with excellence and inspire professional passion. This event is included in your registration fee (if you selected any combination that includes Friday).

5:15pm – 7:15pm

D Exhibit Hall Grand Opening Reception—All Attend!

Located in the Pasadena Convention Center, this expo includes a complimentary reception courtesy of our exhibitors. Please visit the exhibitors and express your appreciation. Be sure to play Exhibit Hall Bingo.

5:15pm

Friday Registration Closes

Be sure to turn in your Certificate of Completion at the OTAC Registration Counter IF you won’t be returning to the Conference on Saturday or Sunday.

7:30pm – 9:30pm

Alumni and Student Receptions

OTAC’s Annual Conference is a convenient—and fun—opportunity to network with your fellow alumni and students. Always a Conference highlight.

AGENDA: SATURDAY, OCTOBER 18

Saturday – Special Activities

6:45am – 7:45am

- E Mind-Body Activity: Fun Run/Walk (No PDUs)**
Join Maytal Shvartz, OTD, OTR/L, for this fun run and/or walk around Pasadena.

7:30am – 5:00pm

Saturday Registration Hours

Pre-registration for Conference is strongly encouraged. Attendance at sessions and events is first-registered, first-served.

11:30am – 2:30pm

- F Exhibit Hall Hours**
Only three hours for all these activities! Grab a quick 'to go' lunch (separate advanced purchase required—only \$12) in the Exhibit Hall, visit exhibitors you didn't see on Friday evening (be sure to play Exhibit Hall Bingo/must be present to win), view the posters for PDUs, and more!

5:30pm – 6:30pm

- G President's Reception**
All Conference attendees are cordially invited to join us for the President's Reception where we will celebrate the work of OT/OTAs in physical disabilities. Cash bar.

Sponsor: USC Division of Occupational Science & Occupational Therapy

6:30pm – 8:30pm

Scavenger Hunt

Everyone will be assigned to a team and the winner will receive a fun prize. **One person in your group must have a smart phone.** Ticket: \$15 (includes a bite to eat and beverage)

8:30pm – 10:30pm

H After Hours Lounge and Party

Join us for good times and good friends. Music, dancing, photo booth! Cash bar. Experience a performance by the dance troupe Limitless.

Saturday – Schedule

6:45am – 7:45am

- E Mind-Body Activity: Fun Run/Walk (No PDUs)**
Join Maytal Shvartz, OTD, OTR/L, for this fun run and/or walk around Pasadena.

7:30am – 5:00pm

Pre-registration for Conference is strongly encouraged. Attendance at sessions and events is first-registered, first-served.

8:30am – 10:00am

50 Therapeutic Use of Patient Handling Equipment During ADLs (1.5 PDUs)

Cindy Jaeger, OTR, SWC

Assembly Bill 1136 requires the use of safe patient handling equipment in acute care. This will be a discussion of how to utilize safety equipment in occupational therapy treatment, and how to model safe behavior for other staff.

8:30am – 10:00am

51 Making Healthy Choices: Self-management Patient Education Module for Stroke Survivors (1.5 PDUs)

Dana Patikamanant, MA, OTR/L; Barbara Brewer, COTA/L; Monica Godínez, MA, OTR/L; Stephanie Yang, MA, OTR/L

This presentation will provide a step-by-step process in developing a self-management approach for patient education with regards to nutrition and healthy eating post-stroke. The Making Healthy Choices education module is an integrated education class that incorporates didactic and hands-on practice to allow patients to fully understand and carry over learned education concepts to his or her daily routine.

8:30am – 10:00am

52 Sensory Processing in Toddlers Diagnosed with ASD (1.5 PDUs)

Juliana Gutiérrez, MA, OTR/L, SWC; Megan Chang, PhD, OTR/L; Janet S. Gunter, OTD, OTR/L; Erna Imperatore Blanche, PhD, OTR/L, FAOTA

This presentation focuses on the early signs of sensory processing deficits of children 19 to 36 months later diagnosed with Autism Spectrum Disorder (ASD) when compared to typically and developmentally delayed children.

8:30am – 10:30am

53 Family Relationships: Impact on Feeding Goal Progress (2 PDUs)

Julie Miller, MOT, OTR/L, SWC; Patricia Novak, MPH, RD, CLC; E. Mariko Yamazaki, OTD, OTR/L

Using the Developmental, Individual, Relationship-based (DIR®) Model framework, this presentation will help practitioners consider relationships within the context of family mealtime routines and how relationships impact a child's participation and success in feeding occupations.

8:30am – 10:30am

54 Managing Chronic Pain within the OT Practice Framework (2 PDUs)

Guy L. McCormack, PhD, OTR/L, FAOTA

As the population grows older and the incidence of chronic conditions increases, the symptoms of pain become a barrier to participation in everyday activities. Many practitioners are not prepared to manage chronic pain syndromes.

8:30am – 11:30am

55 Capturing Positive Outcomes with Terminally Ill Clients (3 PDUs)

Janice Kishi Chow, MA, OTR/L

This course will describe how clinicians can capture positive treatment outcomes with terminally ill clients using client-centered outcome measures - the Occupational Circumstances Assessment and Interview Rating Scale (OCAIRS) and Goal Attainment Scaling (GAS).

8:30am – 11:30am

56 Advancing Quality and Value in OT to Achieve the Triple Aim (3 PDUs)

Shawn Phipps, PhD, MS, OTR/L, FAOTA; Amy Lamb, OTD, OTR/L, FAOTA; Natalie Leland, PhD, OTR/L, FAOTA; Pamela Roberts, PhD, MSHA, SCFES, CPHQ, FAOTA

This workshop will provide participants with the skills to engage in quality improvement and to demonstrate occupational therapy's distinct value in achieving the Triple Aim of Healthcare Reform by improving quality, patient experience, and cost effectiveness.

AGENDA: SATURDAY, OCTOBER 18

8:30am – 11:30am; 2:30pm – 5:30pm

57 Foundations of NMES for Individuals with Neurological Deficits (6 PDUs)

Remy Chu, Jr., MHA, OTR/L; Suzanne Lai, OTD, OTR/L

This session will review the existing literature on the efficacy of neuromuscular electrical stimulation (NMES) followed by case discussions. Video case studies of clients participating in occupational therapy will be analyzed through group interactive discussions.

8:30am – 11:30am

58 STUDENT TRACK – NO PDUs

8:30am – 10:20am

Forget Theory; Focus on Function

Tonya Cooley, OTR/L; Karen Dobyms, MOT, OTR/L

Concrete therapeutic activities can be used to target fine and visual motor skills in a pediatric setting. The activities are creative, easily graded, affordable, quick, easy, fun, and motivating.

10:30am – 11:20am

The Role of Occupational Therapy and Community-based Mental Health

Jessica Richman, OTD, OTR/L; Sarah Hui, OTD, OTR/L

Presenters will provide an introduction by explaining the scope of practice of mental health occupational therapy practitioners. Presenters will then provide experiences working in a community-based mental health organization in the greater Los Angeles area. Their scopes of practice will be incorporated, including client demographics, interventions, and interdisciplinary experiences.

10:00am – 11:30am

60 Self-management Intervention for Patients with Heart Failure (1.5 PDUs)

Amber Bennett, MA, OTR/L, OTD (cand.); Whitney Pike, OTR/L, CLT; Phuong Nguyen, OTD, OTR/L, CLT

The elements of a self-management program based on Lifestyle Redesign® for inpatients with heart failure are discussed, and attendees will have the opportunity to experience a simulated “Self-Care Boot Camp.”

10:00am - 11:30am

61 Adapted Yoga for the Stroke Population (1.5 PDUs)

Tiffany Lam, OTD, OTR/L

Yoga is a popular and health-promoting occupation. In this presentation, participants will learn how to adapt yoga for the needs of patients with stroke to provide extensive motor retraining and reach activities of daily living (ADL) goals.

10:00am – 11:30am

62 Effectiveness of a Sensory Rich Early Intervention Program (1.5 PDUs)

Erna Imperatore Blanche, PhD, OTR/L, FAOTA; Janet S. Gunter, OTD, OTR/L; Megan Chang, PhD, OTR/L

This presentation focuses on the description of the interdisciplinary manualized early intervention program for 18 to 36 month old children which embeds sensory strategies and yields results in the motor, language, and cognitive areas.

10:30am – 11:30am

63 Healthy Kids: Maintaining Healthy Weight in Pediatric Clients with Special Healthcare Needs (1 PDU)

Karen Park, OTD, OTR/L, SWC, CLE

This presentation explores the occupational impact on families and children with special healthcare needs who struggle with managing healthy weight. Strategies and programs to manage weight with children with underlying feeding disorders or selective feeding behaviors will be discussed utilizing a family centered, interdisciplinary approach.

10:30am – 11:30am

64 Integrating Occupational Therapy into AYA Oncology Care (1 PDU)

Caryn Roach, MA, OTR/L

The adolescent and young adult (AYA) oncology population presents with unique challenges. This session will identify the needs of this population and discuss how they can be addressed through integration of occupational therapy into oncological care.

11:30am – 2:30pm

F Exhibit Hall Open—All Attend!

Only three hours for all these activities! Grab a quick ‘to go’ lunch (separate advanced purchase required—only \$12) in the Exhibit Hall, visit exhibitors you didn’t see on Friday evening (be sure to play Exhibit Hall Bingo/must be present to win), view the posters for PDUs, and more!

2:30pm – 5:30pm

70 Using the COPM to Emphasize Occupation in Hand Therapy (3 PDUs)

Lisa Deshaies, OTR/L, CHT; Michele Berro, MA, OTR/L

This session is aimed at helping therapists reflect on their professional focus and empower them to promote and practice authentic occupation-based therapy in hand settings using the Canadian Occupational Performance Measure (COPM) as a cornerstone for treatment and outcomes.

2:30pm – 5:30pm

71 Components and Comparison of Community-based Fall Prevention Programs (3 PDUs)

Deborah J. Bolding, PhD, OTR/L, FAOTA; Tricia Catigay, OTR/L

Fall risks for older adults will be examined and individual assessment and treatment will be compared to community-based fall programs (using Matter of Balance and Stepping On examples). Effective communication with clients about this often sensitive topic will be discussed.

2:30pm – 5:30pm

72 How to Use the iPad to Meet Occupation-centered Goals (3 PDUs)

Heather Thomas, PhD, OTR/L

This workshop will lead participants through ways the iPad can be used as both a rehabilitation tool and to promote independence in daily occupations. Using the OT Practice Framework as a guide, participants will be shown how to use the iPad with different intervention types, approaches, and outcomes. Participants are encouraged to bring their iPads.

2:30pm – 5:30pm

73 Psychosocial Fieldwork Students in the Skilled Nursing Environment (3 PDUs)

Gina Tucker-Roghi, MHS, OTR/L; Jane Dressler, JD, OTR/L

A partnership between Ensign Services and Dominican University, using Allen’s Cognitive Disabilities Model and Level II Psychosocial students, has yielded an innovative program that richly serves clients, and has increased the knowledge of clinicians and students.

2:30pm – 5:30pm

74 Promoting EBP in OT: Sustaining Professional Cultural Change (3 PDUs)

Tracey Airth-Edblom, OTD, OTR/L, CHT

This presentation provides the participant with a prospective study design, reliable and valid evidence-based practice (EBP) measurement tools, and a business-based cultural change modeled program to enable any OT practice setting to transition to evidence-based practice.

AGENDA: SATURDAY, OCTOBER 18

2:30pm – 5:30pm

75 Tools for Effective Patient Care in the Acute Hospital Setting (3 PDU)

Lisa Hiestand, MS, OTR/L; Stephanie Kokesh, OTD, OTR/L; David Leary, PhD, OTR/L

The dynamic health care environment demands increased efficiency with effective outcomes. OT foundational skills provide the creativity, reasoning, and problem-solving abilities for OT service provision to consumers, while remaining grounded in occupation based practice.

2:30pm – 5:30pm

76 Multi-tiered Intervention Program for Students with Significant Disabilities (3 PDU)

Jean Pacifico-Banta, OTD, OTR/L; Chelsea Armstrong, MS, OTR/L; Lisbeth Vega, OTD, OTR/L

A.C.E.S. is a multi-level intervention model for children with moderate to severe disabilities in the school and home. Learn how to address the school environment, curriculum, teacher, and parent needs based on best practices.

2:30pm – 5:30pm

77 STUDENT TRACK – NO PDUs

2:30pm – 3:20pm

Coaching Students on the Autism Spectrum

Laura Mah, OTAS

The Sacramento City College OTA Program provides a unique Level I Fieldwork experience through a partnership with the college's Disability Services and Programs for Students program. As educational coaches, OTAs guide students on the autism spectrum during their transition to college.

3:25pm – 4:15pm

Client-centered Therapy: How to Achieve Effective Outcomes in Treatment Without the Perfect Intervention

Alexis Sobel, MS, OTR/L

This session will include discussion and strategies to addressing fears in entering practice or unfamiliar territory, finding balance between direct patient care and additional responsibilities (e.g., documentation, supervising), and how to bring the holistic approach to any setting or personal interest, while keeping assessment and treatment intervention client-centered.

4:20pm – 5:30pm

How to Turn Household Items into Fine Motor Treatment Tools

Christie Kiley, MA, OTR/L

Pediatric occupational therapy practitioners working with diverse caseloads are constantly looking for ways to expand their reserve of treatment supplies while staying on a budget. Sometimes all you have to do is look around your own house—from plastic salsa containers to peanut butter jars to empty boxes of baby wipes and more—they all can be used to promote fine motor skills! And the best part is that they are free! Come learn how to upcycle household items into treatment tools you can use in pediatric therapy to promote the development of fine motor skills.

5:30pm

Saturday Registration Closes

Be sure to turn in your Certificate of Completion at the OTAC Registration Counter IF you won't be returning to the Conference on Sunday.

5:45pm – 6:30pm

G President's Reception—All Attend!

All Conference attendees are cordially invited to join us for the President's Reception where we will celebrate the work of OT/OTAs in physical disabilities practice. Cash bar.

Sponsor: USC Division of Occupational Science & Occupational Therapy

6:30pm – 8:30pm

Scavenger Hunt—Come Explore Pasadena!

Do you want to see and learn more about Pasadena in a fun way? Join us for our 4th Annual Scavenger Hunt. You can meet new colleagues, experience local sites, and relax after a long day of sessions. Gather a group of friends and explore. Everyone will be assigned to a team and the winner will receive a fun prize. **One person in your group must have a smart phone.** Ticket: \$15 (includes a bite to eat and beverage)

8:30pm – 10:30pm

H After Hours Lounge and Party—All Attend!

Join us for good times and good friends. Music, dancing, photo booth! Cash bar. Experience a performance by the dance troupe Limitless.



Follow the
Annual
Conference
on our free
mobile app.
Coming Soon!

AGENDA: SUNDAY, OCTOBER 19

Sunday – Special Activities

6:45am – 7:30am

I Mind-Body Activity: Easy Hip-Hop (No PDUs)

Tricia Gomez

Start your morning with easy hip-hop! It's exhilarating, and easy-to-follow. NO DANCE EXPERIENCE NECESSARY. ALL FITNESS LEVELS WELCOME. Wear comfortable clothing for moving, and a fitness shoe.

7:30am – 4:30pm

Sunday Registration Hours

Pre-registration for Conference is strongly encouraged. Attendance at sessions and events is first-registered, first-served.

11:30am – 1:00pm

J Lunch and OTAC Annual Meeting

This event is included in your registration fee (if you selected any combination that includes Sunday). Come hear inspirational presentations about the future of OTAC and occupational therapy in California by OTAC President Patricia S. Nagaishi, PhD, OTR/L, as well as reports from other leaders. Featured presenter is Shawn Phipps, PhD, MS, OTR/L, FAOTA.

Sponsor: West Coast University

Sunday – Schedule

6:45am – 7:30am

I Mind-Body Activity: Easy Hip-Hop (No PDUs)

Tricia Gomez

Start your morning with easy hip-hop! It's exhilarating, and easy-to-follow. NO DANCE EXPERIENCE NECESSARY. ALL FITNESS LEVELS WELCOME. Wear comfortable clothing for moving, and a fitness shoe.

7:30am – 4:30pm

Sunday Registration Hours

Pre-registration for Conference is strongly encouraged. Attendance at sessions and events is first-registered, first-served.

8:30am – 10:00am

80 SNF Low Vision Patients—A Tool Kit (1.5 PDUs)

Sabrena McCarley, MBA-SL, OTR/L; Daniel Swiatek, OTR/L

This session will facilitate the understanding of low vision patient identification, evaluation, facility and caregiver education as well as treatment strategies and approaches to assist with successful transition planning for the skilled nursing patient.

8:30am - 10:00am

81 Occupational Therapy and Somatic Experiencing®—Understanding How Trauma Shows up in Our Clients (1.5 PDUs)

Aimee Levine-Dickman, MA, OTR/L, SEP

Somatic Experiencing®—a sensory-based approach—is a valuable tool when helping people reconstruct their lives. It has shown effectiveness with veterans, survivors of rape and natural disasters, people traumatized by auto accidents and chronic pain; even infants following traumatic births.

8:30am – 11:30am

82 Adults, Autism, and Sensory Processing Disorder: Reflective Testimonials (3 PDUs)

Bonnie Nakasuji, OTD, OTR/L, C/NDT; Briana Harris, MA, OTR/L; Bill Wong, OTD, OTR/L

Testimonials by adults with sensory processing difficulties and/or a diagnosis of Autism Spectrum Disorder will share their struggles with anxiety and what strategies work for them, when they work best, and the role of occupational therapy.

8:30am – 11:30am

83 The New OT Practice Framework: Uses in Everyday Practice (3 PDUs)

Heather Thomas, PhD, OTR/L

The changes in the third edition of the OT Practice Framework, recently released by AOTA, reflect the dynamic and exciting changes emerging in our profession. This course presents those changes as well as guides participants through the Framework and how it can be used in practice.

8:30am – 11:30am

84 Common Pediatric Congenital Hand Differences (3 PDUs)

Ginny Gibson OTD, OTR/L, CHT

Evaluation of and intervention for children with more common congenital hand differences will be discussed including camptodactyly, syndactyly, trigger thumb, and radial aplasia. Evidence for the use of orthotics will be reviewed, as well as orthotic design.

8:30am – 11:30am

85 Contemporary Perspectives on Supervision for Community Mental Health Practice (3 PDUs)

Deborah B. Pitts, PhD, OTR/L, BCMH, CPRP; Tessa Milman, OTD, OTR/L

This session will consider contemporary perspectives on supervision for the community mental health practice context, including reflective supervision and the psychoanalytic renaissance in occupational therapy as it informs supervisory practices, in addition to 'recovery-oriented' supervision.

8:30am – 11:30am

86 Emerging Healthcare Trends: OT's Role in Lifestyle Management (3 PDUs)

Chantelle Rice, CDE, OTD, OTR/L; Ashley Uyeshiro, OTD, OTR/L; Myka Winder, OTD, OTR/L

This session will detail the principles of lifestyle management interventions and how they are applied to specific populations. Case studies and sample documentation will be reviewed.

8:30am – 11:30am

87 Early Brain Development, Long Lasting Effects of Chronic Stress, and Bridging the Gaps Across Disciplines: An Introduction to the Neurorelational Framework (NRF) (3 PDUs)

Connie Lillas, RN, MFT, PhD

This session examines occupational therapy and mental health, and bridging the gaps across disciplines using the newly developed neurorelational framework (NRF) to facilitate young children's brain development and reduce the corrosive effects of chronic stress.

Using videos and Powerpoint, the presenters will discuss cases they collaborated on using transdisciplinary and interdisciplinary models of practice. The NRF will be used to organize your thinking about brain systems and the positive effect of treatment to ameliorate chronic stress patterns and strengthen the family system.

AGENDA: SUNDAY, OCTOBER 19

8:30am – 11:30am; 1:30pm – 4:30pm

88 Effective Documentation for Occupational Therapy Practice Today (6 PDU)

Katie Jordan, OTD, OTR/L

Effective documentation and coding is crucial to prevent denials, defend and expand scope of practice. Current and upcoming significant changes in healthcare will directly impact the clinical reasoning, documentation, and reimbursement of practitioners.

10:00am – 11:30am

89 A Lifestyle Redesign® Approach to Diabetes Management (1.5 PDU)

Stephanie Yang, MA, OTR/L, PAM

This presentation allows participants to apply the Lifestyle Redesign® approach to clients with physical disabilities and chronic conditions such as diabetes in order to improve their quality of life.

10:00am – 11:30am

90 Occupational Therapy in End of Life Care (1.5 PDU)

Heather Javaherian-Dysinger, OTD, OTR/L

Occupational therapy has a unique role in end of life care. Occupational therapy practitioners can facilitate quality of life and participation in meaningful activity through our skills in adaptation, legacy building, and adaptive equipment.

11:30am – 1:00pm

J Lunch and OTAC Annual Meeting (.5 PDU)

This event is included in your registration fee (if you selected any combination that includes Sunday). Come hear inspirational presentations about the future of OTAC and occupational therapy in California by OTAC President Patricia S. Nagaishi, PhD, OTR/L, as well as reports from other leaders.

Featured presenter is Shawn Phipps, PhD, MS, OTR/L, FAOTA, Director, American Occupational Therapy Association Board of Directors, and Chief Quality Officer & Associate Hospital Administrator, Rancho Los Amigos National Rehabilitation Center. His presentation, OTAC and AOTA: A Collaborative Effort Elevating the Power of OT, will include critical updates on AOTA's strategic priorities leading up to the Centennial Vision, a national perspective on California's role in the Affordable Care Act and the national OT landscape, and how embracing quality and patient-centered care can elevate the power of OT.

Sponsor: West Coast University

1:30pm – 3:00pm

91 Important Tips for Establishing Your Own Company or Business (1.5 PDU)

Babak Amali, OTR/L

If you have ever thought about forming your own business or company but you don't know how or where to start, this course will provide you with the basic information and will walk you through the process. This course is a complement to Session 98 on social media.

1:30pm – 4:30pm

92 Overview OT Laws and Regulations and OT Alphabet Soup (3 PDU)

Heather Kitching, OTD, OTR/L; Elizabeth Gomes, MS, OTR/L

The first part of this session will provide an overview of the most important professional acronyms that you should be aware of and understand what their role is in your profession and career. From OTAC, AOTA, CBOT, ACOTE, NBCOT to OTR/L, OTD, PAM and more, these presenters will take the mystery out of the OT alphabet soup. The second part of this session will focus on some of the laws and regulations affecting the practice of occupational therapy.

1:30pm – 4:30pm

93 Children in Foster Care and Occupational Justice (3 PDU)

Arezou Salamat, OTD, MOT, OTR/L

The impact of maltreatment on children's health and well-being in the foster care system will be discussed. Children in foster care often experience living in chaos, and lack healthy attachment with their caregiver, which leads to difficulty with self-regulation and occupational deprivation.

1:30pm – 4:30pm

94 Like a River: Meeting the Challenge of Diversity in Occupational Therapy (3 PDU)

Michael K. Iwama, PhD, OT(C)

Clinicians / practitioners will learn about the latest developments in this internationally recognized model of practice, the "Kawa River Model," that heralds an important shift in the discourses of theory and culture in occupational therapy. The presenter will challenge how you think about occupational therapy and matters of culture as well as how you can effectively address the challenges of delivering occupational therapy to an increasingly diverse population. Dr. Iwama, is also the Conference Keynote Presenter. Although his Keynote Address will also touch on the "Kawa River Model," this session will provide a much more in-depth look on the topic.

1:30pm – 4:30pm

95 Productivity Issues and the Fieldwork Student (3 PDU)

Diane Mayfield, EdD, OTR/L; Melissa Jazmines-Broersma, MS, OTR/L

Clinicians express commitment and dedication to the profession by taking fieldwork students. However, productivity issues make taking the fieldwork student extremely challenging. Strategies are presented to alleviate the stress, turning this into a win-win for everyone.

1:30pm – 4:30pm

96 Sensory Strategies in the Schools: Data Driven Intervention (3 PDU)

Lisa Test, OTD, OTR/L; Kelly Bloom, MA, OTR/L; Jennifer Sato, MA, OTR/L

This will be a dynamic presentation providing a brief overview of Ayres Sensory Integration (SI) versus sensory strategies. Video and case analysis will be used to guide decision making and inform intervention and data collection.

1:30pm – 4:30pm

97 Picky Eating: Skill-based, Sensory-based, Gut-based? (3 PDU)

Judith Freeman, OTR/L

There are many reasons why children might be picky eaters, including poor oral motor skills, abnormal sensory processing, and gastrointestinal disorders. This presentation will identify factors contributing to picky eating and provide suggestions for treatment.

1:30pm – 4:30pm

99 Sharpening Your Skills: Increasing Efficacy in Intervention for Children with Autism (3 PDU)

Zoe Mailloux, OTD, OTR/L, FAOTA

This workshop will include an overview of the evidence for occupational therapy intervention with children with autism, followed by an interactive session involving cases that participants bring from their own practices. Using a structured approach to analyzing assessment data for intervention planning, attendees will be able to increase the rationale for and focus of their intervention for cases they bring to the presentation. Special instructions will be sent to registrants prior to the session.

3:00pm – 4:30pm

98 Social Media for Occupational Therapy—Take 2 (1.5 PDU)

Bill Wong, OTD, OTR/L

Social media has become an increasingly popular professional development and networking tool. It is vital for today's occupational therapy students and practitioners to learn these latest trends for occupational therapy practice. This course is a complement to Session 91 on starting your own business.

PRESENTERS BY NAME

Tracey Airth-Edblom, OTD, OTR/L, CHT	18	Joselyne Jaques, MSc, S-LP (CCC)	15	Dana Patikamanant, MA, OTR/L	17
Babak Amali, OTR/L	21	Heather Javaherian-Dysinger, OTD, OTR/L	11, 14, 15, 21	Shawn Phipps, PhD, MS, OTR/L, FAOTA	17, 20, 21
Chelsea Armstrong, MS, OTR/L	19	Melissa Jazmines-Broersma, MS, OTR/L	21	Whitney Pike, OTR/L, CLT	18
Amber Bennett, MA, OTR/L, OTD (cand.)	18	Katie Jordan, OTD, OTR/L	21	Deborah B. Pitts, PhD, OTR/L, BCMH, CPRP	20
Michele Berro, MA, OTR/L	18	Ronna Joseph, OTR/L	16	Samia H. Rafeedie, OTD, OTR/L, CBIS	16
Erna Imperatore Blanche, PhD, OTR/L, FAOTA	15, 17, 18	Jessica Kersey, MS, OTR/L	15	Chantelle Rice, CDE, OTD, OTR/L	20
Kelly Bloom, MA, OTR/L	21	Christie Kiley, MA, OTR/L	19	Jessica Richman, OTD, OTR/L	18
Deborah J. Bolding, PhD, OTR/L, FAOTA	18	Heather Kitching, OTD, OTR/L	21	Tammy Richmond, MS, OTR/L, FAOTA	15
Julie Boterenbrood, MA Ed, MA OT, OTR/L ...	13	Stephanie Kokesh, OTD, OTR/L	19	Caryn Roach, MA, OTR/L	18
Barbara Brewer, COTA/L	17	Julie B. Kornbluth, MA, OTR/L	15	Pamela Roberts, PhD, MSHA, SCFES, CPHQ, FAOTA	17
Elizabeth Carley, OTD, OTR/L	16	Suzanne Lai, OTD, OTR/L	18	Bryan Saavedra, OTR/L	16
Tricia Catiggay, OTR/L	18	Tiffany Lam, OTD, OTR/L	18	Arezou Salamat, OTD, MOT, OTR/L	21
Megan Chang, PhD, OTR/L	17, 18	Jana LaMarca, OTD, OTR/L	15	Gayle San Marco, OTR/L, CDRS	13
Janice Kishi Chow, MA, OTR/L	17	Amy Lamb, OTD, OTR/L, FAOTA	17	Jennifer Sato, MA, OTR/L	21
Remy Chu, Jr., MHA, OTR/L	14, 18	David Leary, PhD, OTR/L	19	Winifred Schultz-Krohn, PhD, OTR/L, BCP, SWC, FAOTA	14
Alisha Ciolfi, MSOT, OTR/L	16	Natalie Leland, PhD, OTR/L, FAOTA	17	Kathleen Shanfield, MS, OTR/L, ATP	13
Alison Cogan, MA, OTR/L	15	Aimee Levine-Dickman, MA, OTR/L, SEP	20	Maytal Shvartz, OTD, OTR/L	17
Tonya Cooley, OTR/L	18	Connie Lillas, RN, MFT, PhD	20	Jerilyn (Gigi) Smith, PhD, OTR/L, SWC	14
Carlin Daley, OTD, OTR/L	14, 20	Stacey M. Lopez, OTD, MA, OTR/L	15	Jennifer Snyder, MPH	14
Irene De Aquinio Villar, PhD, OTR/L, SWC	13	Sophia Lin Magana, OTD, OTR/L	15	Alexis Sobel, MS, OTR/L	19
Jessica De Brun, OTD, MOT, OTR/L	15	Laura Mah, OTAS	19	Diana Su-Erickson, OTR/L	15
Celso Delgado, Jr., OTD, OTR/L	16	Zoe Mailloux, OTD, OTR/L, FAOTA	13, 21	Daniel Swiatek, OTR/L	20
Lisa Deshaies, OTR/L, CHT	18	Heather Martin	21	Lisa Test, OTD, OTR/L	21
Jesus Diaz, OTD, OTR/L	15	Diane Mayfield, EdD, OTR/L	21	Heather Thomas, PhD, OTR/L	18, 20
Karen Dobyms, MOT, OTR/L	18	Sabrena McCarley, MBA-SL, OTR/L	20	Gina Tucker-Roghi, MHS, OTR/L	18
Jane Dressler, JD, OTR/L	18	Guy L. McCormack, PhD, OTR/L, FAOTA	17	Ashley Uyeshiro, OTD, OTR/L	20
Judith Freeman, OTR/L	21	Ann E. McDonald, PhD, OTR/L	16	Nicolaas van den Heever, OTD, BOT, OTR/L ..	16
Ginny Gibson, OTD, OTR/L, CHT	20	Christina A. Metzler	14	Lisbeth Vega, OTD, OTR/L	19
Monica Godínez, MA, OTR/L	17	Julie Miller, MOT, OTR/L, SWC	17	Ana Verran, MA, OTR/L	13
Elizabeth Gomes, MS, OTR/L	21	Tessa Milman, OTD, OTR/L	20	Nicole Walter, MSOT, OTR/L	16
Tricia Gomez	20	Marisa Moore, MS, OTR/L	14	Jennifer Weaver, MA, OTR/L	15
Janet S. Gunter, OTD, OTR/L	17, 18	Bonnie Nakasuji, OTD, OTR/L, C/NDT	15, 20	Myka Winder, OTD, OTR/L	15, 20
Juliana Gutiérrez, MA, OTR/L, SWC	17	Phuong Nguyen, OTD, OTR/L, CLT	18	Bill Wong, OTD, OTR/L	20, 21
Briana Harris, MA, OTR/L	20	Patricia Novak, MPH, RD, CLC	17	E. Mariko Yamazaki, OTD, OTR/L	15, 17
Patricia Heeter, MA, OTR, CHT	15	Sandra Okada, MSG, OTR/L, CDRS	13	Stephanie Yang, MA, OTR/L, PAM	17, 21
Lisa Hiestand, MS, OTR/L	19	Jazminne Orozco, OTD, OTR/L	16		
Sarah Hui, OTD, OTR/L	18	Jean Pacifico-Banta, OTD, OTR/L	19		
Michael K. Iwama, PhD, OT(C)	14, 16, 21	L. Diane Parham, PhD, OTR/L (NM), FAOTA	13		
Jean Jackson, MA, CCC-SLP	15	Karen Park, OTD, OTR/L, SWC, CLE	18		
Cindy Jaeger, OTR, SWC	17				

ONLINE LEARNING—24/7

OTAC MEMBERS-ONLY BENEFIT

\$99
unlimited access



- Access to all courses offered — including more than 80 OT-related courses; new courses added annually
- Courses by professional experts; evidence-based
- Dynamic Learning Online, Inc. is an AOTA Approved Provider
- Access anywhere you have wi-fi
- \$99 annual fee — this deep discount is available only to OTAC members ... just one course could save you hundreds of dollars



Sign up today!

... on the OTAC home page www.otaconline.org

myotlicense—easy. one stop. professional. info. tracking.



It's Arrived!

Why? Never miss your OT/OTA license renewal date or misplace a PDU certificate or forget to renew your professional memberships.

What? A web-based, easy-to-use, 'electronic filing cabinet' and professional management tool to help OT/OTA practitioners track professional information. **FREE** with regular OTAC membership. Or, sign up as a program subscriber.

How? Go to www.otaconline.org. Click on the myotlicense SUBSCRIBE button. You will now be in the OTAC Online Store—myotlicense subscriber page. Make your purchase. You will receive a receipt confirmation via email.

Questions? Leave a message on the myotlicense help desk at (855) 927-7737 or send a message to myotlicense@otaconline.org or check out the FAQs on the OTAC website www.otaconline.org.



myotlicense

The use of member/licensee photos in the OTAC publications does not constitute an endorsement of products or services by the member/licensee

A web-based, easy-to-use, 'electronic filing cabinet' and professional management tool to help OT practitioners track professional information.

Never miss an important deadline or opportunity!

POSTER PRESENTATIONS

Two groups. Poster presentations may be viewed on Saturday, October 18, 2014. Group A: 11:30am – 12:30pm and Group B: 1:30pm – 2:30pm in the Exhibit Hall. To earn PDUs, **have the poster presenter(s) initial the Certificate of Completion form.** You will earn .25 PDUs for each poster with a maximum allowed of 2 PDUs for the full two-hour poster session.

A Case Study of the Abilities Care Approach

Gina Tucker-Roghi, MHS, OTR/L

"A Matter of Balance" Program for Older Adults

Kitsum Li, OTD, OTR/L; Adrienne Angeles, OTS; Leslie Hollaway, OTS; Tiffany Lau, OTS; Victoria Reyes, OTS

Assessing Validity of the Preschool Kitchen Task Assessment

Emily Veith Fry, OTS; Hayley Gilligan, OTS; Liza Henty-Clark, OTS; Jennifer Weissensee, OTS

The Bridge/Adapt Program:

A Systematic Cognitive Rehabilitation Curriculum

Kitsum Li, OTD, OTR/L; Amy Bennett, OTS; Julie Bergen, OTS; Abigail Lafrenz, OTS; Natalie Repin, OTS

DiversOT: Supporting Diversity in OT Through Mentorship

Alyssa Concha, OTS; Brenda Covarrubias, OTS; Carlos Cruz, OTS; Jesus Diaz, OTD, OTR/L; Michelle Medina, OTD, OTR/L

Driving Stress and Occupational Limitations Among

OIF/OEF Returnees

Eric J. Hwang, PhD, OTR/L; Claudia G. Peyton, PhD, OTR/L, FAOTA; David K. Kim, MS, OTR/L; Kristine K. Nakama-Sato, MS, OTR/L; Amy E. Noble, MS, OTR/L

Establishing Conditioned Place Preference in

Typically Developing Children

Barbara Thompson, PhD; Kelsey Helgesen, OTS; Leah Hiller, OTS; Sandy Takata, OTS

Every Minute Counts: Diabetes Management in Primary Care

Karen Duddy, MHA, OTR/L, OTD (Cand 2015); Jana LaMarca, OTD, OTR/L; Kristin Pressler, MA, OTR/L

The Evolving Role of OT in a Pediatric MDA Clinic

Janis Kitsuwu-Lowe, MA, OTR/L

The Fall Risk Evaluation Tool (FRET)

Kitsum Li, OTD, OTR/L; Mikaela Conlon, OTS; Irene Leung, OTS; Desiree Shaver, OTS; Melanie Shea, OTS

Family, Food, Fun: A Recipe for Wellness

Denise Wong Calizar, MA, OTR/L

First-Generation Peer Mentors Experiences

Stacy Frauwirth, MS, OTR/L; Jessica Taylor, OTS; Tiffany Torres, OTS; Cindelle Leyson, OTS

Fundamentals of Vision Rehabilitation

Suzanne Lai, OTD, OTR/L

Goal Attainment Scaling to Measure Sensory Integration Goals

Winifred Schultz-Krohn, PhD, OTR/L, BCP, SWC, FAOTA; Julia Doolittle, BS, OTS; Kathleen Matthews, BS, OTS

Helping Individuals with Disabilities Incorporate Healthier Lifestyle Habits

Michal S. Atkins, MA, OTR/L, PAM, HTC; Alison M. Cogan, MA, OTR/L; Allison Chu, OTD, OTR/L, PAM; Priscilla Park, OTD, OTR/L

Inclusion of Superficial Physical Agents in California OT Curriculum

Donna Breger Stanton, OTD, OTR/L, CHT, FAOTA; Ivonne Calle, MOTs; Catherine Cooper, MOTs; Lara Leventhal, MOTs; Irlanea Luna, MOTs; Brent Rohrbach, MOTs

Interprofessional Collaboration Between Occupational Therapists and Registered Nurses

Dr. Eira Klich-Heartt, DNP, CNS, CNL; Ruth Ramsey, EdD, OTR/L; Bethany Loy, OTS; Holly Mischeff, OTS; Kelly Nguyen, OTS; Vince O'Brien, OTS

Lifestyle Redesign® for Young Adults with ADHD: Providing Occupational Therapy Support Services in Higher Education

Carlin Daley, OTD, OTR/L

Making Group Therapy Meaningful for Transition Age Youth

Jessica Richman, OTD, OTR/L

The Meaning of Leisure Pursuits to Homeless Mothers

Winifred Schultz-Krohn, PhD, OTR/L, BCP, SWC, FAOTA; Lea Endo, BS, OTS; Christine Louthan, BS, OTS; Wendy Nicklaus, BS, OTS

Neurofeedback: A Virtual Context Intervention for Children with Autism

Guy L. McCormack, PhD, OTR/L, FAOTA; Robyn Araujo, MOTs; Veronica Ortega, MOTs; Maggie Tatevosyan, MOTs; Michael Tsujimoto, MOTs

Occupational Therapy and Integrative Holistic Medicine: A Pilot Program

Michele Berro, MA, OTR/L; Michelle Young, OTD, OTR/L

Participants' Perceptions of Factors in Preventing Falls

Kitsum Li, OTD, OTR/L; Rajvinder Bains, OTS; Jaclyn Fok, OTS; Nadine Marcelo, OTS; Tamara Vileshina, OTS

PediApp Finder: A Mobile Application Database of Pediatric Apps

Julia Wilbarger, PhD, OTR/L; Adrienne LeBlanc, MSOT; Sara Pro, MSOT; April Wastjutin, MSOT; Robert Williams, MSOT

Pediatric Feeding: Skills, Competency and Function

Lisa Ann Olsen, OTD, OTR/L

POSTER PRESENTATIONS

Remediating Symptoms of Chemo Brain through Occupational Therapy

Guy L. McCormack, PhD, OTR/L, FAOTA; Takuma Kishimoto, MOTS; Constance Baker-Cohn, MOTS; Christine Van Gorkum MOTS

Sensory Integration Intervention Effects on Core Autism Behaviors

Erna Imperatore Blanche, PhD, OTR/L, FAOTA; Barbara Thompson, PhD; Gabriela Galaz, OTS; Elizabeth Franco OTS

Sensory Integration Treatment: Effects on Autism Spectrum Disorder

Erna Imperatore Blanche, PhD, OTR/L, FAOTA; Alexandra Alger OTS; Gabriela Galaz Lacoa, OTS; Clara Zambruno, OTS

Standardized Patients in Occupational Therapy Education

Andrea Battle, OTS; Jessica Borceguin, OTS; Joanna Dizon, OTS; Lai Zan Saechao, OTS

Taking Control: Facilitating Self-Management for SCI Patients

Jennifer Bashar, MS, OTR/L; Ina Gomez, MA, OTR/L; Tiffany Yoshida, CTRS, RT I

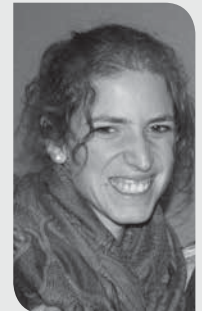
Therapeutic Listening and Bilateral Coordination in Typically Developing Children

Julia Wilbarger, PhD, OTR/L; Shanee Ben-Haim, OTS; Cassie DeBonis, OTS; Jane Schwartz, OTS; Amy Smith-Schwartz, OTS

Therapists' Perceptions of Cultural Competency

Julie B. Kornbluth, MA, OTR/L

THE MANY FACES OF PAST OTAC ANNUAL CONFERENCES



**GET YOUR CENTENNIAL FLOAT
COMMEMORATIVE PIN!**

Help OT become widely recognized and globally connected.

Make a donation of \$25 or more and receive the commemorative pin.



CONFERENCE-AT-A-GLANCE

Thursday, October 16, 2014

Registration – Check-In Hours for Thursday, Pre-Conference Sessions
8:00am – 9:30am and noon – 2:00pm – Hilton Pasadena

9:00am	10 Tools for the Driving Generalist (3 PDUs)	11 Assistive Technology Practice Today and in the Future (3 PDUs)	12 Innovative Design for Engaged Attention & Learning® (3 PDUs)	13 Training in the Fidelity Measure for Ayres Sensory Integration Intervention (6 PDUs)
Noon	Lunch on Own			
1:00pm – 4:00pm	14 Driving Resources for Generalists (3 PDUs)	15 Biomechanical and Motor Control Principles Guiding Feeding Intervention Post-NICU (3 PDUs)	16 Therapeutic Yoga-based Activities for Children (3 PDUs)	13 cont. Training in the Fidelity Measure for Ayres Sensory Integration Intervention (6 PDUs)
6:00pm – 8:00pm	A – Meet 'n' Mingle; and Check-In for Attendees Registered in Advance			
6:45pm – 9:00pm	B – Movie Night: The Lookout (Rated R with facilitated discussion) - (.5 PDU)			

Friday, October 17, 2014

6:45am	C – Mind-Body Activity: Gentle Yoga – Hilton Pasadena								
7:30am	Friday Registration (7:30am – 5:00pm) – Pasadena Convention Center								
8:30am	20 Chronic Pain Management: The Role of OT in an Interdisciplinary Team (3 PDUs)	21 Evidence-based Practice for Dysphagia Intervention (3 PDUs)	22 Zeroing in on Falls (3 PDUs)	23 Protecting the OT Scope of Practice: Hot Topics in the Legislative and Regulatory Arenas (3 PDUs)	24 Cultural Fluidity: The 'Becoming' Necessary for Client- centeredness (3 PDUs)	25 The Application of CCSS to School- based Practice (3 PDUs)	26 Self-regulation and Executive Functions – Definition and Practical Strategies (3 PDUs)	27 Mandated Abuse and Neglect Reporting (3 PDUs)	28 STUDENT TRACK (NO PDUs)
11:30am	CFOT Luncheon, Symposium and Awards – Separate Ticket Required – \$50 (.5 PDU) (Students – \$35)								
1:00pm	30 Pressure Ulcer Prevention (1 PDU)	31 Telehealth Technologies for Health and Wellness Services (2 PDUs)	32 Maternal-child Co-occupation within a Domestic Violence Shelter (2 PDUs)	33 NBCOT®: Serving the Public Interest (2 PDUs)	34 Is What We SAY What We DO? Public Perceptions, Occupational Therapy Literature,... (2 PDUs)	35 Role of School Occupational Therapy in Assistive Technology Intervention (2 PDUs)	36 The Assessment of Play in Middle Childhood (2 PDUs)	37 Clinical Experiences Providing Pediatric Mental Health to Latinos (2 PDUs)	38 STUDENT TRACK (NO PDUs)
2:00pm	39 Strategies Guiding Clinical Reasoning in Orthopedic Acute Care (1 PDU)								
3:00pm	All Proceed to the Keynote Address								
3:15pm	40 – Keynote Address: Michael K. Iwama, PhD, OT(C) – All Attend – (.5 PDU)								
4:15pm	41 – OTAC Awards Ceremony – All Attend								
5:15pm	D – Exhibit Hall Grand Opening Reception – Pasadena Convention Center – All Attend								
7:30pm	Alumni and Student Reception – Hilton Pasadena								

Saturday, October 18, 2014

6:45am	E – Mind-Body Activity: Fun Run/Walk – Hilton Pasadena								
7:30am	Saturday Registration (7:30am – 5:00pm) – Pasadena Convention Center								
8:30am	50 Therapeutic Use of Patient Handling Equipment During ADLs (1.5 PDUs)	51 Making Healthy Choices: Self-management Patient Education Module for Stroke Survivors (1.5 PDUs)	52 Sensory Processing in Toddlers Diagnosed with ASD (1.5 PDUs)	53 Family Relationships: Impact on Feeding Goal Progress (2 PDUs)	54 Managing Chronic Pain within the OT Practice Framework (2 PDUs)	55 Capturing Positive Outcomes with Terminally Ill Clients (3 PDUs)	56 Advancing Quality and Value in OT to Achieve the Triple Aim (3 PDUs)	57 Foundations of NMES for Individuals with Neurological Deficits (6 PDUs)	58 STUDENT TRACK (NO PDUs)
10:00am	60 Self-management Intervention for Patients with Heart Failure (1.5 PDUs)	61 Adapted Yoga for the Stroke Population (1.5 PDUs)	62 Effectiveness of a Sensory Rich Early Intervention Program (1.5 PDUs)	63 Healthy Kids: Maintaining Healthy Weight in Pediatric Clients with Special Healthcare Needs (1 PDU)	64 Integrating Occupational Therapy into AYA Oncology Care (1 PDU)				
10:30am									
11:30am	F–Exhibit Hall and Poster Session – Pasadena Convention Center – All Attend								
2:30pm	70 Using the COPM to Emphasize Occupation in Hand Therapy (3 PDUs)	71 Components and Comparison of Community-based Fall Prevention Programs (3 PDUs)	72 How to Use the iPad to Meet Occupation-centered Goals (3 PDUs)	73 Psychosocial Fieldwork Students in the Skilled Nursing Environment (3 PDUs)	74 Promoting EBP in OT: Sustaining Professional Cultural Change (3 PDUs)	75 Tools for Effective Patient Care in the Acute Hospital Setting (3 PDUs)	76 Multi-tiered Intervention Program for Students with Significant Disabilities (3 PDUs)	57 cont. Foundations of NMES for Individuals with Neurological Deficits (6 PDUs)	77 STUDENT TRACK (NO PDUs)
5:30pm	G – President’s Reception – Come celebrate the work of OT/OTAs in physical disability – All Attend – Hilton Pasadena								
6:30pm	Scavenger Hunt – Ticket \$15 – Hilton Pasadena								
8:30pm	H – After Hours Lounge and Party – Hilton Pasadena – All Attend								

Sunday, October 19, 2014

6:45am	I – Mind-Body Activity: Easy Hip-Hop – Hilton Pasadena								
7:30am	Sunday Registration (7:30am – 4:30pm) – Pasadena Convention Center								
8:30am	80 SNF Low Vision Patients-A Tool Kit (1.5 PDUs)	81 Occupational Therapy and Somatic Experiencing® (1.5 PDUs)	82 Adults, Autism, and Sensory Processing Disorder: Reflective Testimonials (3 PDUs)	83 The New OT Practice Framework: Uses in Everyday Practice (3 PDUs)	84 Effective Developmental Hand Therapy for School Function Success (3 PDUs)	85 Contemporary Perspectives on Supervision for Community Mental Health Practice (3 PDUs)	86 Emerging Healthcare Trends: OT’s Role in Lifestyle Management (3 PDUs)	87 Early Brain Development, Long Lasting Effects of Chronic Stress (6 PDUs)	88 Effective Documentation for Occupational Therapy Practice Today (6 PDUs)
10:00am	89 A Lifestyle Redesign™ Approach to Diabetes Management (1.5 PDUs)	90 Occupational Therapy in End of Life Care (1.5 PDUs)							
11:30am	J – Lunch and OTAC Annual Meeting – Pasadena Convention Center – (.5 PDU)								
1:30pm	91 Important Tips for Establishing Your Own Company or Business (1.5 PDUs)	92 Update on Important OT Laws and Regulations (3 PDUs)	93 Children in Foster Care and Occupational Justice (3 PDUs)	94 Like a River: Meeting the Challenge of Diversity in Occupational Therapy (3 PDUs)	95 Productivity Issues and the Fieldwork Student (3 PDUs)	96 Sensory Strategies in the Schools: Data Driven Intervention (3 PDUs)	97 Picky Eating: Skill-based, Sensory-based, Gut-based? (3 PDUs)	87 cont. Early Brain Development, Long Lasting Effects of Chronic Stress (6 PDUs)	88 cont. Effective Documentation for Occupational Therapy Practice Today (6 PDUs)
3:00pm	98 Social Media For Occupational Therapy- Take 2 (1.5 PDUs)								
4:30pm	Conference Concludes: Sunday Registration Closes at 5:00pm – Be sure to submit your Certificate of Completion (white copy)								

CONFERENCE REGISTRATION FORM INSTRUCTIONS

(form on page 29)

See page 4 for
Deadlines to
Remember

- 1. Registrant:** Please print or type all data.
(Online registration is available on the OTAC website at www.otaonline.org through October 3, 2014 at 8:59pm.)
- 2. Program Selection:** Every session and activity has a number or letter. Circle the number/letter of each session/activity you will attend. Attendance is limited by seating or by speaker's request. **Registration forms will NOT be accepted if you select overlapping sessions.**
- 3. Registration Fee:** First, locate your professional status (OT/OTA, Student, Retired) and then select the combination of days you will attend, and circle the appropriate Registration Fee amount that applies to your professional status and combination of days. Additional fees may apply.
- 4. Summary Selection:**
 - You must check all boxes that apply or your registration is not complete.
 - Workplace Colleague Special Discount: See section below on this page for policy/criteria.
 - Special Meal Needs: You must pre-register by October 3, 2014 or we may not be able to accommodate you.
 - Special Needs: You must pre-register by October 3, 2014.
 - Special Events (SE): These events must be prepaid. There most likely will be no 'at-the-door' availability. Seating is limited.
 - Refund Policy: A refund, less \$75 administrative fee, will be issued if written notice of cancellation is received by the OTAC Office postmarked on or before October 3, 2014. No refunds after that date. Refunds may not be processed until after Conference.
- 5. Deadlines:** See page 4 for Deadlines to Remember.

CONFERENCE ATTENDEE AGREEMENTS/DISCLAIMERS

Attention

By registering for or attending any event or activity associated with the Occupational Therapy Association of California's (OTAC) 38th Annual Conference, I agree to the following:

Professional Development/Information Disclaimer

OTAC's 38th Annual Conference is sponsored by the Occupational Therapy Association of California for professional development, networking, and OTAC business purposes. The material presented is not intended to represent the only or the best methods appropriate for the occupational therapy and/or medical condition or professional development issues being discussed, but rather is intended to present the opinions of the presenters, which may be helpful to other health care professionals at arriving at their own conclusions and consequent application. Attendees participating in this professional development education program do so with full knowledge that they waive any claim they may have against OTAC and its staff or representatives for reliance on any information presented during these educational activities.

Public Relations Agreement

Registration and attendance at, or participation in, OTAC meetings and other activities constitutes an agreement by the registrant for OTAC's use and distribution (both now and in the future) of the registrant or attendee's image or voice in photographs, videotapes, electronic/print reproductions, and audio tapes of such events and activities.

Waiver of Liability Agreement

I release the Occupational Therapy Association of California, its staff, elected officials, presenters, and any other individuals or entities associated with OTAC's 38th Annual Conference from any and all liability connected with my participation, as well as from any liability related to changes to the schedule, events or activities. I acknowledge and agree that I am participating on my own choice and assume all risk in connection thereof, and that in the event that a need for emergency medical service arises, I authorize and consent to such services being provided at my own expense.

WORKPLACE COLLEAGUE DISCOUNT

Don't get enough time to visit with those in your workplace? Want a way to save money together? You can travel together and room together, you can also save together. All individual registration forms, full payment, and membership applications (if applicable) must be submitted together by October 3, 2014.

Discount policies

- Three or more OTAC members from the same **physical** workplace address can receive a 10% discount when pre-registering for conference together. Minimum of three registrants required.
- You cannot register online to receive this discount. Registration forms must be **submitted together** by fax, email attachment, or by mail.
- Discount available to OTAC members only; however, a nonmember can submit a membership application along with the registration forms to qualify for discount.
- This is a pre-registration special only. Special ends October 3, 2014.
- Discount applies only to the Registration Fee for Friday, Saturday and/or Sunday. Discount does not apply to any other fees including speaker/material fees/costs, special event fees including meals, and pre-conference sessions.
- No refunds given if number of colleagues registered together drops below three; however, new workplace colleagues may be substituted for previous registrants at any time (OTAC membership required).
- Student and Retired OTAC members already receive a discounted rate and do not qualify for this discount.
- Conference registrants receiving any other registration discount do not qualify for this discount.

CONFERENCE REGISTRATION FORM

See page 4 for deadlines and increases to Early Bird Registration Rates!



1. REGISTRANT: (Please print or type)

OTAC Customer Number _____

First Name _____ Middle Initial _____ Last Name _____

Home Address _____

Home City/State/Zip _____

Phone Home (_____) _____ Work (_____) _____ Cell (_____) _____

Fax (_____) _____ Email _____

Who to contact in case of an emergency: (Name and cell phone) _____

2. PROGRAM SELECTION: (Circle) the sessions/activities you will attend. Sessions/activities are included in registration for the corresponding day.

You may not register for overlapping sessions.

	THU			FRI								SAT								SUN													
AM Additional fees required for Thursday	10	11	12	13	20	21	22	23	24	25	26	27	28	50	51	52	53	54	55	56	57	58	80	81	82	83	84	85	86	87	88		
					30	31	32	33	34	35	36	37	38	60	61	62	63	64					78	79	89	90							
PM Additional fees required for Thursday	14	15	16		39									70	71	72	73	74	75	76					91	92	93	94	95	96	97		
ACTIVITIES	A B			40	41	C D								E F G H								I J											

3. REGISTRATION FEE: (Circle) the combination of days you are attending in order to be registered. Enter amount on Registration Fee below.

FEES INCREASE \$60 SEPTEMBER 4, 2014	FRI./SAT./SUN.	FRI. ONLY	FRI./SAT.	FRI./SUN.	SAT. ONLY	SAT./SUN.	SUN. ONLY
OT/OTA	\$309	\$139	\$259	\$279	\$139	\$279	\$169
OTS (Student-MOT or OTA)	\$149	\$49	\$89	\$109	\$49	\$109	\$89
RETIRED (no PDUs)	\$209	\$109	\$169	\$169	\$109	\$169	\$119
ADD-ON: NON-OTAC MEMBER FEE/NEW MEMBER DUES	Add \$130 to the fees above. Nonmember Students (MOT/OTA) add \$50. This fee qualifies you for a 1-year membership if you have not been a member since 7/2012. Submit a membership application.						

4. SUMMARY SECTION: Fill in and check all boxes that apply or your registration form is not complete and may be subject to additional fees.

<input type="checkbox"/> Registration Fee (from section 3 above) \$ _____	<input type="checkbox"/> WORKPLACE COLLEAGUE DISCOUNT: Employer _____
<input type="checkbox"/> Workplace Colleague Special Discount (Subtract 10%) \$(_____) _____	Employer Address _____
<input type="checkbox"/> Non-OTAC Member Fee \$130 (May Include Membership) \$ _____	
<input type="checkbox"/> Non-OTAC Student Member Fee \$50 (May Include Membership) \$ _____	
<input type="checkbox"/> Session 10 (Members \$39/Nonmembers \$69) \$ _____	
<input type="checkbox"/> Session 11 (Members \$39/Nonmembers \$69) \$ _____	
<input type="checkbox"/> Session 12 (Members \$39/Nonmembers \$69) \$ _____	
<input type="checkbox"/> Session 13 (Members \$69/Nonmembers \$99) \$ _____	
<input type="checkbox"/> Session 14 (Members \$39/Nonmembers \$69) \$ _____	
<input type="checkbox"/> Session 15 (Members \$39/Nonmembers \$69) \$ _____	
<input type="checkbox"/> Session 16 (Members \$39/Nonmembers \$69) \$ _____	
<input type="checkbox"/> SE: Friday CFOT Symposium/Lunch _____ @ \$50ea. \$ _____	<input type="checkbox"/> SPECIAL MEAL AND NEED REQUESTS: Must register by October 3. Attach description of requests.
<input type="checkbox"/> SE: Friday CFOT Symposium/Lunch _____ @ \$35ea. STUDENTS \$ _____	
<input type="checkbox"/> SE: Saturday Exhibit Hall Lunch _____ @ \$12ea. \$ _____	
<input type="checkbox"/> SE: Saturday Scavenger Hunt _____ @ \$15ea. \$ _____	
<input type="checkbox"/> SE: Sunday Luncheon: Extra Ticket _____ @ \$35ea. \$ _____	
<input type="checkbox"/> Fri/Sat Exhibit Hall Only: Member \$0/Nonmember \$25 \$ _____	
<input type="checkbox"/> Centennial Float Donation \$ _____	
<input type="checkbox"/> \$10 <input type="checkbox"/> \$25 <input type="checkbox"/> \$50 <input type="checkbox"/> Other \$ _____ \$ _____	
<input type="checkbox"/> Registration received between 9/4/14 – 10/3/14 – \$60 (Add) \$ _____	
<input type="checkbox"/> Registration received after 10/3/14 onsite – \$90 (Add) \$ _____	
TOTAL (Send check or use credit card) \$ _____	

*No refunds after October 3, 2014.
 *Beginning October 4, 2014, registration will only be accepted "on-site" at the Pasadena Convention Center and the fee increases \$90.
 *Cancellation Fee: \$75.
 Must cancel by October 3, 2014.

Registration will increase \$90 on 10/4/14 and will only be available on-site.

Questions?
By Phone: (916) 567-7000 or (888) 686-3225
By Email: staff@otaconline.org

5. PAYMENT INFORMATION

AMEX MasterCard Visa Check # _____ (Payable to OTAC)

Card Number _____ VCode* _____

Name of Cardholder _____ Exp. Date _____

Card Billing Address _____

City _____ State _____ Zip _____

Signature _____

*The VCode is a 3 or 4 digit number on the back of your card following your card number (front of AMEX card).

6. SUBMIT REGISTRATION

Fax (916) 932-1974
 Mail OTAC, PO Box 276567
 Sacramento, CA 95827-6567
 Online www.otaconline.org

7. KEEP A COPY FOR YOUR RECORDS

EXHIBITORS

Friday, October 17, 5:15pm to 7:15pm and Saturday, October 18, 11:30am to 2:30pm
Pasadena Convention Center, Exhibit Hall

COMPANY NAMES

Achieve Beyond Pediatric Therapy & Autism Services
Aegis Therapies
AlphaVista Services, Inc.
Aureus Medical Group
Brighton Rehabilitation
Brookdale Senior Living
Burger Rehabilitation
Casa Colina
California Foundation for Occupational Therapy (CFOT)
CSU Dominguez Hills- Masters Occupational Therapy
Dance-In-a-Box
Dignity Health
Discount School Supply
Dynatronics
EBS Healthcare
Enloe Medical Center
Ensign Services
Every Child Achieves & Wellness Works
Hallmark Rehabilitation
Handwriting Without Tears
HCR ManorCare
Interactive Metronome
Kaiser Permanente
Kawah Delta Health Care District
Lantz Medical, Inc.
Learn It
Long Beach Memorial Medical Center/Miller Children's Hospital Long Beach

BLUE RIBBON SPONSORS

Casa Colina
Dignity Health
EBS Healthcare
ONR, Inc. - Orthopaedic & Neurological Rehabilitation
MyTherapyCompany
San Jose State University
Stanbridge College
USC Division of Occupational Science & Occupational Therapy

COMPANY NAMES

Mariner Healthcare
Mission Healthcare
MyTherapyCompany
North Coast Medical
North Coast Rehab, Inc.
ONR, Inc. - Orthopaedic & Neurological Rehabilitation
Optelec & ShopLowVision.com
Occupational Therapy Association of California (OTAC)
OTAC Awardees
Preferred Healthcare
Progressus Therapy
Providence Speech and Hearing Center
Rehab Without Walls
RehabCare
San Jose State University
School Steps, Inc.
Sharp HealthCare
Stanbridge College
Sunny Days of California, Inc.
Systems Technology, Inc.
Therapists Unlimited
Therapy Specialists
Total Education Solutions
UCLA Health
USC Division of Occupational Science & Occupational Therapy
University of St. Augustine
University of Utah
Virco
WalkJoy
West Coast University

PRINT ADVERTISERS

Dignity Health
EBS Healthcare
MyTherapyCompany
Preferred Healthcare
Sharp HealthCare
USC Division of Occupational Science & Occupational Therapy



800-578-7906
hr@ebshealthcare.com
www.ebshealthcare.com



800-579-9970
hr@ebsunited.com
www.ebsunited.com

Visit EBS at booth #100 during the 2014 OTAC Conference in Pasadena, CA from October 17th-18th - We hope to see you there!



OCCUPATIONAL THERAPY POSITIONS AVAILABLE IN YOUR AREA AND NATIONWIDE

MORE PLACES TO DISCOVER YOUR CAREER

Choose a setting (school, home, clinic, community)
Explore locations (local, national, international)
Embrace your role (entry-level, supervisor, consultant)

MORE CHOICES TO REACH YOUR POTENTIAL

Extensive training (CEUs, professional partnerships)
Ongoing mentorship (widespread network of support)
Professional growth (connect with certified specialists)

MORE OPPORTUNITIES TO EXPERIENCE SUCCESS

Expand your boundaries (immersion/outreach programs)
Become a leader (mentor, speaker, clinical researcher)
Achieve your unique goals (ask how EBS can help you)

Join the EBS team today and turn your career into a successful and rewarding journey while making a difference in lives you touch!



Stop by our booth #302!

PRESORTED
FIRST CLASS
U.S. POSTAGE
PAID
PERMIT NO. 316
SACRAMENTO, CA

Why You Should Join the MTC Team!

- OT **Mentors** for new grads
- Strong **Clinical Leadership**
- **Approved** CA Professional Development Provider
- Licensure **Reimbursement**
- **CEU Courses FREE to YOU!**
- Awesome **Benefit** Packages!
- **Wellness Programs** & allowance
- MTC is founded by the former Owner/President of Progressus Therapy, Inc., & Medical Resources
- **25+ years Experience in School-Based Therapy**



Contact us today!

866-447-6916

careers@myTherapyCompany.com

www.myTherapyCompany.com

IN PURSUIT OF THE VISION

DIVERSITY IN OCCUPATIONAL THERAPY

38TH ANNUAL CONFERENCE
OCTOBER 16-19, 2014 • PASADENA

