

2018 OTAC ANNUAL CONFERENCE & EXPO

October 25-28, 2018 | Pasadena, CA

CONFERENCE
REGISTRATION
BROCHURE

BUILDING
OT CAPACITY



LET'S TWEET! @OTACnews #OTACCONF2018 #buildingOTcapacity

OTAC
Occupational Therapy Association of California

OTA | The American
State Affiliate | Occupational Therapy
Association, Inc.

OCTOBER 25
PRE-CONFERENCE INSTITUTE

HILTON PASADENA &
PASADENA CONVENTION
CENTER

Share your **PASSION**. We'll give you the **CAREER OF A LIFETIME!**

EBS IS A PROUD HOST OF THE 2018 OTAC KNOWLEDGE BOWL! **Booth #119**



12+ years average
employee tenure



30+ years as the pediatric
therapy leader



2.1 Million children
served each year



AOTA Approved Provider
of CEU courses



Opportunities in 50 states,
including Alaska and Hawaii



EBS is the difference between just having a job and having a career you love!

We understand the value of exceptional Occupational Therapists and will support you every step of the way. That's why we don't just offer you a job - we work with you to build your career. It's a career with the right kind of mentorship, training, and support to help you grow, whether you are a new graduate or a seasoned professional. A career with EBS allows you to become a part of our leading network of clinicians providing superior services to the pediatric population. **Join the EBS team of Occupational Therapists today!**

CONFERENCE OVERVIEW

THURSDAY, OCTOBER 25

All Thursday activities are at the Hilton Pasadena.

9:00am–5:00pm

Pre-Conference Institute (earn PDUs)

Additional fees.

6:00pm–8:00pm

Registration Material Pick-up

If you registered in advance, this is a convenient opportunity to pick up your registration materials.

6:30pm–8:00pm

Movie Night: A Path Appears – Sex Trafficking in the USA (.5 PDU)

A Path Appears follows intrepid reporters, Nicholas Kristof and Sheryl WuDunn, and actor/advocate, Blake Lively, as they uncover the harshest forms of gender-based oppression and human rights violations, as well as the effective solutions being implemented to combat them. In Episode One: Sex Trafficking in the USA, we meet some of the survivors behind the estimated 300,000 children being trafficked into sexual slavery in the U.S. The widespread existence of this violent crime taking place across America will be illuminated. Note: This film is rated PG-13 and may contain content disturbing to some. Attend at your discretion.

Moderator: Heather Javaherian-Dysinger, OTD, OTR/L

Hosted popcorn and giveaways. Some lucky Movie Night attendees will receive copies of the book or the movie, which includes two additional episodes.

SATURDAY, OCTOBER 27

7:30am–8:00am

Mind-Body Activity: Easy Tai-Chi

8:15am–11:30am

Concurrent Sessions (earn PDUs)

11:30am–2:15pm

Expo Hall Activities, including Poster Presentations (earn PDUs)

Purchase lunch in advance (\$15) and be eligible for prizes.

2:30pm–5:45pm

Concurrent Sessions (earn PDUs)

5:45pm–7:30pm

President's Reception and Dance Party

Join us at the annual President's Reception as we launch the second centennial of OT. DJ, dance floor, photo booth, food, and more will add to the festivities. Come help us rock this party!

7:30pm–9:00pm

Alumni and Student Reception

Hilton Pasadena

FRIDAY, OCTOBER 26

7:30am–8:00am

Mind-Body Activity: Easy Tai-Chi

8:15am–11:30am

Concurrent Sessions (earn PDUs)

11:30am–1:00pm

CFOT Awards Luncheon and Symposium (.5 PDU) \$75; \$10 Students/Gallery Seating (no lunch)

1:00pm–3:00pm

Concurrent Sessions (earn PDUs)

3:15pm–5:15pm

Awards Ceremony and Keynote Address (.5 PDU)

Featuring AOTA Immediate Past President Virginia (Ginny) Stoffel, PhD, OT/L (WI), BCMH, FAOTA, named to AOTA's list of 100 Most Influential OTs

5:15pm–7:15pm

Expo Hall Grand Opening Reception

7:30pm–9:00pm

Alumni and Student Receptions

Hilton Pasadena

SUNDAY, OCTOBER 28

7:30am–9:15am

OTAC Annual Meeting and Breakfast (.5 PDU)

Featuring fitness success coach Joseph Hawthorne, ACSM-CPT, RBT, AKC

9:30am–12:30pm

Concurrent Sessions (earn PDUs)

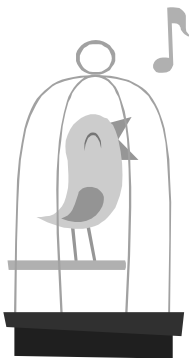
12:30pm–1:15pm

OTAC Practice Café/Lunch \$18

Purchase lunch in advance and be eligible for prizes.

1:30pm–4:45pm

Concurrent Sessions (earn PDUs)



Tweet! Convo! Post!

- Follow us on Twitter @OTACnews
- Start a conversation using #OTACconf2018
- Talk about: The OTAC theme using #buildingOTcapacity
- Your Boldness #otbebold
- Membership Pride #otacmemberpride
- Post on Instagram @otacofca
- And, friend us on Facebook! fb.me/OTACnews

Call for Conference Volunteers

Are you interested in volunteering at Conference?

Volunteering is a great way to learn more about Conference operations, meet other dynamic occupational therapy practitioners and students, enhance your Conference experience, and have fun. There are many opportunities to contribute. You can volunteer at Conference and still participate in other activities. Volunteers play a vital role in the success of the West Coast's largest occupational therapy professional development conference.

You can access the volunteer form on our website at www.otaconline.org in the Annual Conference section.

Deadline to respond: September 21.

TABLE OF CONTENTS

Conference Overview.....	3
Deadlines to Remember; Important Notes.....	4
Conference Location/Transportation Information.....	5
President’s Message; Keynote Presenters.....	6
Co-chairs’ Message; Conference Committee.....	7
Special Conference Activities.....	8
President’s Reception and Dance Party!.....	9
OTAC Awards Ceremony.....	10
CFOT Awards Luncheon and Symposium.....	11
Special Programming for Students.....	12
Schedule (includes Sessions and Daily Special Activities)	
Thursday, October 25 (Pre-conference Institute).....	13
Friday, October 26.....	14
Saturday, October 27.....	17
Sunday, October 28.....	21
Featured Presenters – Building OT Capacity.....	23
Presenters by Name.....	24
Poster Presentations.....	25
Conference-at-a-Glance.....	27
Conference Registration Instructions; Attendee Disclaimers.....	29
Workplace Colleague Discount.....	29
Conference Registration Form.....	30
Exhibitors, Sponsors, and Advertisers.....	31
Sessions by Track/Customize Your Own Schedule.....	32
Why Attend Conference?.....	34
Video Project Competition.....	34
OTAC Board of Directors/Committee Chairs.....	35

OTAC ANNUAL CONFERENCE

A Premier Professional Development Conference — Earn Professional Development Units

OTAC’s Annual Conference offers high quality continuing education at cost-effective prices. Conference attendees have the opportunity to select from more than 140 hours of sessions to apply towards continuing education requirements. You can earn all 24 biennial required PDU’s for your California license renewal at this one Conference (includes additional fee activities). You won’t find an easier, quicker, or more cost-effective way to earn PDU’s required by CBOT (for direct-delivery of occupational therapy services) and by NBCOT (for practice area of emphasis). We recommend that you register early for Conference to ensure acceptance into your preferred sessions.

OTAC members receive a discount on the Conference registration fees. If you are not a member, join now at special Conference rates to earn the Conference discount.

CONFERENCE DISCOUNTED EARLY BIRD REGISTRATION SPECIALS!

- Attend all three days (October 26–28) for only \$319! Must register by September 6, 2018 for this rate.
- OTAC Student Members: check out student reduced fees. Must pre-register for best rate!

2018 Deadlines to Remember

September 6	Discounted Early Bird Registration Special deadline. (BEST VALUE!)
September 7 -October 12	Registration rates increase by \$60 (\$319 + \$60 = \$379).
October 3	Cut-off date for hotel reservations. Room block may sell out before this date; make your reservation today.
October 12	Advanced Conference registration closes at 8:59pm. After this date/time you must register at the event. Onsite fees at the Conference increase by \$90 (\$319 + \$90 = \$409).
	Special meal and needs requests deadline. You must register and submit your requests in writing by this date in our efforts to accommodate you.
	Cut-off date for Workplace Colleague discount.

Important Notes

2018 Certificate Policy and PDU Credits

- **Individual Session Tickets.** When you check in at the Conference Registration Counter, you will receive a blue ticket imprinted with your name on it for every session and activity for which you are registered. The room monitor will collect the tickets as you enter every session and activity room. If the room monitor does not collect your ticket, please seek him/her out. These tickets are maintained at the OTAC office as verification of your attendance in the event of a CBOT audit.
- **Certificate of Completion.** When you check in at the Conference Registration Counter, you will receive a Certificate of Completion form. Fill in the appropriate information for every session you attend. At the conclusion of your attendance at the Conference, submit the white copy of the Certificate of Completion form at the OTAC Conference Registration Counter. Keep the yellow copy for your own records. OTAC will keep an electronic version on file along with the blue tickets for each session as verification in the event of an audit. **Sponsor: Stanbridge College**
- **To earn a Certificate of Completion, attendance is required.** Please arrive on time to the sessions and don’t depart early. Your Certificate should reflect actual number of hours attended. Note: CBOT defines one PDU as one hour of instruction.
- **myotlicense.** PDU’s for OTAC members and subscribers will be entered into your myotlicense record by December 10, 2018.
- **CBOT.** Select PDU’s may be used for Advance Practice Approval as indicated. Check with the California Board for Occupational Therapy (CBOT) for details.
- **CHT.** Some sessions may be used to meet recertification requirements. Check with the Hand Therapy Certification Commission (HTCC) for details.
- **NBCOT.** Sessions may be used to meet recertification. Check with the National Board for Certification of Occupational Therapy (NBCOT) for details. **Sponsor: Stanbridge College**



Conference PDU’s for OT/OTA practitioners will be entered into the OTAC myotlicense records by December 10, 2018.

CONFERENCE INFORMATION

Conference Hotel

Hilton Pasadena

168 South Los Robles Avenue
Pasadena, CA 91101
(626) 577-1000; toll-free (800) 445-8667

OTAC reserved a block of sleeping rooms at the Conference hotel, Hilton Pasadena. Room rates of \$164 are available for Wednesday, October 24 through Sunday, October 28, 2018. When booking your room, please indicate you are attending the OTAC 2018 Annual Conference. *The deadline to receive the OTAC special rate is Wednesday, October 3, 2018.* (Rates and space upon availability.)

Hotel reservations are now open. You may reserve your sleeping room online. The link is available on the OTAC website, www.otaconline.org.

The Hilton Pasadena is a short walk from the Pasadena Convention Center, and shops and restaurants, as well as just several blocks from historic Old Pasadena and the Playhouse District. The hotel's lobby and lounge/restaurant are contemporary, modern, and welcoming. The Hilton Pasadena also offers a complimentary shuttle within a two-mile radius of the hotel.



We encourage you to stay at the Hilton Pasadena to ensure that OTAC meets its contractual obligations for the sleeping rooms that we have set aside for the attendees. The Association pays a penalty if all the reserved sleeping rooms are not utilized.

Pasadena Convention Center

300 E. Green Street, Pasadena, CA 91101

Most of the Annual Conference activities will be held at the Pasadena Convention Center, both in the Conference Building and in the Exhibit and Ballroom Building. See the Conference-at-a-Glance on pages 27, and 28, for the schedule overview and location of activities.

Parking

Note: OTAC does not validate for parking.

Hilton Pasadena. Overnight: \$21.00/self park; \$18.00/valet.
Day use: \$12.00/self park; \$12.00/valet. **All prices are subject to change.**

Pasadena Convention Center.

Daily Parking Rate: \$9. On-site Parking: 800 spaces.
Two entrances: Marengo Avenue to the west and Euclid Avenue to the east between Green Street and Cordova. **All prices are subject to change.**

Additional Parking.

2,500 spaces within a one-block radius.

Guest Registrations

Conference registrants may use Section 4 of the Registration Form on page 30 to pre-register a guest (\$65 per person). A Guest Registration includes the Movie Night/Thursday, Awards Ceremony & Keynote Address/Friday, Easy Tai-Chi/Friday, Exhibit Hall Grand Opening Reception/Friday, Easy Tai-Chi/Saturday, Exhibit Hall/Saturday, and President's Reception/Saturday. This is for those attending in a social capacity only. Guests may not be members of OTAC, an OT/OTA practitioner, or enrolled in an occupational therapy program. *Note: Additional meal functions tickets may also be purchased for guests. 2018 Conference Award Honorees should contact the OTAC office about their guests for the Awards program.*

Transportation

AIRPORTS

Hollywood Burbank Airport (BUR) – 16 miles to Pasadena
2627 N. Hollywood Way, Burbank, CA 91505
(818) 840-8840 • www.hollywoodburbankairport.com

Los Angeles International Airport (LAX) – 32 miles to Pasadena
1 World Way, Los Angeles, CA 90045
(855) 463-5252 • www.flylax.com

Ontario International Airport (ONT) – 37 miles to Pasadena
2900 E. Airport Drive, (Terminal 4) Ontario, CA 91761
(909) 937-2700 • www.flyontario.com

Long Beach Airport (LGB) – 38 miles to Pasadena
4100 Donald Douglas Drive, Long Beach, CA 90808
(562) 570-2600 • www.lgb.org

PUBLIC TRANSPORTATION

Union Station Flyaway
(866) 435-9529 • www.lawa.org/flyaway

Nonstop bus service to and from Los Angeles International Airport (LAX) via Union Station in downtown Los Angeles. From Union Station, passengers can ride the Gold Line light rail to Pasadena. Exit Del Mar Station for the Pasadena Convention Center (approximately five blocks). \$16 fee/round trip.

Foothill Transit Authority
(800) 743-3463 • www.foothilltransit.org

These buses serve the San Gabriel and Pomona valleys, with express bus routes to Pasadena and Downtown Los Angeles. Adult base fare is \$1.25.

Pasadena Transit Bus
(626) 398-8973 • www.cityofpasadena.net/pasadena-transit/

The buses travel between Old Pasadena, South Lake Avenue, and the Playhouse District. Stops are designated throughout the city by a pink triangle marked "ARTS." Adult fare is 75¢.

SHUTTLE SERVICE

Prime Time Shuttle
(800) 733-8267 • www.primetimeshuttle.com

SuperShuttle
(800) 258-3826 • www.supershuttle.com

TAXI SERVICE

LA City Cab • (888) 248-9222
United Taxi • (800) 822-8294

METRO RAIL/METRO BUS SERVICE

Metro Gold Line
(323) 466-3876 • www.metro.net

The Gold Line is a 13-mile light rail line within the Los Angeles-area Metro Rail network that transports passengers from Pasadena to Union Station in downtown Los Angeles. Take it to connect to other Los Angeles rail lines or Amtrak. Trains operate daily and include six stops in Pasadena. Purchase tickets from self-service ticket vending machines at Metro Rail stations. Cost is \$1.75 one way.

CONFERENCE TIP

Make your Conference session selections carefully. Many of our sessions fill up in advance of on-site Conference proceedings and may not be available if you attempt to change. In addition, requesting changes to your session selections on-site may lead to long waits in line at the Registration counter.

PRESIDENT'S MESSAGE

BUILDING OT CAPACITY



Dear OT Profession:

We are very excited to welcome you on this journey of Building OT Capacity for our next century of professional practice and impact. Embracing the call to action of Virginia (Ginny) Stoffel, PhD, OT/L (WI), BCMH, FAOTA, during her years as AOTA president, we intend to engage in a reflection on the impact of attitude, authenticity, and action. She has written that each of these is a component of potential empowerment we can access to drive change and boldly create our own future. We have carefully designed a weekend full of important topics to meet your educational needs for practice, advocacy, and personal development. Let's come together in unity and engage in a dynamic dialogue on Building OT Capacity as individuals, as an association, and as a profession. We can only emerge from this stronger – together!

My vision for our future includes strategy, unity, innovation, and respect for diverse opinions and styles. Your Association leadership is endeavoring a new strategic planning process this year for 2019 and beyond. We will kick off Building OT Capacity with leadership training offered during our Conference as well as the opportunity to network with and meet the chairpersons of our many committees. We would welcome any potential future leader to contact us as soon as possible for participation in our limited-capacity leadership training. Please also consider attending one of the many open special interest committee meetings taking place throughout the weekend – this is your chance to see what opportunities await you and get involved!

On behalf of the OTAC leadership as a whole, I thank you for your participation in making our profession and Association stronger every day with your good contributions – be they in academic teaching, practice, research, or advocacy. Our future is bright because we have chosen to take responsibility in making it so. Embrace your power. Take risks. Be bold. Come and Build OT Capacity with us in beautiful Pasadena!

#OTACconf2018 #otbebold #otacmemberpride #buildingOTcapacity

@OTACnews @otacofca fb.me/OTACnews

Heather J. Kitching, OTD, OTR/L
President, Occupational Therapy Association of California



Heather J. Kitching,
OTD, OTR/L
President

KEYNOTE PRESENTERS

4:15pm–5:15pm
Friday, October 26, 2018

Building OT Capacity with Effective Leadership and Skilled Advocacy

As we embark on occupational therapy's second century, the need to cultivate and actively build capacity of all occupational therapy practitioners, educators, researchers, managers, and entrepreneurs towards leadership and advocacy has never been greater. To accomplish this, skilled use of advocacy approaches to intervention, legislative, and regulatory initiatives must be modeled, operationalized, and shaped to address the evolving distinct culture and leadership of the profession, in the United States and globally.
Earn .5 PDU

Sponsor: CSU, Dominguez Hills



Virginia (Ginny) Stoffel,
PhD, OT/L (WI),
BCMh, FAOTA

7:30am–9:15am
Sunday, October 28, 2018

Building Your Capacity: Individual Strength and Sustainability

Joseph Hawthorne, ACSM-CPT, RBT, AKC, owner of Pasadena's Copper Moose Fitness and strength, conditioning, and nutrition success coach, will discuss health and well-being as an achievement we can pursue anytime. He will address his personal philosophy of enhancing the capacity of an individual for community health and living life well.
Earn .5 PDU



Joseph Hawthorne,
ACSM-CPT, RBT, AKC

BUILDING OT CAPACITY

Throughout this Conference registration brochure you will see the Building OT Capacity logo highlighting those sessions either designed around this theme or those that reflect the theme at some level. As you participate throughout the Conference, you may experience other sessions that embody our vision to build the capacity of the Association, profession, and professionals to more effectively shape our future in the second century of the profession. And to that end, as a premier professional development event, the entirety of this Conference is designed to enrich you as a professional and inspire you as a person. Enjoy, and convo with us at #buildingOTcapacity



CO-CHAIRS' MESSAGE

Dear Occupational Therapy Practitioners, Educators, Students, Colleagues, and Friends,



Heather Javaherian-Dysinger, OTD, OTR/L



Julie Kugel, OTD, MOT, OTR/L

On behalf of the Occupational Therapy Association of California (OTAC) and the 2018 Annual Conference & Expo Committee, we are excited to invite you to the 42nd Annual Conference in Pasadena, California. Last year we celebrated 100 years as a profession and were inspired by the work of our colleagues near and abroad. Now, as we move into the next 100 years of the profession it is a time to channel our strengths to embrace our distinct value in promoting occupational participation and health in our clients and communities. Our Conference theme this year, *Building OT Capacity*, encourages us to be everyday leaders meeting our client and communities occupational needs. You won't want to miss Virginia (Ginny) Stoffel, PhD, OT/L (WL), BCMH, FAOTA, our Friday Keynote presenter and immediate past AOTA president. Stoffel is an associate professor in the Department of Occupational Science & Technology at the University of Wisconsin. Beyond her incredible work as AOTA president, she chaired the AOTA Centennial Vision commission and has worked on numerous service and leadership projects within our profession. Stoffel's work and writing enable us to see the importance of capacity building at

the individual and group levels as well as at the organizational level. Her vision for the profession has been "every member a leader" and she has focused on creating a culture of empowerment, authenticity, and advocacy for the profession of occupational therapy. It is no wonder that she was named to AOTA's 100 Most Influential OTs.

Following the Keynote you will want to take time to enjoy the Grand Opening of the Expo Hall. You will have the opportunity to explore occupational therapy programs, companies, products, and resources. As you go through the Expo Hall be sure to stop by the California Foundation for Occupational Therapy booth and bid on some fun items – all of the proceeds go towards scholarships and research grants.

The schedule for this year represents the largest number of sessions that OTAC has ever had on the schedule. We know that you will have a hard time deciding on which sessions to attend.

We invite you to start the Conference off by joining us for Movie Night where we will engage in discussion and enjoy popcorn together while viewing *A Path Appears – Sex Trafficking in the USA*. On Saturday be sure to visit the Expo Hall and poster sessions (11:30 am to 2:15 pm) between sessions.

Sunday will be a day of health and inspiration that you don't want to miss. We will kick it off with fitness success coach, Joseph Hawthorne, ACSM-CPT, RBT, AKC, who will reframe health from a holistic perspective and invite you to build your personal capacity. Afterward, we are excited to have Wayne Dysinger, MD, MPH; Donna Mann, OTD, BSOT, Dip ABLM, OT/L; and Dragana (Anna) Krpalek, PhD, OTR/L present on *Lifestyle Medicine and Occupational Therapy*. As physicians embrace a lifestyle approach to treating chronic disease and illness, occupational therapy practitioners are poised to be a part of their team providing individual and group treatment to promote health, role engagement, and participation. It is a perfect fit for OT! Afterward get some networking in during lunch and then wrap up your day by applying the Kawa Model to your practice or enhancing your knowledge in areas such as visual impairments and feeding, or on awakening leadership with Virginia (Ginny) Stoffel.

We hope you will join us for a great Conference in a beautiful city nestled in the base of the San Gabriel Mountains and just a few miles from Los Angeles. We look forward to seeing you there!

OUR HOST CITY: PASADENA – INSPIRING ENVIRONS

Come learn and play in Pasadena!

From Hubble to Hawking, some of the world's greatest minds have chosen to live and work in Pasadena. And for good reason. The weather is idyllic. Mountain views and blue skies abound. It's easy to get to. There is an abundance of arts, architecture, and sophisticated cuisine. This fabled city offers intimate neighborhood allure infused with a new modern energy and metropolitan offerings that make this a fabled destination. Come discover all things Pasadena that blend the city's storied past with its exciting present.

Old Pasadena: A bustling urban center with top-rated restaurants, boutiques, exclusive national retailers, and exciting nightlife that fill its Victoria-, Mission Revival-, and Art Deco-era buildings. The 22-block area is listed on the National Register of Historic Places. Visit oncolorado.com

Playhouse District: An eclectic mix of antique sellers, museums, bookstores, restaurants, and one-of-a-kind shops – all enhanced with culture and 1920s architecture. It is also on the National Register of Historic Places. Visit playhousedistrict.org.

South Lake Avenue District: A European-style tree-lined avenue, the South Lake Avenue District is flanked by a mixture of Pasadena institutions like Pie 'n Burger as well as brand-name stores and restaurants. Visit southlakeavenue.org.

Paseo Colorado: A luxurious open-air promenade featuring more than 60 street-front shops, an upscale grocery store, and a movie theatre, it is located directly across the street from the Pasadena Convention Center. Visit thepaseopasadena.com

Getting Around: This cosmopolitan city is easily accessed from Burbank-Glendale-Pasadena, Los Angeles International, Long Beach, and Ontario airports; shuttles, buses, and light rail take you anywhere in the city and the greater Los Angeles area. The Pasadena Convention Center is one half mile from the Gold Line Commuter Rail Station and within walking distance of several bus stops.

Free Smartphone App: Plan your day in Pasadena with the free "Explore Pasadena" smartphone app. Detailed information about museums, shopping, restaurants, performing arts, gardens, movies, architectural tours, sports, popular filming locations, events, and much more are all at your fingertips.

2018 CONFERENCE COMMITTEE

Co-chairs – *Heather Javaherian-Dysinger; Julie Kugel*

Audio-Visual/Signage Coordinator – *Jacalyn Mardirrosian*

Awards Coordinator – *Diane Mayfield*

Call for Papers/Program Coordinator – *Judy Hopkins*

Events Coordinator – *Emily Ecklund*

Exhibits Coordinator – *Mary Kay Gallagher*

Hospitality Coordinator – *Christy Billock*

Photographer – *Diana Su-Erickson*

Proofreader – *Lisa Deshaies*

Registration Coordinator – *Laura Deary*

Student Track Coordinators – *Lina Awshee; Alison George*

Volunteer Coordinators – *Allison Chu; Shirley Nuguid*

OTAC President – *Heather J. Kitching*

OTAC Contributing Staff – *Karen Polastri, Shannon Rutledge, Lindsay Campoy, Tammy Hitchcock, Sara Abrahamyan*

SPECIAL CONFERENCE ACTIVITIES

The OTAC Annual Conference offers much more than the opportunity to earn professional development units. It is also an opportunity to network with friends and colleagues, to make interesting contacts, to discover new resources, and to fully immerse yourself in all the activities designed to support you and the profession.

Movie Night: A Path Appears – Sex Trafficking in the USA (.5 PDU)

Thursday, October 25 • 6:30pm–8:00pm
Hilton Pasadena

A Path Appears follows intrepid reporters, Nicholas Kristof and Sheryl WuDunn, and actor/advocate, Blake Lively, as they uncover the harshest forms of gender-based oppression and human rights violations, as well as the effective solutions being implemented to combat them. In Episode One: Sex Trafficking in the USA, we meet some of the survivors behind the estimated 300,000 children being trafficked into sexual slavery in the U.S. The widespread existence of this violent crime taking place across America will be illuminated. Note: This film is rated PG-13 and may contain content disturbing to some. Attend at your discretion.

Moderator: Heather Javaherian-Dysinger, OTD, OTR/L

Hosted popcorn and giveaways. Some lucky Movie Night attendees will receive copies of the book or the movie, which includes two additional episodes.

CFOT Awards Luncheon and Symposium (.5 PDU) \$75; \$10 students-only gallery (no lunch)

Friday, October 26 • 11:30am–1:00pm
Pasadena Center/Ballroom D

Recipients of the 2018 CFOT scholarships, research grants, and awards will be announced, including honoring the CFOT Humanitarian of the Year, Vijay Gupta, a passionate advocate for artistic voices at the center of social justice. Following the presentation of awards, attendees will be treated to a stimulating address by this year's Honored Lecturer, Jerilyn (Gigi) Smith, PhD, OTR/L, FAOTA, speaking on The Power of Selective "Yes."

Note: You may attend this event even if you are not attending any other part of the Conference. Use the Conference Registration Form on page 30 to purchase tickets.

OTAC Awards Ceremony and Keynote Address (.5 PDU)

Friday, October 26 • 3:15pm–5:15pm
Pasadena Convention Center

- **OTAC Awards Ceremony:** You are invited to help us recognize our 2018 Award honorees who serve with excellence and inspire professional passion.
- **Keynote Address: Building OT Capacity with Effective Leadership and Skilled Advocacy**
Virginia (Ginny) Stoffel, PhD, OT/L (WI), BCMH, FAOTA
As we embark on occupational therapy's second century, the need to cultivate and actively build capacity of all occupational therapy practitioners, educators, researchers, managers, and entrepreneurs towards leadership and advocacy has never been greater. To accomplish this, skilled use of advocacy approaches to intervention, legislative, and regulatory initiatives must be modeled, operationalized, and shaped to address the evolving distinct culture and leadership of the profession, in the United States and globally.

Sponsor: CSU, Dominguez Hills

Build Your Customized Schedule

See pages 32 to 33 for a list of sessions by practice area. Build your own practice area schedule or mix and match.

Expo Hall

Friday, October 26 • 5:15pm–7:15pm
Saturday, October 27 • 11:30am–2:15pm
Pasadena Convention Center, Exhibit Hall A

Don't miss Friday's lively Grand Opening Reception sponsored by our exhibitors. This fun and informal atmosphere offers the perfect opportunity to learn about products and services useful to occupational therapy practitioners as well as to talk with representatives who are actively recruiting for their companies. Saturday offers a convenient lunch option for purchase right on the Expo Hall floor and an opportunity to meet with any exhibitors you didn't connect with on Friday. Don't forget that the Exhibit Hall also offers giveaways and cash prizes. Visit exhibitors to be eligible.

Stop by the OTAC Membership Booth—it is the central hub of activity: meet with OTAC leaders, learn about OTAC, win prizes while you learn, and more!

Poster Presentations (earn up to 2 PDUs)

Saturday, October 27 • 11:30am–12:30pm and 1:00pm–2:00pm
Pasadena Convention Center, Exhibit Hall A

See pages 25 and 26 for a list of posters.

Alumni and Student Receptions

Friday, October 26 • 7:30pm–9:30pm/Saturday, October 27 • 7:30pm–9:30pm
Hilton Pasadena

Celebrate the conclusion of the first day of learning with these networking opportunities. The Alumni and Student Receptions are always a highlight of Conference. Express your appreciation to our OT and OTA colleges and universities with your support.



Win a \$50 Gift Card!
Advance purchase Saturday Exhibit Hall lunch and be eligible to win \$50 in gift cards.

SPECIAL CONFERENCE ACTIVITIES

President's Reception and Dance Party!

Saturday, October 27 • 6:00pm–7:30pm

Hilton Pasadena

All Conference attendees are invited to relax and network at this event (no-host bar). Come meet OTAC and AOTA leaders, presenters, and other honorees. Join us for special activities celebrating OT's second centennial. DJ and dance floor, photo booth, and more!

Sponsor: CSU, Dominguez Hills

OTAC Annual Meeting and Breakfast (.5 PDU)

Sunday, October 28 • 7:30am–9:15am

Pasadena Convention Center

This event is included in your registration fee (if you selected any session combination that includes Sunday). OTAC President Heather J. Kitching, OTD, OTR/L, invites you to learn about updates on the Association as well as to hear from keynote, Joseph Hawthorne, ACSM-CPT, RBT, AKC, on Building Your Capacity: Individual Strength and Sustainability.

Note: You may attend this event even if you are not attending any other part of the Conference. Use the Conference Registration Form on page 30 to purchase tickets.

OT Practice Café/Lunch – \$18

Sunday, October 28 • 12:30pm–1:15pm

Come grab a "picnic" lunch and sit at your OT hot topic table of choice.

Mind-Body Balance Opportunities

Friday, October 26: Easy Tai-Chi • 7:30am–8:00am

Saturday, October 27: Easy Tai-Chi • 7:30am–8:00am

Annual Conference attendees can experience mind-body balance at Conference: Come dressed in your comfortable Conference attire. Go right from Tai-Chi to your first session.

What To Do in Pasadena

Looking for recommendations on dining, shopping, and activity options? Have questions about the Conference or OTAC? Stop by the Hospitality Table in the Conference registration area.

CONFERENCE PERKS!

Conference Tote Bag. First 1,000 checking in at registration will receive this useful tote bag. Be sure to check through the bag for a possible winning raffle ticket.

Sponsor: Stanbridge University

Keynote Address Engagement Activity. It's a surprise! Will you 'win' a prize? Come find out.

Exhibit Vendor Resource Guide and Prize Giveaways. This Guide is your passport to winning one of many giveaways. Bring plenty of business cards to leave behind with exhibitors for their drawings. Drop off your Bingo card to be eligible for OTAC prizes and cash! Must be present to win. (Saturday, 2:00pm)

Sponsor: psymark, LLC

OTAC Exhibit Booth. Answer a trivia question. Spin the prize wheel.

Win a \$50 Gift Card!

Advance purchase a Saturday Expo Hall lunch or Sunday OT Practice Café lunch and be eligible to win \$50 in gift cards.

PRESIDENT'S RECEPTION AND DANCE PARTY!

Saturday, October 27 • 6:00pm–7:30pm

Come kick off the second centennial of the profession!

OTAC President Heather J. Kitching, OTD, OTR/L, personally invites all Conference attendees to join us in celebrating OTAC's kicking off of our second centennial! Come 'party on' with a live DJ/dance floor and photo booth to snap some memorable pics. Look forward to light hors d'oeuvres before you head out for dinner plans.

Sponsor: CSU, Dominguez Hills

Follow the Annual Conference on our free mobile app. Coming Soon!



The mobile app includes:

- Full conference schedule and a feature to build a customized schedule
- Social sharing on Facebook, Twitter, and LinkedIn
- Detailed information about presenters, exhibitors, and sponsors
- Notifications of important updates, special offers, and more.

It's easy! Download the 2018 OTAC Annual Conference app for iPhone, iPad, and Android directly from the Apple App Store and Google Play Store and all other web browser-enabled devices by searching OTAC. Once you have found the app, tap either Download or Install. Login note: Login for the mobile app is not the same as your OTAC membership/customer login. You must create a new account to access the app's full features.

www.otaconline.org/conference

Sponsor: University of St. Augustine



Honoring Those Who Inspire Professional Excellence

COME HELP CELEBRATE OUR OTAC 2018 AWARD HONOREES

Please join us in congratulating your friends and colleagues on their awards as well as expressing your appreciation to them for their contributions to the profession and the Association. These individuals will be recognized at the Awards Ceremony, Friday, October 26, 3:15pm–4:15pm. This event is open to all Conference attendees registered for Friday.

The following awards may be presented:

- Lifetime Achievement Award*
- Award of Excellence*
- Janice Matsutsuyu Outstanding Service Award*
- OT Practice Award*
- Award of Appreciation*
- Fieldwork Educator Award*
- OT Entrepreneur Award*
- OTA Honorary Award*
- Outstanding Student Award*
- Luella Grangaard Political Action Award*



The Many Faces of Past Conferences

Celebrating Our 37th Anniversary!

CFOT Awards Luncheon and Symposium

Friday, October 26, 2018 • 11:30am–1:00pm

About the Awards Luncheon and Symposium

Recipients of the 2018 CFOT scholarships, research grants, and awards will be announced at the annual CFOT Awards Luncheon and Symposium on Friday, October 26, 11:30am–1:00pm. Following presentation of the awards, attendees will be inspired to build upon their capacity with Jerilyn (Gigi) Smith, PhD, OTR/L, FAOTA, this year's CFOT Honored Lecturer.

Honored Lecturer – Jerilyn (Gigi) Smith, PhD, OTR/L, FAOTA

The Power of Selective “Yes”

Our professional and personal tapestry is woven by the opportunities and experiences in our lives that we either embrace or pass by. Saying “yes” (and selectively saying “no”) gives us the power to create our unique occupational performance pattern of living, which can lead to realizing and participating in a life fully lived.

Jerilyn (Gigi) Smith, PhD, OTR/L, FAOTA, has been an occupational therapy practitioner for over 35 years. She received her bachelor's and post professional master's in occupational therapy from San Jose State University (SJSU) and earned her PhD in health sciences from Touro University International. Smith is highly regarded in her roles at the SJSU Occupational Therapy Program where she is an associate professor and teaches courses in practice areas, professional development, and research. She also serves as a faculty advisor for student research projects. Smith is the graduate admissions coordinator and advisor for the Occupational Therapy Program and she sits on multiple committees at the university, college, and departmental levels. She has written several chapters in well-respected occupational therapy textbooks. She has lectured locally, nationally, and internationally on various topics, but most extensively on occupational therapy's role in dysphagia intervention. Smith has been an active member of both the American Occupational Therapy Association (AOTA) and the Occupational Therapy Association of California (OTAC) since the time she was a student, serving on many different committees and in multiple leadership roles. Currently she is serving in the elected officer position of secretary on the OTAC Board of Directors. Her clinical experience includes working with adults with neurological disorders in a variety of practice settings and she currently works with children, birth to three years old, in early intervention home care.



Jerilyn (Gigi) Smith,
PhD, OTR/L, FAOTA

Humanitarian of the Year – Vijay Gupta

Vijay Gupta is a violinist, speaker, and advocate for the power of music to change lives. Gupta joined the Los Angeles Philharmonic at age 19 after completing a master's in violin performance from the Yale School of Music and a bachelor's in biology from Marist College. As a 2011 TED Senior Fellow, Gupta founded Street Symphony, a non-profit organization dedicated to placing music at the heart of social justice by engaging communities in greater Los Angeles experiencing homelessness and incarceration through musical performance and dialogue. In 2017, Gupta was awarded the Leonard Bernstein Lifetime Achievement award by the Longy School of Music of Bard College, and was named a Kennedy Center Citizen Artist Fellow. Gupta believes that musical engagement reconnects us to our shared humanity across vast divides, and ultimately impacts social justice.



Vijay Gupta



OTAC Friday Keynote Presenter Virginia (Ginny) Stoffel invites you to find your treasure at the CFOT Silent Auction.

CFOT SILENT AUCTION

The CFOT booth in the OTAC Expo Hall will be buzzing with activity. Your support is encouraged and appreciated both as bidders and donors of auction items. CFOT annually awards thousands of dollars for scholarships and research grants. Help CFOT meet, and exceed, its goal.

Donations of auction items valued at \$25 or greater are needed. Please contact CFOT by email at silentauction@cfot.org.



Pat Nagaishi, PhD,
OTR/L, CFOT
President

SPECIAL PROGRAMMING FOR STUDENTS

The OTAC Annual Conference Committee in partnership with the OTAC Student Leadership Committee is pleased to again offer special programming to meet the needs of our student members. **Students receive a discount on Conference registration fees.**

Activities of Interest

■ Thursday, October 25

- Movie Night: *A Path Appears – Sex Trafficking in the USA* (Free for Conference attendees)

■ Friday, October 26

- Mind-Body Activity: Easy Tai-Chi
- CFOT Awards Luncheon and Symposium—\$75, or \$10 student-only gallery seating/no lunch
- Student Track (Sessions 16, 19, 20, 36, 46, 48, 50)
- OTAC Awards Ceremony
- Keynote Address, Immediate Past AOTA President Virginia (Ginny) Stoffel, PhD, OT/L (WI), BCMH, FAOTA
- Expo Hall Grand Opening Reception—Meet Recruiting Exhibitors and Network with Practitioners
- Alumni/Student Receptions

■ Saturday, October 27

- Mind-Body Activity: Easy Tai-Chi
- Student Track (Sessions 52, 56, 64, 67, 70, 71, 75, 79, 80, 84)
- Expo Hall Activities: Poster Presentations, visit more exhibitors/recruiters, play Bingo for cash and prizes, purchase lunch in advance for only \$15 and be eligible for a drawing
- President's Reception and Dance Party!
- Alumni/Student Reception

■ Sunday, October 28

- All concurrent sessions on Sunday are open to students at the special student registration fee schedule
- OTAC Annual Meeting and Breakfast—*included in Sunday registration fee. Featuring fitness success coach Joseph Hawthorne, ACSM-CPT, RBT, AKC*
- OT Practice Café/Lunch—*Come discuss OT practice hot topics. Purchase lunch in advance for only \$18 and be eligible for a prize drawing.*



Special
OTAC Student
Registration
Discount

Students
may pay the
practitioner
rates to attend
any session.



WHAT SESSIONS THE STUDENT REGISTRATION RATE DISCOUNT INCLUDES

The student discounted registration rate is applicable for the following sessions schedule:

**Friday – Sessions
16, 19, 20, 36, 46, 48, 50**

**Saturday – Sessions
52, 56, 64, 67, 70, 71, 74, 79, 80, 84**

Sunday – Any Session

Student registration rate discount also includes daily special activities and events (additional fees may apply to some activities and events).

Students may select practitioner sessions on Friday and Saturday at the practitioner registration rate.

AGENDA: THURSDAY, OCTOBER 25 • PRE-CONFERENCE INSTITUTE

Thursday – Schedule

8:00am–9:30am and Noon–2:00pm

Registration Hours

These times are just for those attending the Thursday Pre-conference Institute at the Hilton Pasadena.

Note: Be sure to turn in your Certificate of Completion at the Registration table if you will not be attending any other Conference sessions.

9:00am–12:00pm

1 Addressing Sleep in Occupational Therapy: A 24-hour Approach (3 PDUs)

Samantha Valasek, OTD, OTR/L; Rebecca Cunningham, OTD, OTR/L; Marissa Marchioni, OTD, OTR/L

Adequate sleep of sufficient duration is foundational to daily occupational engagement. This presentation will review sleep physiology and the sleep cycle, tools for addressing sleep hygiene and positioning, and strategies for managing specific sleep barriers.

9:00am–12:00pm

2 Building Skills for Engaging People Living with Dementia (3 PDUs)

Jenna Mele, OTD, OTR/L, CCM, RYT

Many geriatric clients live with dementia symptoms. This presentation will prepare practitioners with skills and knowledge from the positive approach to care model. Attendees will practice a positive physical approach and learn how to initiate touch.

9:00am–12:00pm

3 Getting Comfortable With Feeding – You Can Do It! (3 PDUs)

Judith Freeman, MA, OTR/L

Knowledge of sensory processing, anatomy, physiology, and normal development will equip you to provide therapy for pediatric feeding issues. This presentation will provide assessment and treatment strategies that apply to children who are swallow safe. **CBOT Advanced Practice Application pending.**

9:00am–4:00pm

4 The Private Practice Business Bootcamp (6 PDUs)

Brandon Seigel

The Private Practice Bootcamp is an opportunity of a lifetime! Attendees will enjoy an educational journey to learning essential business protocols, systems, and solutions for creating, managing, and scaling successful private practices in today's environment. *Lunch break on own, noon to 1:00pm.*

1:00pm–4:00pm

5 OT and Pain Management in Acute Care (3 PDUs)

Julie Sullivan, OTR/L, C/NDT; Annie Stepka, MS, OTR/L

Occupational therapy's unique role in Dominican Hospital's interdisciplinary team approach for pain management with a focus on current research, frameworks, and resources will be highlighted. Treatment ideas, assessments, and group protocols will be discussed.

1:00pm–4:00pm

6 Opportunities for Incorporating Dogs into OT Practice (3 PDUs)

Karen Ni, OTD, OTR/L

Attendees will learn about the opportunities for OTs to implement animal-assisted interventions into various practice areas and the roles of dogs in health care. Training and education needed will be discussed through following the speaker's personal journey.

Thursday – Special Activities

8:00am–9:30am and Noon–2:00pm

Registration Hours

These times are just for those attending the Thursday Pre-conference Institute.

6:00pm–8:00pm

Registration Pick-up

Anyone who has registered in advance is welcomed to pick up their registration packet. If you are checking into the Hilton Pasadena on Thursday or if you live in the area and are stopping by to pick up your registration packet (you must have registered in advance), be sure to stay for the Thursday Movie Night. Popcorn provided.

6:30pm–8:00pm

A Movie Night: A Path Appears – Sex Trafficking in the USA (.5 PDU)

A Path Appears follows intrepid reporters, Nicholas Kristof and Sheryl WuDunn, and actor/advocate, Blake Lively, as they uncover the harshest forms of gender-based oppression and human rights violations, as well as the effective solutions being implemented to combat them. In Episode One: Sex Trafficking in the USA, we meet some of the survivors behind the estimated 300,000 children being trafficked into sexual slavery in the U.S. The widespread existence of this violent crime taking place across America will be illuminated. Note: This film is rated PG-13 and may contain content disturbing to some. Attend at your discretion.

Moderator: Heather Javaherian-Dysinger, OTD, OTR/L

Hosted popcorn and giveaways. Some lucky Movie Night attendees will receive copies of the book or the movie, which includes two additional episodes.

OTAC Special Interest Meetings

You are welcomed to join OTAC committee chairs to learn about their activities and service to the members. Use the Registration Form to RSVP. Circle the code under ACTIVITIES.

AGA – Advocacy and Government Affairs

Friday, October 26 * 7:30am – 8:15am

PER – Practice, Ethics, and Reimbursement

Friday, October 26 * 7:30am – 8:15am

PPN – Private Practice Network

Thursday, October 25 * 4:30pm – 6:00pm

PDL – Professional Development and Leadership

Saturday, October 27 * 7:30am – 8:15am

SL/M – Student Leadership and Membership Engagement

Friday, October 26 * 8:30am – 10:00am

1:00pm to 5:00pm

7 The Evaluation in Ayres Sensory Integration (EASI): Normative Data Collection (4 PDUs)

Sue Trautman, MA, OTR/L; Zoe Mailloux, OTD, OTR/L, FAOTA; Aja Roley, MA, OTR/L

Comprehensive assessment is key to individualized, effective intervention for children with sensory integration concerns. The Evaluation in Ayres Sensory Integration (EASI), an open access and internationally normed set of tests, will assess sensory integrative functions which underlie occupation.

AGENDA: FRIDAY, OCTOBER 26

Friday – Special Activities

7:15am–5:00pm

Friday Registration Hours

Pre-registration for Conference is strongly encouraged. Attendance at sessions and events is first-registered, first-served.

7:30am–8:00am

B Mind-Body Activity: Easy Tai-Chi (No PDUs)

Barbara Brewer, COTA/L

Tai-Chi is a balance activity, which tones the body, increases breathing capacity, lowers stress level, improves organ function, and corrects poor posture. This is energizing for the body, mind, and spirit to start the day.

11:30am–1:00pm

CFOT Awards Luncheon and Symposium (.5 PDU)

Honored Lecturer: Jerilyn (Gigi) Smith, PhD, OTR/L, FAOTA

Come help recognize recipients of the 2018 California Foundation of Occupational Therapy (CFOT) scholarships, research grants, and awards including the CFOT Humanitarian of the Year – Vijay Gupta, violinist, speaker, and advocate.

An additional \$75 fee is required to attend this event.

Students can register for \$10 for the no-lunch gallery.

Note: You may attend this event even if you are not attending any other part of the Conference. Use the Conference Registration Form on page 30 to purchase your ticket.

3:15pm–5:15pm

37 OTAC Awards Ceremony and Keynote Address (.5 PDU)

- **OTAC Awards Ceremony:** You are invited to help us recognize our 2018 Award honorees who serve with excellence and inspire professional passion.
- **Keynote Address: Building OT Capacity with Effective Leadership and Skilled Advocacy (.5 PDU)**
Virginia (Ginny) Stoffel, PhD, OT/L (WI), BCMH, FAOTA
As we embark on occupational therapy's second century, the need to cultivate and actively build capacity of all occupational therapy practitioners, educators, researchers, managers, and entrepreneurs towards leadership and advocacy has never been greater. To accomplish this, skilled use of advocacy approaches to intervention, legislative, and regulatory initiatives must be modeled, operationalized, and shaped to address the evolving distinct culture and leadership of the profession, in the United States and globally.

Sponsor: CSU, Dominguez Hills

5:15pm–7:15pm

C Expo Hall Grand Opening Reception

Located in the Pasadena Convention Center this Expo includes a complimentary reception courtesy of our exhibitors. Please visit the exhibitors and express your appreciation.

7:30pm–9:00pm

Alumni and Student Receptions

OTAC's Annual Conference is a convenient — and fun — opportunity to network with your fellow alumni and students. Always a Conference highlight. Located in the Hilton Pasadena.

Friday – Schedule

7:15am–5:00pm

Friday Registration Hours

Pre-registration for Conference is strongly encouraged. Attendance at sessions and activities is first-registered, first-served.

7:30am–8:00am

B Mind-Body Activity: Easy Tai-Chi (No PDUs)

Barbara Brewer, COTA/L

Tai-Chi is a balance activity, which tones the body, increases breathing capacity, lowers stress level, improves organ function, and corrects poor posture. This is energizing for the body, mind, and spirit to start the day.

8:15am–9:45am

10 Can Video Games Foster Engagement in Therapy? (1.5 PDUs)

Douglas Rakoski, OTD, OTR/L, ATP; Katherine Fischer, OTS; Jessica Lin, OTS

The level of engagement and consequent impact on occupational performance among individuals participating in computer therapy in the inpatient rehabilitation setting will be presented. Case study examples will be used to integrate this information.

8:15am–9:45am

11 Epilepsy Care: An Outpatient, Lifestyle Management Approach (1.5 PDUs)

Lindsey Reeves, OTD, OTR/L; Rebecca Cunningham, OTD, OTR/L

Learn about outpatient occupational therapy lifestyle treatment for people with epilepsy including outcome measures, intervention tools, and interdisciplinary team practices.

8:15am–9:45am

12 Bridging the Gap Between Simulations in Education and Disability Perspectives (1.5 PDUs)

Samia Rafeedie, OTD, OTR/L, BCPR, CBIS; Antonietta Iannaccone, OTS

Simulation is a popular instructional method utilized in occupational therapy education. While the literature outlines its benefits, disability perspectives are not represented. Educators should honor the lived experience and bridge this gap with recommendations from disability studies.

8:15am–9:45am

13 Occupational Therapy Intervention for Chemotherapy-induced Peripheral Neuropathy (1.5 PDUs)

Cynthia Cooper, MFA, MA, OTR/L, CHT

This presentation describes chemotherapy-induced peripheral neuropathy (CIPN) and demonstrates evidence-based techniques for improved function and sensation. Attendees will learn and practice gentle exercises and activities to promote occupational competency and sensory function.

8:15am–9:45am

14 Substance Overdose: Death and the Kawa Model (1.5 PDUs)

Aaron Weis, OTD, OTR/L

The Kawa Model was used to illustrate the parent's journey in losing their child to substance overdose. Parents drew rivers and described their flow, riverbed, rocks, and driftwood. Findings suggest potential roles for occupational therapy.

8:15am–9:45am

15 Self-regulation Challenges in Infants and Toddlers (1.5 PDUs)

Jerilyn (Gigi) Smith, PhD, OTR/L, FAOTA

Children born with Neonatal Abstinence Syndrome often have difficulty with self-regulation. This interactive session will explore the impact of self-regulation issues in children (0-3 years) and present intervention suggestions for early intervention.

AGENDA: FRIDAY, OCTOBER 26

8:15am–9:45am

16 An Interprofessional Approach to Healthcare: A USC Student-run Clinic (STUDENT TRACK – NO PDUs)

Gyeombi Lee, OTS; Zari Morales, OTS; Tracy Tang, OTS

This presentation will explore interprofessional care and the role of occupational therapy as experienced through University of Southern California's Student-run Clinic, a team consisting of medical, pharmacy, physician assistant, and occupational therapy students and preceptors.

8:15am–11:30am

17 CPT® Coding for Occupational Therapy Services: What You Need to Know (3 PDUs)

Katie Jordan, OTD, OTR/L; Sabrena McCarley, MBA-SL, OTR/L, CLIPP, RAC-CT

In this presentation attendees will learn how to understand the CPT® code revision process from description through valuation for reimbursement and describe changes to CPT® coding for occupational therapy services and how the 2018 Medicare Physician Fee Schedule (MPFS) will impact occupational therapy services. In addition, recent updates and changes to the common CPT® codes that occupational therapy practitioners use within the Physical Medicine and Rehabilitation code family as well as additional CPT® codes available to occupational therapy practitioners will be reviewed.

8:15am–11:30am

18 Using the OT Practice Framework to Re-ignite Fire into Practice (3 PDUs)

Heather Thomas, PhD, OTR/L

Using the OT Practice Framework, participants will learn how to re-ignite focus and fire into everyday practice using the Framework concepts, which reflect the dynamic and exciting changes that have emerged in our profession.



8:15am–11:30am

19 School-based Practice: Application of Laws and Evidence (3 PDUs)

Winifred Schultz-Krohn, PhD, OTR/L, BCP, FAOTA; Asha Asher, MA, OTR/L, SCSS, FAOTA; Joyce Rioux, EdD, OTR/L, SCSS

This advanced workshop will review educational laws and regulations specific to evaluation processes and outcome measures. Emphasis will be to help school practitioners build subject matter expertise, deepen critical reasoning, refine practice, and become a change agent.

8:15am–11:30am

20 The Impact Anti-immigrant Environment Has on Occupation (3 PDUs)

Celso Delgado, Jr., OTD, OTR/L, BCMH; Flavio Guzman Magaña, BA; Lucía I. Floríndez, MA

Current political climate on immigration has proven to have negative health outcomes on immigrant populations. Attendees will be presented with an occupational and mental health perspective on the impact an anti-immigrant environment has on Latinos.

10:00am–11:30am

30 Siri, Alexa, Google? Voice Home Automation is Here! (1.5 PDUs)

Kathleen Shanfield, MS, OTR/L, ATP; Denise Lau, MOT, OTR/L

People with disabilities have new tools available to control their environments with voice activated speakers like Siri, Amazon Echo, and Google Home. Come learn how to use these devices with your clients and families.

10:00am–11:30am

31 Human Trafficking: OT's Role in Continuum of Care (1.5 PDUs)

Emily Ecklund, MOT, OTR/L; Esther Bae, MA, OT/L; Kathleen Gorman, OTD, OTR/L; Esther Suh, MA, OT/L

Limited literature exists regarding occupational therapy's role in human trafficking. This presentation aims to educate and advocate the role of occupational therapy practitioners in 1) providing intervention for survivors in continuum of care and 2) combating human trafficking.

10:00am–11:30am

32 Promoting Self-advocacy for College Students with Disabilities (1.5 PDUs)

Erwin Borja, MA, OTR/L

For individuals with disabilities entering college, self-advocacy is essential for success and independence. This presentation will review needs and best practices for fostering self-advocacy skills in students with disabilities, and implementation into practice.

10:00am–11:30am

33 Improving Patient and Caregiver Discharge Readiness in Oncology (1.5 PDUs)

Vivian Chang, MA, OTR/L; Sherry Hite, MOT, OTR/L

This presentation will address the ramifications of hematological cancer treatments and how occupational therapy practitioners can help address patients' and caregivers' unmet needs during and after hospitalization to facilitate successful reintegration into meaningful occupations.

10:00am–11:30am

34 Occupational Therapy and Spirituality: Exploring Caregivers' Perspectives (1.5 PDUs)

Heather Roesse, OTD, OTR/L; Fabiola Prasetio, OTS; Marie Umeda, OTS

Spirituality has a significant impact in promoting coping abilities, resiliency, and wellness in individuals. The presentation will explore the definitions of spirituality and the effects on family caregivers through the scope of occupational therapy practice.

10:00am–11:30am

35 Kids Who Hurt: OT for Pain (1.5 PDUs)

Talitha Cox, MA, OTR/L

Pain diagnoses are on the rise. Occupational therapy practitioners can make a difference in the ability to manage pain and maintain function in daily life. Learn about approaches to pain management, assessment tools, and specific pain diagnoses.

10:00am–11:30am

36 A Life of a COTA/L (STUDENT TRACK – NO PDUS)

Marlene Steele, MHA/Ed, COTA/L

This course is an occupational profile of a COTA who has been in practice for over 25 years. Come learn about how to partner with a COTA when you go out to practice. Learn about what a COTA can do in practice and leadership roles. Learn about the regulations for supervision of a COTA.

CBOT Advanced Practice Applications

Applications are pending for the following sessions:

3 – Getting Comfortable with Feeding – You Can Do It!

55 – Feeding, Eating, and Swallowing in School-based Practice

AGENDA: FRIDAY, OCTOBER 26

11:30am–1:00pm

CFOT Awards Luncheon and Symposium (.5 PDU)

Honored Lecturer: Jerilyn (Gigi) Smith, PhD, OTR/L, FAOTA

Come help recognize recipients of the 2018 California Foundation of Occupational Therapy (CFOT) scholarships, research grants, and awards including the CFOT Humanitarian of the Year — Vijay Gupta.

An additional \$75 fee is required to attend this event.

Students can register for \$75 or \$10 for the student-only no-lunch gallery.

Note: You may attend this event even if you are not attending any other part of the Conference. Use the Conference Registration Form on page 30 to purchase your ticket.



1:00pm–3:00pm

40 Ergonomics: The Office and Beyond (2 PDUs)

Marissa Marchioni, OTD, OTR/L; Samantha Valasek, OTD, OTR/L

Attend this presentation to learn about basic ergonomic principles and applications to varied settings. Improve your knowledge base as we examine applications and strategies for educating workers about the importance of ergonomics and body mechanics for prevention of musculoskeletal disorders.

1:00pm–3:00pm

41 Using the 3D Printer in Occupational Therapy Education (2 PDUs)

Maureen Johnson, MS, OT/L, C/NDT; Kasey Brady, MOTS; Raymond Nubla, MOTS; Erica Sequeira, MOTS

This presentation will describe the use of 3D printing to facilitate critical thinking and problem-solving with an assistive technology class.

1:00pm–3:00pm

42 Concept to Implementation: Overview of a Conference for Young Adults with Disabilities (2 PDUs)

Rena Katrikh, OTD, OTR/L; Madison Aguirre, OTR/L; Jean Pacifico-Banta, OTD, OTR/L; Lisa Test, OTD, OTR/L

This workshop is an overview of a “workers conference” for young adults with disabilities. A student-centered needs assessment informed the conference theme, “Health and Wellness,” with content guided by principles of Universal Design for Learning, participation, and self-determination.

1:00pm–3:00pm

43 Fatigue Management for Multiple Sclerosis (2 PDUs)

Rebecca Cunningham, OTD, OTR/L; Ashley Uyeshiro Simon, OTD, OTR/L, MSCS

Attendees will learn about multifactorial bases for fatigue symptomatology in multiple sclerosis, assessments, and intervention techniques for the management of primary and secondary fatigue for use by occupational therapy providers.

1:00pm–3:00pm

44 Postsecondary Students with ASD: Sleep, Stress, and Social Participation (2 PDUs)

Tracy Jalaba, OTD, OTR/L; Linsey Smith, OTD, OTR/L

Individuals with autism sensory disorder (ASD) are increasingly pursuing postsecondary education, and are faced with unique barriers and facilitators within these contexts. Learn how to support these students in three main areas of challenge: sleep, stress, and social participation.

1:00pm–3:00pm

45 Psychosocial Interventions Across the Continuum of Cancer Care (2 PDUs)

Vanessa Yanez, MS, OTR/L; Sherry Hite, MOT, OTR/L; Lynn Kim, OTD, OTR/L

This presentation will explore occupational therapy’s role in psychosocial care in oncology. It will discuss evidence-based assessment methods and interventions to effectively address psychosocial challenges that impair quality of life across the cancer care continuum.

1:00pm–3:00pm

46 A Holistic Approach to Addressing Sexuality: The Pavlovich Sexuality Questionnaire (2 PDUs)

Sharon Pavlovich, MAM, COTA/L

This presentation challenges common misunderstandings and assumptions about sexuality and introduces a holistic model for reframing the concept of sexuality in occupational therapy. Supplemental to this, the Pavlovich Sexuality Questionnaire, a holistic and narrative-based tool, will be reviewed.

1:00pm–3:00pm

47 Promoting Oral Health for Children with Special Needs (2 PDUs)

Kimberly Goldstein, MA, OTR/L; Narayana Darst, BA

Oral health impacts many areas of occupation, including self-care, feeding, sleep, and social participation. Our presentation outlines the unique, interdisciplinary roles of occupational therapy and other healthcare disciplines in oral health promotion.

1:00pm–3:00pm

48 School-based Telehealth: Bringing Services to Any Child Anywhere (2 PDUs)

Joann Sorg, MS, OTR/L

Telehealth for school-based occupational therapy (OT) sparks both curiosity and excitement. Learn how online OT is benefitting students. See familiar OT interventions applied in a virtual setting. Explore the research and regulations for effective and compliant teletherapy.

1:00pm–3:00pm

49 The Science and Art of Handcrafts in Occupational Therapy (2 PDUs)

Guy McCormack, PhD, OTR/L, FAOTA

Occupational therapy has a long history of using handcrafts with various populations, while neuroscience has revealed benefits of manual activities. History and evidence will be reviewed of the “effort driven reward circuit” and the frontoparietal attention network.

1:00pm–3:00pm

50 Welcome to the OT/OTA Career Shark Tank! (STUDENT TRACK – NO PDUs)

Brandon Seigel; Featured panelists

In this two-hour interactive panel discussion, students will have an opportunity to enter a “Career Shark Tank” where they will learn the inside scoop on the secrets to landing their ideal position in an ever-changing employment environment!

Build your Customized Schedule

See pages 32 to 33 for a list of sessions by practice area. Build your own practice area schedule or mix and match.

AGENDA: FRIDAY, OCTOBER 26

3:15pm–5:15pm

37 OTAC Awards Ceremony and Keynote Address (.5 PDU)

- **OTAC Awards Ceremony:** You are invited to help us recognize our 2018 Award honorees who serve with excellence and inspire professional passion.
- **Keynote Address: Building OT Capacity with Effective Leadership and Skilled Advocacy (.5 PDU)**
Virginia (Ginny) Stoffel, PhD, OT/L (WI), BCMH, FAOTA
As we embark on occupational therapy's second century, the need to cultivate and actively build capacity of all occupational therapy practitioners, educators, researchers, managers, and entrepreneurs towards leadership and advocacy has never been greater. To accomplish this, skilled use of advocacy approaches to intervention, legislative, and regulatory initiatives must be modeled, operationalized, and shaped to address the evolving distinct culture and leadership of the profession, in the United States and globally.



Sponsor: CSU, Dominguez Hills

5:15pm–7:15pm

C Expo Hall Grand Opening Reception

Located in the Pasadena Convention Center this Expo includes a complimentary reception courtesy of our exhibitors. Please visit the exhibitors and express your appreciation.

7:30pm–9:00pm

Alumni and Student Receptions

OTAC's Annual Conference is a convenient – and fun – opportunity to network with your fellow alumni and students. Always a Conference highlight. Located in the Hilton Pasadena.

AGENDA: SATURDAY, OCTOBER 27

Saturday – Schedule

7:15am–6:00pm

Saturday Registration Hours

Pre-registration for Conference is strongly encouraged. Attendance at sessions and activities is first-registered, first-served.

7:15am–8:00am

D Mind-Body Activity: Easy Tai-Chi (No PDUs)

Barbara Brewer, COTA/L

Tai-Chi is a balance activity, which tones the body, increases breathing capacity, lowers stress level, improves organ function, and corrects poor posture. This is energizing for the body, mind, and spirit to start the day.

8:15am–9:45am

51 The Pedagogy of Clinical Reasoning in OT Students (1.5 PDUs)

Michelle Thakur, MOT; Kate Hayner, EdD, OTR/L; Laura Trimble, OTR/L

This interactive workshop includes: 1) literature review on the pedagogy of clinical reasoning, 2) recent research into experiential learning methods for occupational therapy clinical reasoning, and 3) presenter/participant reflections about learning/teaching OT clinical reasoning.

EXPO HALL ACTIVITIES

Pasadena Convention Center

Just steps away from the Conference sessions.

Friday, October 26 • 5:15pm–7:15pm

Saturday, October 27 • 11:30am–2:15pm

Join our Exhibitors and Sponsors in the Expo Hall to:

- learn about **new products and services**
- meet with **exhibiting recruiters**
- be eligible for **giveaways**
- play **Bingo** for cash prizes
- enjoy the **Grand Opening Reception**—Friday (5:15pm–7:15pm)
- **earn PDUs** by viewing posters – Saturday
- grab a quick **lunch** (\$15 advanced purchase) – Saturday
- chat with **OTAC and AOTA leaders**
- bid on **CFOT auction items**
- learn about your **professional association**

Win \$50 in Gift Cards!

Register in advance for the Saturday and/or Sunday lunches to be eligible for the gift card giveaways.

Saturday – Special Activities

7:15am–6:00pm

Saturday Registration Hours

Pre-registration for Conference is strongly encouraged. Attendance at sessions and activities is first-registered, first-served.

7:30am–8:00am

D Mind-Body Activity: Easy Tai-Chi (No PDUs)

Join Barbara Brewer, COTA/L

Tai-Chi is a balance activity, which tones the body, increases breathing capacity, lowers stress level, improves organ function, and corrects poor posture. This is energizing for the body, mind, and spirit to start the day.

11:30am–2:15pm

E Expo Hall Hours

Only three hours for all these activities! Grab a quick 'to go' lunch (separate advanced purchase required—only \$15) in the Expo Hall, visit exhibitors you didn't see on Friday evening (be sure to play Expo Hall Bingo/must be present to win), view the posters for PDUs, and more!

5:45pm–7:00pm

F President's Reception and Dance Party!

All Conference attendees are invited to relax and network at this event (no-host bar). Come meet OTAC and AOTA leaders, and presenters. DJ and dance floor, photo booth.
Sponsor: CSU, Dominguez Hills

AGENDA: SATURDAY, OCTOBER 27

8:15am–9:45am

52 State Legislative and Regulatory Updates (1.5 PDU)

Sabrena McCarley, MBA-SL, OTR/L, CLIPP; Chuck Willmarth, CAE, AOTA Chief Officer-Health Policy and State Affairs; Lauren Lopez, MA, OTR/L; Capitol Advocacy Lobbyist Ivan Altamura, JD

Join some of our leading state issues advocates from OTAC and AOTA for a critical briefing on the latest legislative and regulatory changes impacting the occupational therapy profession. This year we sponsored two of our own bills as well as strongly advocated for amendments to a third. Come learn more about these issues and others on the horizon to build your capacity as a knowledgeable advocate for the profession.



8:15am–9:45am

53 The Physiology of Safety and Danger (1.5 PDU)

Aimee Levine Dickman, MA, OTR/L, SEP

Get to know Porges' Polyvagal Theory and how the autonomic nervous system can either contribute to social engagement or isolation. This will inform how you see and work with your clients.

8:15am–9:45am

54 Lifestyle Redesign®-inspired Program for Obesity (1.5 PDU)

Leslyn Keith, OTD

Occupational therapy practitioners can be an integral part of the team to combat the obesity epidemic. Improve client outcomes by providing a cost-effective evidence-based Lifestyle Redesign®-inspired program for your patients who are overweight and obese.

8:15am–9:45am

55 Feeding, Eating, and Swallowing in School-based Practice (1.5 PDU)

Winifred Schultz-Krohn, PhD, OTR/L, BCP, FAOTA

Students with feeding, eating, and swallowing problems often face challenges in learning and participating in school activities. School-based occupational therapy services can support participation in the educational program by fostering improved feeding and eating skills. **CBOT Advanced Application pending.**

8:15am–9:45am

56 NBCOT Student Knowledge Bowl (STUDENT TRACK - NO PDU)

Julie B. Kornbluth, MA, OTR/L

Ten teams of students (4 on each team plus 1 alternate) will have the opportunity to "compete" for the National Board Certification for Occupational Therapy (NBCOT) examination in a fun and competitive atmosphere in real time. Test construction, format, and test taking strategies will be highlighted. All competing students must be registered for the Annual Conference. To sign up for a team slot, email shannon@otaonline.org. All attendees will benefit even if not on a team.

8:15am–11:30am

57 Medication Self-management for Patient Care with Resources/Apps (3 PDU)

Shan-Pin Fanchiang, PhD, OTR/L

Using the medication self-management steps (AOTA Medication Management document, 2017), attendees will participate in cases to analyze, assess, and incorporate resources/mobile apps for clinical practice.

8:15am - 11:30am

58 Cultural Fluidity: Application and Relevance in Clinical Practice (3 PDU)

Bonnie Nakasuji, OTD, OTR/L, FAOTA; Erin O'Donnell, OTD, OTR/L; Kendall Tillman, OTS; Andrea Weller, OTS

Cultural fluidity was previously proposed as the 'becoming' process toward client-centeredness. This presentation will highlight some practical and culturally fluid methods that allow for transformed

perspectives that help practitioners better understand, connect, and serve their clients.

8:15am–11:30am

59 SoulPlay: Creative Empowerment to Change (3 PDU)

Peggy Barrett, OTR/L, LMFT

The purpose of this presentation is to gain knowledge about the power of play and its properties, and learn the tools that evoke change. As occupational therapy practitioners we are the catalyst for change and healing with our patients/clients. The use of play empowers our patients to take risks and explore their world from a new perspective no matter what age. Erikson's stages of life will be related to play and how we evolve through an awareness of the spontaneity of play.

8:15am–5:45pm

60 Optimizing Pediatric Outcomes by Combining Sensory Integration with Other Approaches (6 PDU)

Bryant Edwards, OTD, MA, OTR/L, BCP, MPH; Clare Giuffrida, PhD, MS, OTR/L, C/NDT, FAOTA; Mary Hallway, OTR/L, C/NDT; Erna Imperatore Blanche, PhD, OTR/L, FAOTA; Lisa Test, OTD, OTR/L

This workshop focuses on optimizing pediatric outcomes by combining sensory integration with other interventions using a systematic approach to delivery of services to children with developmental disabilities, e.g. autism, cerebral palsy, and sensory processing disorders.

8:15am–5:45pm

61 Introduction to Therapeutic Applications of Kinesio® Tape (6 PDU)

Paul Penoliar, OTD, OTR/L, C/NDT

The workshop is designed to introduce participants to the assessment and therapeutic application techniques of the Kinesio® Taping method. The instructor will discuss the fundamental concepts of the methods for Kinesio® Taping and the unique properties and use of Kinesio® Tape. Lecture will describe the history, science, and theory of stimulus transmission through skin and resulting therapeutic benefit across efferent and afferent systems. The lecture will analyze epidermis, dermis, fascia, and muscle corrections accomplished by Kinesio® Tape. The six-hour workshop will primarily consist of hands-on lab modules focused on taping procedures for mechanical, tendon, ligament and circulatory/lymphatic corrections for various conditions. The course instructor will evaluate each participant's techniques/skills learned throughout each module to determine proficiency. **Limit: 20 attendees. Materials fee: \$50.**

10:00am–11:30am

62 Exploring the Emerging Niche of First-generation College Students (1.5 PDU)

Rashelle Nagata, OTD, OTR/L; Jennifer Hong, OTS

Discover how occupational therapy practitioners can optimize the functioning of college students who are the first in their families to attend a post-secondary educational institution. Discussion will include strategies for enhancing college student health and wellness.

10:00am–11:30am

63 You and Your License: For all OT Practitioners (1.5 PDU)

Richard Bookwalter, OTR/L; Sharon Pavlovich, MAM, COTA/L; Heather Martin, CBOT Executive Officer

Come learn about the latest regulatory changes affecting occupational therapy licensees. Meet California Board of Occupational Therapy members, learn about important statutes/regulations, and hear about some of the most frequent violations and how you can avoid them. Protect your license, your profession, and your career with this invaluable information.



AGENDA: SATURDAY, OCTOBER 27

10:00am–11:30am

64 Reducing Hospital Readmissions Using Lifestyle Redesign®: A Pilot Study (1.5 PDU)

Elizabeth Gomes, MS, OTR/L; Eric Duarte, OT/L

This presentation will present the initial results of a pilot study based in an adult day care setting using Lifestyle Redesign® principles to promote health and well-being among those most at risk for frequent hospital admissions. The goal of this program is to help clients improve health-related quality of life through improving occupational engagement and education.

10:00am–11:30am

65 Get Your Groove Back: Occupational Engagement for Practitioners (1.5 PDU)

Ellen Wlekinski Collins, MOT, OTD, OTR/L, CBIS; Shannon Kelly, MS, OTR/L

This hands-on presentation will renew your passion and energy for occupational therapy. Join us for dynamic conversation with an EBP backbone, so we can help you bring your best self to work every day.



10:00am–11:30am

66 Expanding Roles for OT in School-based Practice by Understanding the Legislative Process (1.5 PDU)

Lisa Test, OTD, OTR/L; Erin Dolin, EdD, OTR/L; Sabrena McCarley, MBA-SL, OTR/L, CLIPP, RACT-CT; Cherylin Lew, OTD, OTR/L; Julie Bissell, OTD, OTR/L; Natalie Loera, MA, OTR/L, CLIPP, RAC-CT; Lauren Lopez, MA, OTR/L

Occupational therapists (OT) and physical therapists are the only IDEA-related service professionals without a school credential. Become familiar with the history and current roles of OT in the schools. Understand the organizational structure of the educational system and the legislative process for continued advocacy and professional growth.



10:00am–11:30am

67 Speak Easy: Taking Your Presentation Skills from Cringe-worthy to Confident (STUDENT TRACK – NO PDUs)

Judy Hopkins, OTD, OTR/L, CLE; Rani Waterman, OTD, OTR/L, AMPS

As occupational therapy practitioners are integrated into more disciplinary teams, it is imperative we are able to communicate effectively, confidently, and, most importantly, persuasively.



11:30am–2:15pm

E Expo Hall Hours

Only three hours for all these activities! Grab a quick 'to go' lunch (separate advanced purchase required – only \$15) in the Expo Hall, visit exhibitors you didn't see on Friday evening (be sure to play Expo Hall Bingo/must be present to win), view the posters for PDUs, and more!

2:30pm–4:00pm

70 OT Issues Around the Country: The National Perspective and the View from Sacramento (1.5 PDU)

Chuck Willmarth, CAE, AOTA Chief Officer-Health Policy and State Affairs; Sabrena McCarley, MBA-SL OTR/L, CLIPP; Capitol Advocacy Lobbyist Ivan Altamura, JD

Attendees will hear from insiders at the state and national levels on important policy issues impacting the occupational therapy profession. From the Affordable Care Act to Medicaid and Medicare, OT practitioners need to understand how policy developments at the national level may impact practice in California. These seasoned advocacy professionals will provide invaluable and exclusive information.



2:30pm–4:00pm

71 Innovative Investigations at a Family Homeless Shelter (1.5 PDU)

Darla Gary, BA, OTS; Kacie Conn, BS, OTS; Rachel Bishop, BA, OTS; Kaylene de Bord, BS, OTS; Samantha Santos-Cucalon, BA, OTS; Susan Hannibal, BS, OTS; Moderator: Winifred Schultz-Krohn PhD, OTR/L, BCP, FAOTA

This panel will present two innovative investigations implemented at a Northern California family homeless shelter to support homeless mothers. Two different theoretical models were used to guide the occupational therapy services in this unique setting. Research supported by CFOT funding.

2:30pm–4:00pm

72 Occupational Therapy Primary Care Consultations for the College Student Population (1.5 PDU)

Kelcie Kadowaki, MA, OTR/L; Chantelle Rice Collins, OTD, OTR/L, CDE

This presentation will focus on efforts to increase the visibility and accessibility of occupational therapy services for the college student population, specifically through a primary care, consultative format. Outcomes resulting from this emerging model will be presented to generate discussions on how to address the health, lifestyle, and chronic disease management needs of our undergraduate and graduate student populations.

2:30pm–4:00pm

73 Assessing Family Wellness Using an Occupational Mandala Profile (1.5 PDU)

Sharon Bertrand, OTR/L; Thorne Bertrand

Come learn to analyze occupations of daily living and mind/body/spirit/life balance in children and parents using the illustration of an Occupational Profile Mandala. Research supports occupational therapy and occupational therapy evaluations include an occupational profile per the 2017 AMA manual.

2:30pm–4:00pm

74 NBCOT: Strategies for Certification Success (STUDENT TRACK – NO PDUs)

Shaun Conway, OTR

Come connect with NBCOT and hear about the best approaches to achieve your goal for occupational therapy certification.

2:30pm–4:00pm

75 Analyzing Social Media's Influence on School-based Practitioners (1.5 PDU)

Jayson Davies, MA, OTR/L; Abby Parana, MS, OTR/L

Online blogs, social media, and ads have changed the way occupational therapy practitioners find evidence and treatment activities. In this session, we will look at how these factors influence decisions and how we can use it to our advantage.

2:30pm–5:45pm

76 Residency and Fieldwork Models in Primary Care (3 PDU)

Ashley Halle, OTD, OTR/L; Jessica Choi, MA, OTR/L; Laura Cox, MA, OTR/L; Cecilia Tran, MA, OTR/L

This session will examine different models of fieldwork and doctoral residencies in primary care, a role-emerging setting, including at an academic medical center, a federally qualified health center, and at Kaiser Permanente. Opportunities and challenges will be explored.

2:30pm–5:45pm

77 But I Thought I Was Being Ethical! (3 PDU)

Lora Woo, OTD, OTR/L

Today's healthcare environment presents ethical challenges that practitioners may not be aware of as problematic. Heighten your awareness of possible ethical dilemmas and how to handle these situations through discussion of sample case scenarios.



AGENDA: SATURDAY, OCTOBER 27

2:30pm–5:45pm

78 Cognitive Interventions for Children and Adolescents (3 PDUs)

Diana Gantman Kraversky, OTD, MS, OTR/L, AP

This evidence-based course will explain the role of cognitive approaches, such as CO-OP and Cog-Fun interventions in enabling occupational performance. An overview of the theoretical perspectives that guide cognitive interventions and effectiveness of cognitive approaches will be discussed.



4:15pm–5:45pm

79 Build Your Capacity as an Advocate for the Profession (1.5 PDUs)

Sabrina McCarley, MBA-SL, OTR/L, CLIPP; Capitol Advocacy Lobbyist Ivan Altamura, JD

This session will provide an in-depth presentation about OTAC's new grassroots advocacy initiative, GO-TO-OT. This localized initiative is designed to support the occupational therapy profession in building collaborative and positive relationships with elected officials. A hands-on component of this session will include how to subscribe to your local legislator's alerts and engage with his/her local district office. Come learn how you can build your capacity to be a powerful advocate for the profession.



4:15pm–5:45pm

80 Are You Preparing Your Clients and Their Families for the Next Fire, Earthquake, Flood, Disaster or Personal Emergency? (1.5 PDUs)

Mary Evert, MBA, OTR/L, FAOTA, ScD (Hon)

OTs have an obligation to prepare for fire, earthquake, flood, or other disaster and emergency response plans with clients for their needs and environment. OT's roles and practices within an emergency/disaster management framework plus strategies to improve professional and team competencies in this critical area of patient safety, risk reduction, recovery and quality of life will be explored.

4:15pm–5:45pm

81 Understanding Leadership Development Through OT Student Externships (1.5 PDUs)

Seung Woo Hwangbo, MS; Daniel Park, OTD, OTR/L

Evaluation data investigating the leadership development process in master's-level occupational therapy students who have participated in both international and local (domestic) short-term externship experiences will be presented.

4:15pm–5:45pm

82 Breaking Down Patient Care Barriers Through Caregiver Empowerment (1.5 PDUs)

Brandon Seigel

Clinical outcomes are being regularly compromised because of "patient care" barriers. In this interactive workshop, practitioners of all levels of experience will learn strategies and secrets in breaking down common patient care barriers through caregiver empowerment.

4:15pm–5:45pm

83 Utilizing DIR-FCD Principles in a School Setting (1.5 PDUs)

Amy Jensen, MA, OTR/L; Lauren Davis, MS; Ariel Hegedus, MA, CCC-SLP

DIR-FCD is a development-based model used in early intervention. An interdisciplinary nonpublic school team applied this model to students ages 4-22 with moderate-severe disabilities. Learn preliminary outcomes, hear case studies, and engage directly with the model.

4:15pm–5:45pm

84 Neuroscience Behind Spirituality and Its Role in OT (STUDENT TRACK – NO PDUs)

Boguslawa Syrotiak, MSOT, MBA, OTR/L

Many structures of the human brain are activated by engaging in occupations such as prayer, which coupled with neuroplasticity can play a powerful role in changing the physical brain and inducing an adaptive response.

5:45pm–7:00pm

F President's Reception and Dance Party!

All Conference attendees are invited to relax and network at this event (no-host bar). Come meet OTAC and AOTA leaders, presenters, and other honorees, including OTAC past presidents. DJ and dance floor, photo booth, and more!

Sponsor: CSU, Dominguez Hills



AGENDA: SUNDAY, OCTOBER 28

Sunday – Schedule

7:15am–5:00pm

Sunday Registration Hours

Pre-registration for Conference is strongly encouraged.
Attendance at sessions and activities is first-registered, first-served.

7:30am–9:15am

G OTAC Annual Meeting and Breakfast (.5 PDU)

This event is included in your Sunday registration fee. Come hear inspirational presentations about the future of OTAC and occupational therapy in California by OTAC President Heather J. Kitching, OTD, OTR/L. Featured presenter is fitness success coach Joseph Hawthorne, ACSM-CPT, RBT, AKC.



9:30am–11:00am

90 Providing Holistic Hand Therapy to Patients with PTSD (1.5 PDUs)

Miki Bernal, MA, OT/L, CHT; Myungjae Lee, OTS

What does holistic hand therapy look like when working with patients with upper extremity impairment and post traumatic stress syndrome (PTSD)? In this session, we will discuss how to properly address and provide wholesome occupational therapy in hand therapy settings.

9:30am–11:00am

91 Integrating OT into Court-mandated Forensic Psychiatric Treatment (1.5 PDUs)

Laura Ferrari, OTR/L; Celso Delgado, Jr., OTD, OTR/L, BCMH

This presentation explores how occupational therapy serves the unique needs of forensic psychiatric outpatients served by the Department of State Hospital's Conditional Release Program, specifically focusing on Los Angeles' Forensic Community Treatment Program (FCTP).

9:30am–11:00am

92 How Dying Trajectories Guide Occupation-based Interventions (1.5 PDUs)

Janice Kishi Chow, DOT, OTR/L

This course will describe dying trajectories for cancer, organ failure, and frailty; discuss how these trajectories shape occupational needs; and enable development of occupation-based interventions for clients with life-limiting illness.

9:30am–11:00am

93 SNFs: Return to Our Roots to Save Our Future (1.5 PDUs)

Elizabeth Gomes, MS, OTR/L

Many occupational therapists and assistants working in SNFs resort only to clinic activities with patients, leading to refusals and burnout. Rediscover the value of occupation and simple ways to ensure that patients see the value of OT.

9:30am–11:00am

94 Emerging Motherhood: Blending Occupational Therapy and Parenting (1.5 PDUs)

Caitlin Greene, OTD, OTR/L; Kristin Nxumalo, OTD, OTR/L

This session will cover how to use occupational therapy tenants and practice to balance being a clinician and expectant mother, navigate the acute care environment, and continue to advocate for your patients, yourself, and your growing family.

Sunday – Special Activities

7:15am–5:00pm

Sunday Registration Hours

Pre-registration for Conference is strongly encouraged.
Attendance at sessions and activities is first-registered, first-served.

7:30am–9:15am

G OTAC Annual Meeting and Breakfast (.5 PDU)

This event is included in your Sunday registration fee. Come hear inspirational presentations about the future of OTAC and occupational therapy in California by OTAC President Heather J. Kitching, OTD, OTR/L. Featured presenter is fitness success coach Joseph Hawthorne, ACSM-CPT, RBT, AKC.

12:30pm–1:15pm

OT Practice Café/Lunch – \$18

Come grab a "picnic" lunch and sit at your OT hot topic table of choice. Advance purchase lunch and be eligible to win \$50 in gift cards.

9:30am–12:30pm

95 Occupational Therapy and Lifestyle Medicine: An Evidence-based Response to Management of Non-communicable Diseases (3 PDUs)

Wayne Dysinger, MD, MPH; Dragana (Anna) Krpalek, PhD, OTR/L; Donna Mann, OTD, BSOT, Dip ABLM, OT/L (WA)

This presentation will provide an overview of lifestyle medicine and the role of occupational therapy as a preventive and restorative practice. Topics will include the core competencies of lifestyle medicine, theories to support occupational therapy practice from a lifestyle medicine approach and strategies for implementation of lifestyle medicine into occupational therapy practice. A team-based approach will be emphasized.

9:30am–12:30pm

96 Motor Learning Applications in the School-based Setting (3 PDUs)

Anne Bravo, MS, OTR/L; Shannon Brady, PT, DPT, PCS

This presentation will focus on the use of therapeutic practice, grading motor activities, instruction and feedback. There will be a focus on differentiating treatment for children with intellectual disabilities in the school-based setting.

11:00am–12:30pm

97 Compassionate Listening Development in an Adolescent Urgent Care (1.5 PDUs)

Ingrid Leu, OTD, OTR/L; Danielle Burt, OTS; Summer Dabbs, OTS; Jennifer Nguyen-Poon, OTS

Attendees will explore a student-developed compassionate care training program to improve the environment of a mental health urgent care for adolescents and examination of the program development process.

11:00am–12:30pm

98 OT and an Adult with ASP and SPD: Partnering for Functional Outcomes (1.5 PDUs)

Juliana Gutierrez, MA, OTR/L; Bonnie Nakasuji, OTD, OTR/L, FAOTA; Jennifer St. Jude, BSW

This presentation will focus on an adult and her on-going journey with autism spectrum disorder (ASP) and sensory processing disorder (SPD) toward functional self-regulation and functional participation and the importance of how partnering with her occupational therapy practitioner supported her progress.

11:00am–12:30pm

99 Lesbian, Gay, Bisexual, Transgender (LGBT) Seniors: Including the Invisible Population (1.5 PDUs)

Daniel Swiatek, OTD, OTR/L; Sabrena McCarley, MBA-SL, OTR/L, CLIPP, RAC-CT

LGBT seniors face worries related to identity preservation and discrimination that may not be found in other populations of seniors. Occupational therapy practitioners can demonstrate compassionate care by taking some simple steps when working with this vulnerable population.

AGENDA: SUNDAY, OCTOBER 28

11:00am–12:30pm

100 Family-centered Intervention for Individuals with Dementia (1.5 PDU)

Heather Roese, OTD, MOT, OTR/L

Occupational therapy's role in providing family-centered care for persons with dementia will be addressed. Participants will explore development care plans for persons with dementia to support occupational performance using rehabilitative, habilitative, and compensatory frameworks.

11:00am–12:30pm

101 Inclusion in Childcare Settings Utilizing Trauma-informed Care Model (1.5 PDU)

Arezou Salamat, OTD, OTR/L; Scott Chikuami, OTS; Samantha Parrnelli, OTS

The consequences of experiencing early childhood trauma could marginalize and segregate a child from typical experiences, including participation in a childcare setting. Occupational therapy practitioners will learn how to work directly with childcare providers to promote inclusion.

12:30pm–1:15pm

H OT Practice Café/Lunch – \$18

Come grab a "picnic" lunch and sit at your OT hot topic table of choice. Advance purchase lunch and be eligible to win \$50 in gift cards.

1:30pm–3:00pm

110 Children's Lower Body Dressing Made Fun and Easy (1.5 PDU)

Lynette Ingram, OTR/L; Rayya Jones

This presentation will demonstrate easy no-sew and low-sew methods to adapt commercially available clothing for children with special health care needs and review readily available no-tie lacing options. (Participants are asked to bring a pair of pants or shorts to be adapted. Velcro, glue, needles and thread, and scissors will be supplied by the presenters).

1:30pm–3:00pm

111 Multidisciplinary Team Approach and Therapeutic Intervention of Infants and Toddlers with Brachial Plexus Palsy (1.5 PDU)

Vicky Vu, MA, OT/L, MBA, BCP; Lauren Bojorquez, PT, DPT

Understanding the intricacies of nerve regeneration with infants and children with brachial plexus palsy plays an important role in a multidisciplinary team. This session will review guidelines in determining timing of possible nerve reconstruction or muscle transfers as well as the therapeutic interventions pre- and post-surgical intervention.

1:30pm–4:45pm

112 Awakening the Leader Within: Skilled Use of Advocacy Interventions at the Person, Population, and Community Levels (3 PDU)

Virginia (Ginny) Stoffel, OT/L (WI), BCMH, FAOTA

Participants will examine their core leadership values guiding their professional development. They will generate ideas about how these can be skillfully applied to advocacy interventions at the person, population, and community levels in order to expand the focus of occupational therapy as it maximizes health, well-being and quality of life. Participants will develop a plan for advocacy efforts that promote effective solutions to facilitate participation in everyday living, as part of defining their leadership mission.



Did You Know?

Attendees who stay through Sunday afternoon sessions are eligible for valuable prize drawbgs.

1:30pm–4:45pm

113 Kawa Model: Deepening Your Practice (3 PDU)

Praveen Injeti, MA, MFT, OT/L; Heather Javaherian-Dysinger, OTD, OTR/L

The Kawa Model can be used in a variety of clinical settings. We will describe and illustrate Kawa in behavioral health, outpatient rehab, and community-based practice to transform patient lives, intervention, and documentation.



1:30pm–4:45pm

114 Understanding and Maintaining Compassion Amidst Suffering (3 PDU)

Don Gordon, PhD, OTR/L; Robin Schlundt Bodien, MA, OTR/L

Compassion is an essential component of authentic practice. This course will explore the research related to "emotional labor," how our minds and bodies are truly connected, and provide practical tools for resiliency and building compassion.

1:30pm–4:45pm

115 Oculomotor and Visual Field Impairments after Neurological Injury (3 PDU)

Annaliese Espinosa, MA, OTR/L

This presentation will provide a general overview of common assessments used after neurological injury and an in-depth understanding of evaluation and treatment related to oculomotor dysfunction, including diplopia and convergence insufficiency, and peripheral field impairments.

1:30pm–4:45pm

116 Overcoming the Challenges of Working in a SNF (3 PDU)

Sabrena McCarley, MBA-SL, OTR/L, CLIPP, RAC-CT; Ernie Escovedo, OTD, OTR/L, CES, CA

Working in a skilled nursing facility (SNF) poses many daily challenges from productivity expectations to treating high level patients to very medically complex patients. This often leaves practitioners struggling with how to manage their day. This course will discuss the challenges that practitioners face and provide resources on how to overcome these challenges.

3:15pm–4:45pm

117 Does OT SI Enhance Play in Children?: Scoping Review (1.5 PDU)

Rebecca Wall, BS, OTS

This presentation on a scoping review will look at the question: How does sensory integration (SI) therapy positively enhance the play characteristics of children? The recent research, which has been conducted discussing the positive as well as the null effects that SI interventions can have on a child's play characteristics, will be discussed as well as the individual characteristics that were seen to improve in children post sensory integration intervention.

3:15pm–4:45pm

118 Homeschooling Research: OT Screening Tool and Parent Preferences (1.5 PDU)

Genie Charvet, OTD, OTR/L; Yasaman Danesh-Panahi, OTS; Deborah Haratounian, OTS

Research on the Homeschool OT Screener and the preferences of homeschoolers for occupational therapy (OT) services will be presented. Myths about homeschoolers and ways to increase the utilization of OT services by homeschoolers will be explored.

These influencers invite you to come explore building your own capacity.

CFOT Honored Lecturer

***Jerilyn (Gigi) Smith,
PhD, OTR/L, FAOTA***

**The Power of Selective “Yes”
(.5 PDU)**

Our professional and personal tapestry is woven by the opportunities and experiences in our lives that we either embrace or pass by. Saying “yes” (and selectively saying “no”) gives us the power to create our unique occupational performance pattern of living, which can lead to realizing and participating in a life fully lived.

Friday, October 26, 2018 • 11:30am–1:00pm



Jerilyn (Gigi) Smith,
PhD, OTR/L, FAOTA

Friday Keynote Address

***Virginia (Ginny)
Stoffel, PhD, OT/L
(WI), BCMH, FAOTA***

**Building OT Capacity with
Effective Leadership and
Skilled Advocacy
(.5 PDU)**

As we embark on occupational therapy’s second century, the need to cultivate and actively build capacity of all occupational therapy practitioners, educators, researchers, managers and entrepreneurs towards leadership and advocacy has never been greater. To accomplish this, skilled use of advocacy approaches to intervention, legislative, and regulatory initiatives must be modeled, operationalized, and shaped to address the evolving distinct culture and leadership of the profession, in the United States and globally.

Friday, October 26, 2018 • 4:15pm–5:15pm



Virginia (Ginny) Stoffel,
PhD, OT/L (WI),
BCMh, FAOTA

Sunday Keynote Address

***Joseph Hawthorne,
ACSM-CPT, RBT, AKC***

**Building Your Capacity:
Individual Strength and
Sustainability (.5 PDU)**

Joseph Hawthorne, ACSM-CPT, RBT, AKC, owner of Pasadena’s Copper Moose Fitness and strength, conditioning, and nutrition success coach, will discuss health and well-being as an achievement we can pursue anytime. He will address his personal philosophy of enhancing the capacity of an individual for community health and living life well.

Sunday, October 28, 2018 • 7:30am–9:15am



Joseph Hawthorne,
ACSM-CPT, RBT, AKC

Sunday President's Address

OTAC Annual Meeting and
Breakfast

***Heather J. Kitching,
OTD, OTR/L,
OTAC President***

Come hear an inspirational message about OTAC's initiative to build capacity for our members, the profession, and our Association.

Sunday, October 28 • 7:30am–9:15am



Heather J. Kitching,
OTD, OTR/L
President

PRESENTERS BY NAME

Presenters by Last Name

Ivan Altamura, JD.....	18, 19, 20
Madison Aguirre, OTR/L.....	16
Asha Asher, MA, OTR/L, SCSS, FAOTA.....	15
Esther Bae, MA, OT/L.....	15
Peggy Barrett, OTR/L, LMFT.....	18
Miki Bernal, MA, OT/L, CHT.....	21
Sharon Bertrand, OTR/L.....	19
Thorne Bertrand.....	19
Rachel Bishop, BA, OTS.....	19
Julie Bissell, OTD, OTR/L, ATP.....	19
Lauren Bojorquez, PT, DPT.....	22
Richard Bookwalter, MS, OTR/L, CBOT.....	18
Erwin Borja, MA, OTR/L.....	15
Kasey Brady, MOTS.....	16
Shannon Brady, PT, DPT, PCS.....	21
Anne Bravo, MS, OTR/L.....	21
Barbara Brewer, COTA/L.....	14,17
Danielle Burt, OTS.....	21
Vivian Chang, MA, OTR/L.....	15
Genie Charvet, OTD, OTR/L.....	22
Scott Chikumi, OTS.....	22
Jessica Choi, MA, OTR/L.....	19
Janice Kishi Chow, DOT, OTR/L.....	21
Kacie Conn, BS, OTS.....	19
Shaun Conway, OTR.....	19
Cynthia Cooper, MFA, MA, OTR/L, CHT.....	14
Laura Cox, MA, OTR/L.....	19
Talitha Cox, MA, OTR/L.....	15
Rebecca Cunningham, OTD, OTR/L.....	13,14,16
Summer Dabbs, OTS.....	21
Yasaman Danesh-Panahi, OTS.....	22
Narayana Darst, BA.....	16
Jayson Davies, MA, OTR/L.....	19
Lauren Davis, MS.....	20
Kaylene de Bord, BS, OTS.....	19
Celso Delgado, Jr., OTD, OTR/L, BCMH.....	15,21
Erin Dolin, EdD, OTR/L.....	19
Eric Duarte, OT/L.....	19
Wayne Dysinger, MD, MPH.....	21
Emily Ecklund, MOT, OTR/L.....	15
Bryant Edwards, OTD, MA, OTR/L, BCP, MPH.....	18
Ernie Escovedo, OTD, OTR/L, CES, CA.....	22
Annaliese Espinosa, MA, OTR/L.....	22
Mary Evert, MBA, OTR/L, FAOTA, ScD (Hon).....	20
Shan-Pin Fanchiang, PhD, OTR/L.....	18
Laura Ferrari, OTR/L.....	21
Katherine Fischer, OTS.....	14
Lucia Florindez, MA.....	15
Judith Freeman, MA, OTR/L.....	13
Darla Gary, BA, OTS.....	19
Clare Giuffrida, PhD, MS, OTR/L, C/NDT, FAOTA.....	18
Kimberly Goldstein, MA, OTR/L.....	16
Elizabeth Gomes, MS, OTR/L.....	19,21
Don Gordon, PhD, OTR/L.....	22
Kathleen Gorman, OTD, OTR/L.....	15
Caitlin Greene, OTD, OTR/L, CLT.....	21

Vijay Gupta.....	8, 11, 14, 16
Juliana Gutierrez, MA, OTR/L.....	21
Flavio Guzman Magaña, BA.....	15
Ashley Halle, OTD, OTR/L.....	19
Mary Hallway, OTR/L, C/NDT.....	18
Susan Hannibal, BS, OTS.....	19
Deborah Haratounian, OTS.....	22
Joseph Hawthorne, ACSM-CPT, RBT, AKC.....	3,6,9,12,21,23
Kate Hayner, EdD, OTR/L.....	17
Ariel Hegedus, MA CCC-SLP.....	20
Sherry Hite, MOT, OTR/L.....	15,16
Jennifer Hong, OTS.....	18
Judy Hopkins, OTD, OTR/L, CLE.....	19
Seung Woo Hwangbo, MS.....	20
Antonietta Iannaccone, OTS.....	14
Erna Imperatore Blanche, PhD, OTR/L, FAOTA.....	18
Lynette Ingram, OTR/L, SWAL, CLE.....	22
Praveen Injeti, MA, MFT, OT/L.....	22
Tracy Jalaba, OTD, OTR/L.....	16
Heather Javaherian-Dysinger, OTD, OTR/L.....	3, 7, 8, 13, 22
Amy Jensen, MA, OTR/L.....	20
Maureen (Mo) Johnson, MS, OT/L, C/NDT.....	16
Rayya Jones.....	22
Katie Jordan, OTD, OTR/L.....	15
Kelcie Kadowaki, MA, OTR/L.....	19
Rena Katrikh, OTD, OTR/L.....	16
Leslyn Keith, OTD.....	18
Shannon Kelly, MS, OTR/L.....	19
Lynn Kim, OTD, OTR/L.....	16
Heather Kitching, OTD, OTR/L.....	6, 9, 21, 23
Julie B. Kornbluth, MA, OTR/L.....	18
Diana Gantman Kravetsky, OTD, MS, OTR/L, AP.....	20
Dragana (Anna) Krpalek, PhD, OTR/L.....	21
Denise Lau, MOT, OTR/L.....	15
Gyeombi Lee, OTS.....	15
Myungjae Lee, OTS.....	21
Ingrid Leu, OTD, OTR/L.....	21
Aimee Levine Dickman, MA, OTR/L, SEP.....	18
Cherylin Lew, OTD, OTR/L.....	19
Jessica Lin, OTS.....	14
Natalie Loera, MA, OTR/L.....	19
Lauren Lopez, MA, OTR/L.....	18, 19
Zoe Mailloux, OTD, OTR/L, FAOTA.....	13
Donna Mann, OTD, BSOT, Dip ABLM, FAOTA, OT/L (WA).....	21
Marissa Marchioni, OTD, OTR/L.....	13,16
Heather Martin.....	18
Sabrena McCarley, MBA-SL, OTR/L, CLIPP, RAC-CT.....	15,18,19, 20, 21,22
Guy McCormack, PhD, OTR/L, FAOTA.....	16
Jenna Mele, OTD, OTR/L, CCM, RYT.....	13
Zari Morales, OTS.....	15
Rashelle Nagata, OTD, OTR/L.....	18
Bonnie Nakasuji, OTD, OTR/L, FAOTA.....	18,21
Jennifer Nguyen-Poon, OTS.....	21
Karen Ni, OTD, OTR/L.....	13

Raymond Nubla, MOTS.....	16
Kristin Nxumalo, OTD, OTR/L, CLT.....	21
Erin O'Donnell, OTD, OTR/L.....	18
Jean Pacifico-Banta, OTD, OTR/L.....	16
Abby Parana, MS, OTR/L.....	19
Daniel Park, OTD, OTR/L.....	20
Samantha Parrnelli, OTS.....	22
Sharon Pavlovich, MAM, COTA/L.....	16,18
Paul Penoliar, OTD, OTR/L, C/NDT.....	18
Fabiola Prasetio, OTS.....	15
Samia Rafeedie, OTD, OTR/L, BCPR, CBIS.....	14
Douglas Rakoski, OTD, OTR/L, ATP.....	14
Lindsey Reeves, OTD, OTR/L.....	14
Chantelle Rice Collins, OTD, OTR/L, CDE.....	19
Joyce Rioux, EdD, OTR/L, SCSS.....	15
Heather Roese, OTD, OTR/L.....	15, 22
Aja Roley, MA, OTR/L.....	13
Arezou Salamat, OTD, OTR/L.....	22
Samantha Santos-Cucalon, BA, OTS.....	19
Robin Schlundt Bodien, MA, OTR/L.....	22
Winifred Schultz-Krohn, PhD, OTR/L, BCP, FAOTA.....	15,18,19
Brandon Seigel.....	13,16,20
Erica Sequeira, MOTS.....	16
Kathleen Shanfield, MS, OTR/L, ATP.....	15
Jerilyn (Gigi) Smith, PhD, OTR/L, FAOTA.....	8, 11,14,16,23
Linsey Smith, OTD, OTR/L.....	16
Joann Sorg, MS, OTR/L.....	16
Jennifer St. Jude, BSW.....	21
Marlene Steele, COTA/L.....	15
Annie Stepha, MS, OTR/L.....	13
Virginia (Ginny) Stoffel, PhD, OT/L, (WI), BCMh, FAOTA.....	3,6,8,12,14,17,22,23
Esther Suh, MA, OT/L.....	15
Julie Sullivan, OTR/L, C/NDT.....	13
Daniel Swiatek, OTD, OTR/L.....	21
Boguslawa (Bo) Syrotiak, MSOT, MBA, OTR/L.....	20
Tracy Tang, OTS.....	15
Lisa Test, OTD, OTR/L.....	16,18,19
Michelle Thakur, MOT.....	17
Heather Thomas, PhD, OTR/L.....	15
Kendall Tillman, OTS.....	18
Cecilia Tran, MA, OTR/L.....	19
Sue Trautman, MA, OTR/L.....	13
Laura Trimble, OTR/L.....	17
Marie Umeda, OTS.....	15
Ashley Uyeshiro Simon, OTD, OTR/L, MSCS..	16
Samantha Valasek, OTD, OTR/L.....	13,16
Vicky Vu, MA, OT/L, MBA, BCP.....	22
Rebecca Wall, BS, OTS.....	22
Rani Waterman, OTD, OTR/L, AMPS.....	19
Aaron Weis, OTD, OTR/L.....	14
Andrea Weller, OTS.....	18
Chuck Willmarth, CAE.....	18,19
Ellen Wleklinski Collins, MOT, OTD, OTR/L, CBIS.....	19
Lora Woo, OTD, OTR/L.....	19
Vanessa Yanez, MS, OTR/L.....	16

POSTER PRESENTATIONS

There are two groups. Poster presentations may be viewed only on **Saturday, October 27, 2018** – Group A: 11:30am–12:30pm; and Group B: 1:00pm–2:00pm in the Exhibit Hall. To earn PDUs, the **poster presenter(s) must initial your Certificate of Completion** form. You may earn .25 PDU for each poster with a maximum allowed of 2 PDUs for the two-hour session. *Sponsor: Stanbridge University*

Addressing Diabetes in Primary Care: Lifestyle Redesign® Approach

Maggie King, MA, OTR/L; Grace Cho, OTS; Elissa Lee, OTS

Animal-Assisted Interventions: Definitions and Implications for OT

Karen Ni, OTD, OTR/L

Assistive Technology and the Impact on Occupations

*Vherna Fernandez, OTS; Chantelle Bond, OTS;
Eizelle Barrientos, OTS; Chelsea Golding, OTS*

Autism and Occupation: Video Modeling for Maker Activities

*Laura Hess, PhD, OTR/L; Hannah Gibeson, OTS; Molly Smith, OTS;
Kelly Yerby, OTS; Brittany Yung, OTS*

Benefits of a Government-issued Phone for Forensic Mental Health

Malia Sako, OTS

Breastfeeding in the NICU: Surveying Occupational Therapy Practices

*Allison Smith, PhD, OTR/L, BCP; Erin Kastelz, OTS;
Alexandra Moini, OTS; Erica Strutner, OTS*

Burnout in Community Mental Health

Elizabeth Zepeda, OTS; Celso Delgado, Jr., OTD, OTR/L

Cognitive Assessments in Geriatric Rehabilitation

Anadee Nikte, MS, OTR/L

COPM Outcomes at Rancho: A Ten-year Retrospective

*Michele Berro, MA, OTR/L; Lisa Deshaies, OTR/L, CHT;
Luini Ornelas, MA, OTR/L*

Creating a Sensory Diet Toolkit for Parents and Caregivers

*Nicolette D'Esposito, OTS; Yvette Lozano, OTA; Sarah Pashby, OTS;
Natalie Carrillo, OTS; Julia Wilbarger, OTR/L*

Dating for College Students

*Justin Pring, OTS; Cristina Cummings, OTS;
Cathy Lynn Gonzales, OTS; Gabriela Saucedo, OTS*

EBP and PAMs at the Student Level

Erin Murray, OTD, OTR/L

Educators' Perspectives on Sex Education for Students with ID/DD

Jaclyn Rose, OTS

English Proficiency and Inpatient Rehabilitation Outcomes

*Erin Lubniewski, OTS; Drusilla Potts, OTS; Caitlin McAvoy, OTS;
Jerilyn (Gigi) Smith, PhD, OTR/L, FAOTA*

Evaluating Trends of Improvement in Rhythm Works Integrative Dance©

*Akemi Davies, MA, OTR/L; Aryana Behmardian, OTS;
Elizabeth Borre, CTRS, OTS; Brooke Gehris, OTS; Kelly Gehris, OTS*

Examining the Therapeutic Potential of Multisensory Environments

*Connie Chu, MA, OTR/L; Sharon Cermak, EdD, OTR/L;
Leah Stein Duker, PhD, OTR/L*

Experience of Homeless Mothers Engaged in Leisure Activities

*Kacie Conn, BS, OTS; Rachel Bishop, BA, OTS; Kaylene de Bord, BS,
OTS; Darla Gary, BA, OTS; Winifred Schultz-Krohn, PhD, OTR/L,
BCP, FAOTA*

Farewell to Falls Program Evaluation

*Sarah Alexander, OTS; Katherine Moore, OTS;
Jonathan Moore, OTS; Regina Kim, OTS*

Fostering Financial Management Skills with Homeless Teens

*Anna Hade Shaver, BA, OTS; Ani Abramhamian, BA, OTS; Kelsey
Baskovich, BS, OTS; Celeste Li, BA, OTS; Elisabeth Russ, MM, OTS*

Fragile X Syndrome and Family Occupations: Sertraline Treatment

*Decerie Mendoza, OTS; Tracy Ye, OTS; Martina Dualan, OTS;
Elena Javier, OTS*

Improv-based Intervention for Adults with Mental Disorder

Ronald Dallatorre, OTR/L

Increasing OTAC and Student Involvement to Support Professional Development

Sherry Younesi, OTAS

Infants at Risk for ASD: EI Focus Group Findings

*Lauren Hastings, MA, OTR/L; Grace Baranek, PhD, OTR/L, FAOTA;
Emily Schulze, OTD, OTR/L*

Integrating Occupational Therapy into Student Wellness at Caltech

Grace Ho, OTD, OTR/L; Ken Radomski, MA, OTR/L

Interventions Supporting Siblings of Children with ASD

Breanna Howell, MA, OTD, OTR/L

Mindfulness Meditation Effects on Spasticity in Stroke Survivors

David Saldana, BS, OTS

Mothers' Experiences with Infant Co-occupations after NICU Discharge

*Allison Smith, PhD, OTR/L, BCP; Megan Karpf, OTS;
Molly Jow, OTS; Morgan Jardon, OTS*

Newborn Brachial Plexus Injury Sling: An OT/PT Collaboration

Cindy Jaeger, OTR, MS; Sheila Shirazi, PT

Occupational Performance Coaching as an Ultimate Enabler

Diana Gantman Kraversky, OTD, MS, OTR/L, AP

Occupational Responses Following Partner Loss

*Carol Huang, OTS; Jane Song, OTS; Peter Behr, OTS;
Stephanie Sterner, OTS*

Occupational Therapy Students' Preparation Working with LGBT

Anicha Malloy, OTS; Kellie Khuu, OTS

Occupation-focused Work Readiness Program with Homeless Parents

*Kira Woods, OTS; Sanam Amini, OTS; Madeline Bauer, OTS;
Casey Honath, OTS*

POSTER PRESENTATIONS

OT in the Care of Same-day Spine Patients

Amy Brown, MA, OTR/L

Perceptions About the Value of Animal-assisted Therapy

Miriam Wasserman, OTR/L; Jessica Raimondo, OTR/L;
Leslie Walker, OTR/L

Sensory Modulation and Dementia: Drumming for Enhanced Performance

Naomi Wong, OTS; Heather August, OTS; Jacob Gantan, OTS;
Ivy Torres, OTS

Sleep and Socially Interactive Technology Use Among Adolescents

Lisa Benjamin, OTS; Cathlin Burkey, OTS; Torrey Blake, OTS;
Arlon Chau, OTS; Megan Chang, PhD, OTR/L

Social Problem-solving in Simulation Compared to Didactic Teaching

Sadie Phan, OTS; Rebeca Poore, OTS; Lily Nichols, OTS;
Alyssa Moore, OTS; Jerilyn (Gigi) Smith, PhD, OTR/L, FAOTA

Stress, Sensory Processing, and Sleep in Graduate Students

Tamara Turner, OTS, PAPHS; Megan Chang, PhD, OTR/L

Supporting Social Engagement of Youth with ASD in Science Museums

Casey Primeau, OTS

The Effectiveness of Occupational Therapy on Veterans with PTSD

Alison Ulie, OTS; Tracy Tang, OTS

Transition in Occupations of Refugees During Resettlement

Jennifer Daine, OTS; Adam Cahn, OTS;
Jacqueline Elizabeth Cantrell, OTS; Kimberley Keagan Banuelos, OTS

Turning the Tides: An OT Dive Instructor's Manual for Veterans with PTSD and Depression

Naomi Achondo, OTD, OTR/L; Anna Fearer, OTS;
Nancy Grundl, OTS; Erica Pueblos, OTS

Use of Sensory Modalities within Inpatient, Psychiatric Adolescents

Susana Wyatt, MA, OTR/L; Cristina Ranches, OTR/L

Using Motivational Interviewing to Enhance Student Professionalism on Fieldwork

Jeni Dulek, OTD, OTR/L, CFWE

Validity of Weekly Calendar Planning Activity: Student Edition

Sharon Cermak, EdD, OTR/L, FAOTA; Rashelle Nagata, OTD,
OTR/L; Jesse Zhao, OTS; Creig Smith, OTS

myotlicense—easy. one stop. professional. info. tracking.



Check Out this Free Service!

Why? Never miss your OT/OTA license renewal date or misplace a PDU certificate or forget to renew your professional memberships.

What? A web-based, easy-to-use, 'electronic filing cabinet' and professional management tool to help OT/OTA practitioners track professional information. **FREE** with regular OTAC membership. Or, sign up as a program subscriber.

How? Go to www.otaconline.org. Members: Click on 'Click here to get started' – next to myOTlicense logo. You will now be in the myOTlicense system. Log in and get started.

Questions? Leave a message on the myotlicense help desk at (855) 927-7737 or send a message to myotlicense@otaconline.org or check out the FAQs on the OTAC website www.otaconline.org (look for myOTlicense logo).

**for OTAC Members;
nonmembers can subscribe*



myotlicense

The use of member/licensee photos in the OTAC publications does not constitute an endorsement of products or services by the member/licensee

A web-based, easy-to-use, 'electronic filing cabinet' and professional management tool to help OT practitioners track professional information.

Never miss an important deadline or opportunity!

CONFERENCE-AT-A-GLANCE

Thursday, October 25, 2018

Registration – Check-In Hours for Thursday, Pre-Conference Institute
8:00am–9:30am and 12:00noon–2:00pm • Hilton Pasadena

9:00am	1 Addressing Sleep in Occupational Therapy: A 24-hour Approach (3 PDUs)	2 Building Skills for Engaging People Living with Dementia (3 PDUs)	3 Getting Comfortable With Feeding: You Can Do It! (3 PDUs)	4 The Private Practice Business Bootcamp (6 PDUs)
Noon	Lunch on Own			
1:00pm–4:00pm Session 7 to 5:00pm	5 OT and Pain Management in Acute Care (3 PDUs)	6 Opportunities for Incorporating Dogs into OT Practice (3 PDUs)	7 The Evaluation in Ayres Sensory Integration (EASI) (4 PDUs) (ends at 5:00pm)	4, cont The Private Practice Business Bootcamp (6 PDUs)
6:00pm–8:00pm	Registration Pick-up Available – If registered in advance			
6:30pm–8:00pm	A – Movie Night: A Path Appears (.5 PDU) – All Attend			

Friday, October 26, 2018

7:15am	Friday Registration (7:15am–5:00pm) • Pasadena Convention Center										
7:30am	B – Mind-Body Activity: Easy Tai-Chi • Pasadena Convention Center										
8:15am	10 Can Video Games Foster Engagement in Therapy? (1.5 PDUs)	11 Epilepsy Care: An Outpatient, Lifestyle Management Approach (1.5 PDU)	12 Bridging the Gap Between Simulations in Education and Disability Perspectives (1.5 PDUs)	13 Occupational Therapy Intervention for Chemotherapy-induced Peripheral Neuropathy (1.5 PDUs)	14 Substance Overdose: Death and the Kawa Model (1.5 PDUs)	15 Self-regulation Challenges in Infants and Toddlers (1.5 PDUs)	16 An Interprofessional Approach to Healthcare: A USC Student-run Clinic (STUDENT TRACK – NO PDUs)	17 CPT® Coding for OT Services What you Need to Know (3 PDUs)	18 Using the OT Practice Framework to Re-ignite Fire into Practice (3 PDUs)	19 School-based Practice: Application of Laws and Evidence (3 PDUs)	20 The Impact Anti-immigrant Environment Has on Occupation (3 PDUs)
10:00am	30 Siri, Alexa, Google? Voice Home Automation is Here! (1.5 PDUs)	31 Human Trafficking: OT's Role in Continuum of Care (1.5 PDUs)	32 Promoting Self-advocacy for College Students with Disabilities (1.5 PDUs)	33 Improving Patient and Caregiver Discharge Readiness in Oncology (1.5 PDUs)	34 Occupational Therapy and Spirituality: Exploring Caregivers' Perspectives (1.5 PDUs)	35 Kids Who Hurt: OT for Pain (1.5 PDUs)	36 A Life of a COTA/L (STUDENT TRACK – NO PDUs)				
11:30am	CFOT Awards Luncheon and Symposium (.5 PDU) – Separate Ticket Required – \$75 (Students – \$75/\$10 no lunch/gallery seating) • Pasadena Civic Auditorium Gold Room										
1:00pm	40 Ergonomics: The Office and Beyond (2 PDUs)	41 Using the 3D Printer in Occupational Therapy Education (2 PDUs)	42 Concept to Implementation: Overview of a Conference for Young Adults with Disabilities (2 PDUs)	43 Fatigue Management for Multiple Sclerosis (2 PDUs)	44 Postsecondary Students with ASD: Sleep, Stress, and Social Participation (2 PDUs)	45 Psychosocial Interventions across the Continuum of Cancer Care (2 PDUs)	46 A Holistic Approach to Addressing Sexuality: The Pavlovich Sexuality Questionnaire (2 PDUs)	47 Promoting Oral Health for Children with Special Needs (2 PDUs)	48 School-based Telehealth: Bringing Services to Any Child Anywhere (2 PDUs)	49 The Science and Art of Handcrafts in Occupational Therapy (2 PDUs)	50 Welcome to the OT/OTA Career Shark Tank! (STUDENT TRACK – NO PDUs)
3:00pm	All Proceed to the Awards Ceremony and Keynote Address										
3:15pm	37 - OTAC Awards Ceremony and Keynote Address: Virginia (Ginny) Stoffel, PhD, OT/L (WI), BCMH, FAOTA – All Attend – (.5 PDU)										
5:15pm	C – Expo Hall Grand Opening Reception – All Attend • Pasadena Convention Center										
7:30pm	Alumni and Student Receptions • Hilton Pasadena										



Saturday, October 27, 2018

7:15am	Saturday Registration (7:15am–6:00pm) • Hilton Pasadena											
7:30am	D – Mind-Body Activity: Easy Tai-Chi • Pasadena Convention Center											
8:15am	51 The Pedagogy of Clinical Reasoning in OT Students (1.5 PDU)	52 State Legislative and Regulatory Updates (1.5 PDU)	53 The Physiology of Safety and Danger (1.5 PDU)	54 Lifestyle Redesign®-inspired Program for Obesity (1.5 PDU)	55 Feeding, Eating, and Swallowing in School-based Practice (1.5 PDU)	56 NBCOT Student Knowledge Bowl (STUDENT TRACK - NO PDU)	57 Medication Self-management for Patient Care with Resources/Apps (3 PDU)	58 Cultural Fluidity: Application and Relevance in Clinical Practice (3 PDU)	59 SoulPlay: Creative Empowerment to Change (3 PDU)	60 Optimizing Pediatric Outcomes by Combining Sensory Integration with Other Approaches (6 PDU)	61 Introduction to Therapeutic Applications of Kinesiotape (6 PDU)	
10:00am	62 Exploring the Emerging Niche of First-generation College Students (1.5 PDU)	63 You and Your License: For all Practitioners (1.5 PDU)	64 Reducing Hospital Readmissions Using Lifestyle Redesign®: A Pilot Study (1.5 PDU)	65 Get Your Groove Back: Occupational Engagement for Practitioners (1.5 PDU)	66 Expanding Roles for OT in School-based Practice by Understanding the Legislative Process (1.5 PDU)	67 Speak Easy: Taking Your Presentation Skills from Cringe-worthy to Confident (STUDENT TRACK - NO PDU)						
11:30am	E - Exhibit Hall and Poster Presentations - All Attend • Pasadena Convention Center											
2:30pm	70 OT Issues Around the Country: The National Perspective and the View from Sacramento (1.5 PDU)	71 Innovative Investigations at a Family Homeless Shelter (1.5 PDU)	72 Occupational Therapy Primary Care Consultations for the College Student Population (1.5 PDU)	73 Assessing Family Wellness Using an Occupational Mandala Profile (1.5 PDU)	74 NBCOT: Strategies for Certification Success (STUDENT TRACK - NO PDU)	75 Analyzing Social Media's Influence on School-based Practitioners (1.5 PDU)	76 Residency and Fieldwork Models in Primary Care (3 PDU)	77 But I Thought I Was Being Ethical! (3 PDU)	78 Cognitive Interventions for Children and Adolescents (3 PDU)	60 cont. Optimizing Pediatric Outcomes by Combining Sensory Integration with Other Approaches (6 PDU)	61 cont. Introduction to Therapeutic Applications of Kinesiotape (6 PDU)	
4:15pm	79 Build Your Capacity as an Advocate (1.5 PDU)	80 Are You Preparing Your Clients and Their Families for the Next Fire, Earthquake, Flood, Disaster or Personal Emergency? (1.5 PDU)	81 Understanding Leadership Development Through OT Student Externships (1.5 PDU)	82 Breaking Down Patient Care Barriers Through Caregiver Empowerment (1.5 PDU)	83 Utilizing DIR-FCO Principles in a School Setting (1.5 PDU)	84 Neuroscience Behind Spirituality and Its Role in OT (STUDENT TRACK - NO PDU)						
5:45pm	F – President's Reception and Dance Party! – All Attend • Hilton Pasadena											

Sunday, October 28, 2018

7:15am	Sunday Registration (7:15am–5:00pm) • Pasadena Convention Center											
7:30am	G – OTAC Annual Meeting and Breakfast featuring Joseph Hawthorne, ACSM-CPT, RBT, AKC – (.5 PDU) • Pasadena Convention Center											
9:30am	90 Providing Holistic Hand Therapy to Patients with PTSD (1.5 PDU)	91 Integrating OT into Court-mandated Forensic Psychiatric Treatment (1.5 PDU)	92 How Dying Trajectories Guide Occupation-based Interventions (1.5 PDU)	93 SNFs: Return to Our Roots to Save Our Future (1.5 PDU)	94 Emerging Motherhood: Blending Occupational Therapy and Parenting (1.5 PDU)	95 OT and Lifestyle Medicine: An Evidence-based Response to Management of Non-communicable diseases (3 PDU)	96 Motor Learning Applications in the School-based Setting (3 PDU)					
11:00am	97 Compassionate Listening Development in an Adolescent Urgent Care (1.5 PDU)	98 OT and an Adult with ASP and SPD Partnering for Functional Outcomes (1.5 PDU)	99 Lesbian, Gay, Bisexual, Transgender (LGBT) Seniors: Including the Invisible Population (1.5 PDU)	100 Family-centered Intervention for Individuals with Dementia (1.5 PDU)	101 Inclusion in Childcare Settings Utilizing Trauma-informed Care Model (1.5 PDU)							
12:30pm	OT Practice Café/Lunch – \$18 – Come discuss hot practice topics.											
1:30pm	110 Children's Lower Body Dressing Made Fun and Easy (1.5 PDU)	111 Multidisciplinary Team Approach and Therapeutic Intervention of Infants and Toddlers with Brachial Plexus Palsy (1.5 PDU)	112 Awakening the Leader Within: Skilled Use of Advocacy Interventions at the Person, Population and Community Levels (3 PDU)	113 Kawa Model: Deepening Your Practice (3 PDU)	114 Understanding and Maintaining Compassion Amidst Suffering (3 PDU)	115 Oculomotor and Visual Field Impairments after Neurological Injury (3 PDU)	116 Overcoming the Challenges of Working in a SNF (3 PDU)					
3:00pm	117 Does OT SI Enhance Play in Children?: Scoping Review (1.5 PDU)	118 Homeschooling Research: OT Screening Tool and Parent Preferences (1.5 PDU)										
4:45pm	Conference Concludes: Sunday Registration Closes at 5:00pm—Be sure to submit your Certificate of Completion (white copy)											

CONFERENCE REGISTRATION FORM INSTRUCTIONS

See page 4 for
Deadlines to
Remember

(form on page 30)

- 1. Registrant:** Please print or type all data.
(Online registration is available on the OTAC website at www.otaonline.org through October 12, 2018 at 8:59pm.)
- 2. Program Selection:** Every session and activity has a number or letter. Circle the number/letter of each session/activity you will attend. Attendance is limited by seating or by speaker's request. **Registration forms will NOT be accepted if you select overlapping sessions.**
- 3. Registration Fee:** First, locate your professional status (OT/OTA, Student), select the combination of days you will attend, and circle the appropriate Registration Fee amount that applies to your professional status and combination of days. Additional fees may apply.
- 4. Summary Selection:**
 - You must check all boxes that apply or your registration is not complete.
 - Workplace Colleague Special Discount: See section below on this page for policy/criteria.
 - Special Meal Needs: You must pre-register by October 12, 2018 or we may not be able to accommodate you.
 - Special Needs: You must pre-register by October 12, 2018.
 - Special Activities (SA): These events must be prepaid. There most likely will be no 'at-the-door' availability. Seating is limited.
 - Refund Policy: A refund, less \$75 administrative fee (\$45 for students), will be issued if written notice of cancellation is received by the OTAC Office postmarked on or before October 12, 2018. No refunds after that date. Refunds will not be processed until after Conference.
- 5. Deadlines:** See page 4 for Deadlines to Remember.

CONFERENCE ATTENDEE AGREEMENTS/DISCLAIMERS

Attention

By registering for or attending any event or activity associated with the Occupational Therapy Association of California's (OTAC) 2018 Annual Conference & Expo, I agree to the following:

Professional Development/Information Disclaimer

OTAC's 2018 Annual Conference & Expo is sponsored by the Occupational Therapy Association of California for professional development, networking, and OTAC business purposes. The material presented is not intended to represent the only or the best methods appropriate for the occupational therapy and/or medical condition or professional development issues being discussed, but rather is intended to present the opinions of the presenters, which may be helpful to other health care professionals at arriving at their own conclusions and consequent application. Attendees participating in this professional development education program do so with full knowledge that they waive any claim they may have against OTAC and its staff or representatives for reliance on any information presented during these educational activities.

Public Relations Agreement

Registration and attendance at, or participation in, OTAC meetings and other activities constitutes an agreement by the registrant for OTAC's use and distribution (both now and in the future) of the registrant or attendee's image or voice in photographs, videotapes, electronic/print reproductions, and audio tapes of such events and activities.

Waiver of Liability Agreement

I release the Occupational Therapy Association of California, its staff, elected and appointed officials, presenters, and any other individuals or entities associated with OTAC's 2018 Annual Conference & Expo from any and all liability connected with my participation, as well as from any liability related to changes to the schedule, events, or activities. I acknowledge and agree that I am participating of my own choice and assume all risk in connection thereof, and that in the event that a need for emergency medical service arises, I authorize and consent to such services being provided at my own expense.

WORKPLACE COLLEAGUE DISCOUNT

Don't get enough time to visit with those in your workplace? Want a way to save money together? You can travel together and room together, you can also save on registration together. All individual registration forms, full payment, and membership applications (if applicable) must be submitted together by October 12, 2018.

Discount policies

- Three or more OTAC members from the same **physical** workplace address can receive a 10% discount when pre-registering for conference together. Minimum of three registrants required.
- You cannot register online to receive this discount. Registration forms must be **submitted together** by fax, email attachment, or by mail.
- Discount available to OTAC members only; however, a nonmember can submit a membership application along with the registration forms to qualify for discount.
- This is a pre-registration special only. Special ends October 12, 2018.
- Discount applies only to the Registration Fee for Friday, Saturday and/or Sunday. Discount does not apply to any other fees including presenter/material fees/costs, special event fees including meals, and pre-conference institutes.
- No refunds given if number of colleagues registered together drops below three; however, new workplace colleagues may be substituted for previous registrants at any time (OTAC membership required).
- Student members already receive a discounted rate and do not qualify for this discount.
- Conference registrants receiving any other registration discount do not qualify for this discount.

CONFERENCE REGISTRATION FORM

See page 4 for deadlines and increases to Early Bird Registration Rates!



1. REGISTRANT: (Please print or type)

First Name _____ Middle Initial _____
 Last Name _____ Credentials _____
 Home Address _____
 Home City/State/Zip _____
 Phone Home (____) _____ Work (____) _____ Cell (____) _____
 Email _____ First Time Attendee Yes No
 Who to contact in case of an emergency: (Name and cell phone) _____

2. PROGRAM SELECTION: (Circle) the sessions/activities you will attend. Sessions/activities are included in registration for the corresponding day.

You may not register for overlapping sessions.

THURSDAY				FRIDAY																SATURDAY											SUNDAY									
AM Additional fees required for Thursday	1	2	3	4	10	11	12	13	14	15	16	17	18	19	20	51	52	53	54	55	56	57	58	59	60	61	90	91	92	93	94	95	96							
	5	6	7		30	31	32	33	34	35	36	47	48	49	50	62	63	64	65	66	67	76	77	78	60 cont	61 cont	97	98	99	100	101	112	113	114	115	116				
PM Additional fees required for Thursday					40	41	42	43	44	45	46	47	48	49	50	70	71	72	73	74	75	76	77	78	60 cont	61 cont	110	111	112	113	114	115	116							
ACTIVITIES	A "PPN"			37	B C			"AGA"			"PER"			"SL/M"			D E F		"PDL"		G																			

3. REGISTRATION FEE: (Circle) the combination of days you are attending in order to be registered. Enter amount in Section 4/ Registration Fee below.

FEES INCREASE SEPTEMBER 7, 2018	FRI./SAT./SUN.	FRI. ONLY	FRI./SAT.	FRI./SUN.	SAT. ONLY	SAT./SUN.	SUN. ONLY
OT/OTA	\$319	\$149	\$269	\$289	\$149	\$289	\$179
OTS (Student-MOT or OTA)	\$159	\$59	\$99	\$119	\$59	\$119	\$99
ADD-ON: NON-OTAC MEMBER FEE/NEW MEMBER DUES	OT: Add \$130 to the fees above • OTA: Add \$100 to the fees above • Students (MOT/OTA) add \$50 to the fees above. This add-on fee qualifies you for a 1-year membership if you have not been a member since 7/2016. Submit a membership application.						

4. SUMMARY SECTION: Fill in and check all boxes that apply or your registration form is not complete and may be subject to additional fees.

- Registration Fee (from Section 3 above) \$ _____
- Workplace Colleague Special Discount (Subtract 10%) \$(____)
- Non-OTAC Member Fee (OT) \$130 – (May Include Membership) \$ _____
- Non-OTAC Member Fee (OTA) \$100 – (May Include Membership) \$ _____
- Non-OTAC Student Member Fee \$50 – (May Include Membership) \$ _____
- Session 61 Materials Fee \$50 \$ _____
- Session 1 (Members \$39/Nonmembers \$59) \$ _____
- Session 2 (Members \$39/Nonmembers \$59) \$ _____
- Session 3 (Members \$39/Nonmembers \$59) \$ _____
- Session 4 (Members \$79/Nonmembers \$99) \$ _____
- Session 5 (Members \$39/Nonmembers \$59) \$ _____
- Session 6 (Members \$39/Nonmembers \$59) \$ _____
- Session 7 (Members \$49/Nonmembers \$69) \$ _____
- SA: Guest Registration (see page 5) _____ @ \$65ea. \$ _____
- SA: Friday CFOT Symposium/Lunch _____ @ \$75ea. \$ _____
- SA: Friday CFOT Symposium/No Lunch _____ @ \$10ea. STUDENTS \$ _____
- SA: Saturday Exhibit Hall Lunch _____ @ \$15ea. \$ _____
- SA: Sunday Breakfast: Extra Ticket _____ @ \$30ea. \$ _____
- SA: Sunday OT Practice Café/Lunch: Ticket _____ @ \$18ea. \$ _____
- Saturday Exhibit Hall Only: Member \$0/Nonmember \$25 (OT/OTA/OTS Only) \$ _____
- Registration received between 9/7/18-10/12/18 – \$60 (Add) \$ _____
- Registration received after 10/12/18 onsite – \$90 (Add) \$ _____
- TOTAL (Send check or use credit card) \$ _____

5. PAYMENT INFORMATION

- AMEX MasterCard Visa Check # _____ (Payable to OTAC)
- Card Number _____ VCode* _____
- Name of Cardholder _____ Exp. Date _____
- Card Billing Address _____
- City _____ State _____ Zip _____
- Signature _____
- *The VCode is a 3 or 4 digit number on the back of your card following your card number (front of AMEX card).
- WORKPLACE COLLEAGUE DISCOUNT (Must register by October 12):
Employer _____
Employer Address _____
- SPECIAL MEAL AND NEED REQUESTS: (Must register by October 12)
Attach description of requests.

6. SUBMIT REGISTRATION

Fax (916) 294-0415
 Mail OTAC, PO Box 276567, Sacramento, CA 95827-6567
 Online www.otaconline.org

7. KEEP A COPY FOR YOUR RECORDS

**Questions? By Phone: (916) 567-7000 or (888) 686-3225
 By Email: staff@otaconline.org**

*No refunds after October 12, 2018.

*Beginning October 13, 2018, registration will only be accepted "on-site" at the Pasadena Convention Center and the fee increases \$90.

*Cancellation Fee: \$75/Practitioners; \$45 Students. Must cancel by October 12, 2018.

EXHIBITORS

Friday, October 26 • 5:15pm–7:15pm and Saturday, October 27 • 11:30am–2:15pm
Pasadena Convention Center, Exhibit Hall A

Still time to exhibit or sponsor!
Call Shannon Rutledge at (888) 686-3225
or email at shannon@otaonline.org.

COMPANY NAMES

A1 Rehab & Recruitment Services
Aureus Medical Group
Bio-Pacific
Brighton Rehabilitation
Burger Rehabilitation Systems, Inc.
California Board of Occupational Therapy (CBOT)
California Foundation for Occupational Therapy (CFOT)
Casa Colina Hospital and Centers for Healthcare
Centre for Neuro Skills
Driving Fitness Evaluations
Easterseals Southern California
EBS Healthcare
Ensign Services
Every Child Achieves & Wellness Works
Executive Communication Systems
FeldCare Connects
Haynes Family of Programs - S.T.A.R. Academy (NPA); Haynes Education Center (NPS)
HCR ManorCare
Host Healthcare, Inc.
interface rehab, inc.
Intergro Rehab Services
InvoHealthCare – Progressus Therapy
Kaiser Permanente
Loma Linda University
Los Angeles Unified School District
Mediscan/Direct-Ed
MobilityWorks
More Cowbelt: Custom Gait Belts
Occupational Therapy Association of California (OTAC)
ONR, Inc. - Orthopaedic & Neurological Rehabilitation
Performance Health
Preferred Healthcare Staffing
Protocol Agency
Psymark LLC
RehabCare and Kindred Hospital Rehabilitation Services
School Steps, Inc.
Shower Buddy, LLC
Stanbridge University
The Stepping Stones Group
Therapy Specialists
UCLA Health

COMPANY NAMES

University of St. Augustine
University of Utah
USC Mrs. T.H. Chan Division of Occupational Science and Occupational Therapy
West Coast University

BLUE RIBBON SPONSORS

- Bio-Pacific
- CSU, Dominguez Hills
- EBS Healthcare
- ONR, Inc. - Orthopaedic & Neurological Rehabilitation
- Psymark, LLC
- Stanbridge University
- The Stepping Stones Group
- University of St. Augustine
- West Coast University

PRINT ADVERTISERS

- EBS Healthcare
- The Stepping Stones Group
- USC Mrs. T.H. Chan Division of Occupational Science and
Occupational Therapy



CUSTOMIZE YOUR OWN SCHEDULE

Our Annual Conference tracks provide you the opportunity to build your own customized schedule to meet your professional development goals. Focus on one or two areas or mix and match for an eclectic array of continuing education. Once you select and register for your sessions, you can build a digital schedule through the Annual Conference mobile app.

Building OT Capacity

CFOT Awards Luncheon and Symposium

Honored Lecturer Jerilyn "Gigi" Smith, PhD, OTR/L, FAOTA

The Power of Selective "Yes"

Friday Keynote Address

Featuring Virginia (Ginny) Stoffel, PhD, OTR/L (WI), FAOTA

Named to AOTA's OT Centennial 100 Most Influential OTs

Building OT Capacity with Effective Leadership and Skilled Advocacy

Sunday President's Address

Heather J. Kitching, OTD, OTR/L

Building OT Capacity

Sunday Keynote Address

Fitness success coach, Joseph Hawthorne, ACSM-CPT, RBT, AKC

Building Capacity: Individual Strength and Sustainability

Professional Capacity

- 18 Using the OT Practice Framework to Re-ignite Fire into Practice
- 52 State and Regulatory Issues Update
- 53 You and Your License: For All OT Practitioners
- 54 Expanding Roles for OT in School-based Practice
- 70 OT Issues Around the Country: The National Perspective and the View from Sacramento
- 79 GO-TO-OT: Building Your Professional Advocacy Capacity
- 112 Awakening the Leader Within: Skilled Use of Advocacy Intervention at the Person, Population, and Community Levels

Academic/Fieldwork/Research

- 12 Bridging the Gap Between Simulations in Education and Disability Perspectives
- 32 Promoting Self-advocacy for College Students with Disabilities
- 41 Using the 3D Printer in Occupational Therapy Education
- 44 Postsecondary Students with ASD: Sleep, Stress, and Social Participation
- 51 The Pedagogy of Clinical Reasoning in OT Students
- 62 Exploring the Emerging Niche of First-generation College Students
- 71 Innovative Investigations as a Family Homeless Shelter
- 72 Occupational Therapy Primary Care Consultations for the College Student Population
- 76 Residency and Fieldwork Models in Primary Care
- 81 Understanding Leadership Development through OT Student Externships

Advocacy/Leadership/Management

- 4 The Private Practice Business Bootcamp
- 17 CPT® Coding for OT Services

- 18 Using the OT Practice Framework to Re-ignite Fire into Practice
- 52 State and Regulatory Issues Update
- 59 You and Your License: For All OT Practitioners
- 70 OT Issues Around the Country: The National Perspective and the View from Sacramento
- 73 Assessing Family Wellness Using an Occupational Mandala Profile
- 77 But I Thought I Was Being Ethical!
- 79 GO-TO-OT: Building Your Professional Advocacy Capacity
- 112 Awakening the Leader Within: Skilled Use of Advocacy Interventions at the Person, Population, and Community Levels

Behavioral/Mental Health/Sensory/Wellness

- 1 Addressing Sleep in Occupational Therapy: A 24-hour Approach
- 20 The Impact Anti-immigrant Environment Has on Occupation
- 90 Providing Holistic Hand Therapy to Patients with PTSD
- 91 Integrating OT into Court-mandated Forensic Psychiatric Treatment
- 97 Compassionate Listening Development in an Adolescent Urgent Care
- 98 OT and an Adult with ASP and SPD: Partnering for Functional Outcomes
- 112 Awakening the Leader Within: Skilled Use of Advocacy Interventions at the Person, Population, and Community Levels

General Practice

- 1 Addressing Sleep in Occupational Therapy: A 24-hour Approach
- 6 Opportunities for Incorporating Dogs into OT Practice
- 17 CPT® Coding for OT Services
- 40 Ergonomics: The Office and Beyond
- 58 Cultural Fluidity: Application and Relevance in Clinical Practice
- 80 Are You Preparing Your Clients and Their Families for the Next Fire, Earthquake, Flood, Disaster, or Personal Emergency?
- 82 Breaking Down Patient Care Barriers Through Caregiver Empowerment
- 113 Kawa Model: Deepening Your Practice
- 114 Understanding and Maintaining Compassion Amidst Suffering

Older Adults/Geriatrics

- 2 Building Skills for Engaging People Living with Dementia
- 53 The Physiology of Safety and Danger
- 64 Reducing Hospital Readmissions Using Lifestyle Redesign®: A Pilot Study

CUSTOMIZE YOUR OWN SCHEDULE

- 92 How Dying Trajectories Guide Occupation-based Interventions
- 93 SNFs: Return to Our Roots to Save Our Future
- 99 Lesbian, Gay, Bisexual, Transgender Seniors: Including the Invisible Population
- 100 Family-centered Intervention for Individuals with Dementia
- 101 Understanding and Maintaining Compassion Amidst Suffering
- 115 Oculomotor and Visual Field Impairments After Neurological Injury
- 116 Overcoming the Challenges of Working in a Skilled Nursing Facility

Oncology

- 13 Occupational Therapy Intervention for Chemotherapy-induced Peripheral Neuropathy
- 33 Improving Patient and Caregiver Discharge Readiness in Oncology
- 45 Psychosocial Interventions Across the Continuum of Cancer Care

Pediatrics/School-based/Young Adults

- 3 Getting Comfortable With Feeding — You Can Do It!
- 7 The Evaluation in Ayres Sensory Integration: Normative Data Collection
- 15 Self-regulation Challenges in Infants and Toddlers
- 19 School-based Practice: Application of Laws and Evidence
- 35 Kids Who Hurt: OT for Pain
- 36 Concept to Implementation: Overview of a Conference for Young Adults with Disabilities
- 47 Promoting Oral Health for Children with Special Needs
- 14 Substance Overdose: Death and the Kawa Model
- 34 Occupational Therapy and Spirituality: Exploring Caregivers' Perspectives
- 46 A Holistic Approach to Addressing Sexuality: The Pavlovich Sexuality Questionnaire
- 48 School-based Telehealth: Bringing Services to Any Child Anywhere
- 49 The Science and Art of Handcrafts in Occupational Therapy
- 54 Lifestyle Redesign®-inspired Program for Obesity
- 55 Feeding, Eating, and Swallowing in School-based Practice
- 56 SoulPlay: Creative Empowerment to Change
- 57 Optimizing Pediatric Outcomes by Combining Sensory Integration with Other Approaches
- 58 Expanding Roles for OT in School-based Practice
- 59 Cognitive Interventions for Children and Adolescents
- 65 Get Your Groove Back: Occupational Engagement for Practitioners
- 71 Innovative Investigations at a Family Homeless Shelter
- 73 Assessing Family Wellness Using an Occupational Mandala Profile
- 78 Analyzing Social Media's Influence on School-based Practitioners
- 82 Breaking Down Patient Care Barriers Through Caregiver Empowerment

- 83 Utilizing DIR-FCD Principles in a School Setting
- 84 Emerging Motherhood: Blending OT and Parenting
- 85 Motor Learning Applications in the School-based Setting
- 86 Inclusion in Childcare Settings Utilizing Trauma-informed Care Model
- 87 Children's Lower Body Dressing Made Fun and Easy
- 88 Multidisciplinary Team Approach and Therapeutic Intervention of Infants and Toddlers with Brachial Plexus Palsy
- 89 Does OT SI Enhance Play in Children?
- 95 Occupational Therapy and Lifestyle Medicine
- 118 Homeschooling Research: OT Screening Tool and Parent Preferences

Physical Disabilities

- 5 OT and Pain Management in Acute Care
- 11 Epilepsy Care: An Outpatient, Lifestyle Management Approach
- 31 Human Trafficking: OT's Role in Continuum of Care
- 43 Fatigue Management for Multiple Sclerosis
- 49 The Science and Art of Handcrafts in Occupational Therapy
- 61 Introduction to Therapeutic Applications of Kinesiotape
- 90 Providing Holistic Hand Therapy to Patients with PTSD
- 97 Compassionate Listening Development in an Adolescent Urgent Care
- 115 Oculomotor and Visual Field Impairments after Neurological Injury

Technology

- 10 Can Video Games Foster Engagement in Therapy?
- 30 Siri, Alexa, Google? Voice Home Automation Is Here!
- 41 Using the 3D Printer in Occupational Therapy Education
- 57 Medication Self-management for Patient Care with Resources/Apps

Gather!

- Movie Night (Thursday)
- CFOT Awards Luncheon and Symposium (Friday)
- Awards Ceremony and Keynote Address (Friday)
- Mind-Body Activity: Easy Tai-Chi (Friday and Saturday)
- Expo Hall (Friday and Saturday)
- Grand Opening Reception in Expo Hall (Friday)
- Poster Presentations in Expo Hall (Saturday)
- Alumni/Student Receptions (Friday and Saturday)
- OTAC Annual Meeting and Breakfast with Keynote (Sunday)

Join the Dialogue!

- Follow us on Twitter @OTACnews
- Start a conversation using #OTACconf2018
- Talk about building your personal and professional capacity using #buildngOTcapacity
- Add to the bold dialogue at #OTbebold
- Let's be advocates at #GoToOT
- Post on Instagram @otacofca
- Friend us on Facebook! Fb.me/OTACnews

WHY ATTEND CONFERENCE?

Here's what your colleagues said about their past experiences – why they attended and/or what they liked best.

A GREAT OPPORTUNITY TO BE INVOLVED

The hands-on experience

THE TOPICS

My employer invited me to attend and paid for my registration

IT WAS AFFORDABLE

The variety of sessions

TO PRACTICE MY NETWORKING SKILLS

To earn PDUs all in one place

WEEKEND AVAILABILITY

It is a friendly environment

CONFERENCE WAS WELL ORGANIZED

Greatly informed and energetic presenters

I ALWAYS ATTEND

Attended for my own well-being

IT IS THE THING TO DO

Wanted to check out the exhibits

SUPPORTING ADVOCACY EFFORTS

Wanted to attend sessions outside of my practice area

SO INSPIRING

Catching up with old friends I hadn't seen in a while

WANTED TO EXPAND KNOWLEDGE IN MY OWN FIELD

I had never attended a state conference

WANTED TO CELEBRATE OTAC'S 40TH ANNIVERSARY

I am re-entering the workforce

WANTED TO BUILD NEW SKILLS

Quality of the sessions was really good

ALWAYS APPRECIATE THE OPPORTUNITY TO GROW AND THRIVE TOGETHER

Brought my daughter who is a new OT

IT IS A TRADITION FOR ME

Helps me keep up to date on regulations

PROFESSIONAL CAMARADERIE

I attended before and enjoyed it

LIKED THE VARYING TIME DURATIONS OF PRESENTATIONS

Posters presentations were great

BUILDING OT CAPACITY VIDEO PROJECT COMPETITION

You are invited to show off your creativity and passion for OT!

Submit your original compilation video highlighting innovative and creative ways occupational therapy practitioners are building capacity in their communities.



- Your video MAY be shown at the OTAC 2018 Annual Conference as well as on OTAC's YouTube Channel.
- Prizes will be awarded for those selected to be shown at the Annual Conference.
- No more than 1-2 minutes in length.
- Release forms will be required of your subjects.
- Submit by September 15, 2018.
- For submission instructions, email OTAC at shannon@otaconline.org.

THE MANY FACES OF PAST CONFERENCES



STUDENT TRACK

Supporting Our Future Leaders

For many years, OTAC has offered student members a deep discount on registration fees for Annual Conference as a component of the OTAC Board of Directors' goal to support the future leaders of the profession and the Association. The Annual Conference affords students an opportunity to network with other students from around the state, network with practitioners for mentorship opportunities, learn about clinical applications outside of the school and fieldwork settings, meet with employment recruiters in the Expo Hall, and be energized and excited about their profession and the Association. The Student Track selections are a collaboration of the OTAC Student Leadership Committee, which includes the Committee's Student Delegates (two students from each OT/OTA program), and the OTAC Conference Committee.

The student track on Friday includes sessions 16, 19, 20, 36, 46, 48, and 50. On Saturday the sessions are 52, 56, 64, 67, 70, 71, 75, 79, 80, and 84. Students may select ANY session on Sunday. This is the largest selection of Annual Conference sessions for students at their discounted fee in OTAC's history. Students are eligible to attend any session of their choosing through Conference by paying the OT/OTA registration fee.

Students are also encouraged to attend Pre-Conference Institute sessions on Thursday. While there isn't a discount, these sessions often offer unique content as well as exposure to alternative and emerging practice methods.



STRENGTH
Everyone deserves to have the best quality of life.

Our OTs strive each day to empower students. Superpowers welcome!

Nationwide Openings
Loan Repayment
Mentoring
Full Benefits
Travel Opportunities

Stop by BOOTH #111
Enter our Raffle, Learn More!

800-337-5965
careers@thestepingstonesgroup.com
www.thesteppingstonesgroup.com

The Stepping Stones GROUP
Special Education Solutions

OTAC BOARD OF DIRECTORS

President

Heather J. Kitching, OTD, OTR/L
pres@otaconline.org

Vice President

Bryant Edwards, OTD, MA,
OTR/L, BCP, MPH
vpres@otaconline.org

Secretary

Jerilyn (Gigi) Smith, PhD, OTR/L,
FAOTA
secty@otaconline.org

Treasurer

Lisa Hiestand, OTD, MS, OTR/L
treas@otaconline.org

Region 1 Director

Open
reg1dir@otaconline.org

Region 2 Director

Ingrid Leu, OTD, OTR/L
reg2dir@otaconline.org

Region 2 Director-Elect

Rani Waterman, OTD, OTR/L,
AMPS
reg2direlect@otaconline.org

Region 3 Director

Brittney Weinerth, MS, OTR/L
reg3dir@otaconline.org

Region 4 Director

Erin Dolin, EdD, OTR/L

Region 5 Director

Marlene Steele, COTA/L,
MHA/Ed, CBIS
reg5dir@otaconline.org

Region 5 Director-Elect

Carlin Daley, OT, MA/Ed, OTR/L

Executive Director

Karen C. Polastri, IOM
execdir@otaconline.org

OTAC COMMITTEE CHAIRS

Advocacy & Government Affairs

Sabrena McCarley, MBA-SL,
OTR/L, CLIPP, RAC-CT
gachr@otaconline.org

Awards

Diane Mayfield, EdD, OTR/L
awardschr@otaconline.org

Communications

Open
commchr@otaconline.org

Practice, Ethics, & Reimbursement

Katie Jordan, OTD, OTR/L

Phuong Nguyen, OTD, OTR/L,
CLT, Neuro-IFRAH Certified
practicechr1@otaconline.org

Professional Development & Leadership

Judy Hopkins, OTD, OT/L,
SWC, CLE
educchr@otaconline.org

Student Leadership

Lina Awshee, COTA/L

Alison George, MS, OTR/L
studentchr1@otaconline.org

Ad Hoc Committee for Conference

Heather Javaherian-Dysinger,
OTD, OTR/L
Julie Kugel, OTD, MOT, OTR/L
confchr@otaconline.org

*Under the domain of Professional
Development & Leadership
Committee*

Ad Hoc Committee for Membership

Lauren Heflin, MA, OTR/L
membchr@otaconline.org

Ad Hoc Committee for Nominations

Diana Su-Erickson, OTR/L
nomchair@otaconline.org

Ad Hoc Committee for OTs as LMHPs

Deborah B. Pitts, PhD, OTR/L,
BCMh, CPRP

otlmhp@otaconline.org

Liaison Organization

OTAC-Political Action Committee
(OTAC-PAC)

Open

otacpac@otaconline.org



OTAC
 PO Box 276567
 Sacramento, CA 95827-6567
 Change service requested.

Presorted
 Standard Mail
 U.S. Postage
PAID
 Sacramento, CA
 Permit # 1827

AOTA | The American
 State Affiliate | Occupational Therapy
 Association, Inc.

AUGUST 2018
 VOLUME 42
 NUMBER 7

2018 OTAC

ANNUAL CONFERENCE & EXPO

October 25-28, 2018 | Pasadena, CA



LET'S TWEET! @OTACnews #OTACCONF2018 #buildingOTcapacity

Attention!
 Register by September 6, 2018 to take advantage
 of the Discounted Early Bird Registration fee!

OCTOBER 25
 PRE-CONFERENCE INSTITUTE

HILTON PASADENA &
 PASADENA CONVENTION
 CENTER