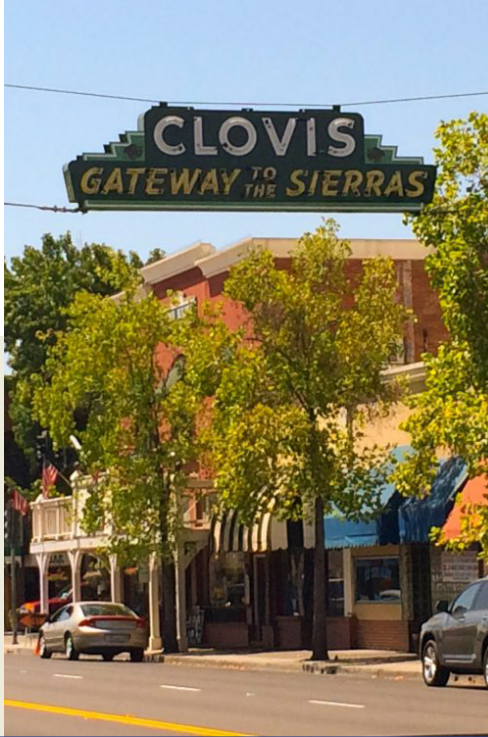


Friday,
September 6, 2019
8:30am – 4:30pm
Optional Networking Event

Saturday,
September 7, 2019
8:00am – 4:00pm

Clovis Veterans Memorial
District Building
808 4th Street
Clovis, CA 93612



OTAC 1st Annual School-Based OT Symposium

Promoting Excellence in School-Based Practice (earn up to 11.5 PDUs)
Evidence | Meaningful Occupation | Links to Curriculum | Tools to Support Practice

*Earn up to
11.5 PDUs*

Why Attend

Enrich practice, network, discover new tools.

Who Should Attend

Occupational therapy practitioners and students who are interested in school-based practice.

Topic Areas

- Multi-Tiered Systems of Support
- Positive Behavioral Intervention and Support
- Augmentative and Alternative Technology
- Linking Performance, Assessment, and Documentation
- Sensory Processing
- Creating an OT Tool Box
- Ask the Experts
- Special Interests Break Out



...inspiring your learning journey

Symposium Overview, Learning Objectives, Schedule, Presenters, About the Lunch, and Hotel Options

Friday, September 6 – (5.75 PDUs)

Overview

- Expanding Occupational Therapy's (OT) Role in Schools – Prevention and Intervention
- Overview of Multi-Tiered System of Supports (MTSS) and Positive Behavioral Intervention and Supports (PBIS)
- Demystifying Assistive Technology (AT) Augmentative and Alternative Communication (AAC) to Promote Self-Determination and Engagement
- Linking Performance, Assessment and Documentation of Outcomes – It is all connected!

Learning Objectives

Participants will:

- Identify key concepts used to integrate MTSS and PBIS into occupational therapy practice in schools.
- Develop strategies to promote student engagement and self-determination using augmentative and alternative communication and assistive technology.
- Apply evidence and theory in OT practice to complete a comprehensive, data-driven assessment linked to curriculum and student engagement.
- Identify the tools used to link assessment to goals writing grounded with curriculum relevance.

Application of knowledge will be relevant to all age groups.

Schedule/Section Topics

8:30am – 9:00am

Registration (includes coffee/pastries)

9:00am – 9:15am

Welcome

Erin Dolin, EdD, OTR/L

Ecological Framework for Child Success

Lisa Test, OTD, OTR/L

9:15am – 10:15am

Overview of Multi-Tiered System of Support (MTSS)

Dennis Wiechmann, EdD

10:30am – 11:30am

Positive Behavioral Intervention and Supports (PBIS)

Jessica Hannigan, EdD

11:30am – 12:00pm

Integrating MTSS and PBIS with Practice: Relevance and Application for Occupational Therapy

Lisa Test, OTD, OTR/L

12:00pm – 1:00pm

Lunch

1:00pm – 2:00pm

Demystifying OT's Role in Assistive Technology (AT) and Augmentative and Alternative Communication (AAC) to Promote Self-Determination and Engagement

Timothy Cunha, MA, OTR/L, ATP

2:00pm – 4:00pm

Linking Performance, Assessment, and Documentation of Outcomes – It is all connected!

Erin Dolin, EdD, OTR/L

4:30pm

Optional Networking Event (information coming soon)

Saturday, September 7 – (5.75 PDUs)

Overview

- Evaluation of Sensory Processing: Why Does It Matter in School-Based Practice?
- Creating an OT Tool Box

Learning Objectives

Participants will:

- Identify a wide range of options for assessment and analysis of sensory processing, specifically in the context of school-based practice and access to education.
- Define the relationship between sensory processing and participation in education.
- Expand knowledge about current school-based practice issues with a panel of experts.
- Create a tool box of treatment ideas that can be readily up or downgraded based on the students' needs.

Application of knowledge will be relevant to all age groups within school-based practice. Treatment strategies will readily apply to PreK through fifth grade but may be tailored for older students.

Schedule/Section Topics

8:00am – 8:30am

Registration (includes coffee/pastries)

8:30am – 8:45am

Welcome

Erin Dolin, EdD, OTR/L

8:45am – 12:00pm (noon)

Sensory Processing and Its Relationship to Learning and Play:

Assessing Sensory Processing in the School Environment

Cheryl Ecker, MA, OTR/L, BCP

12:00pm – 12:45pm

Lunch with Ask the Experts and Panel Discussion

12:45pm – 1:00pm

OTAC/CPTA School Credential: Expanding the Role of OT in the Schools

Erin Dolin, EdD, OTR/L; Lisa Test, OTD, OTR/L; Timothy Cunha, MA, OTR/L, ATP

1:00pm – 3:00pm

Creating an OT Tool Box

Emily Dassow, OTR/L

3:15pm – 4:00pm

Optional Special Interests Break Out – “Share, Show, and Tell”

Facilitator: Jayson Davies, MA, OTR/L

Break out into one of four special interest topic groups to share ideas, resources, and evidence. Learn more about a variety of school-based treatment tools and models. Break out topics: assistive technology, pull-out treatment services, collaborative services in the classroom, and services in nontraditional settings such as at recess and in the cafeteria.

Bring examples of your own and hear from others about creative and fun OT tools, new assessments used in practice, assessment reports, and treatment models to share. Groups will be facilitated by fellow practitioners with additional resources and evidence-based practice pertinent to these areas.

Giveaways for Attendees

Courtesy of CoughDrop and The Pencil Grip.

Symposium Presenters



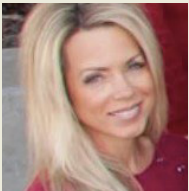
Timothy Cunha, MA, OTR/L, ATP, has worked as an occupational therapy (OT) practitioner since 1983 in various settings from outpatient to inpatient and with infants to adults. He has held positions from staff therapist to a regional manager. Cunha states he has always been a gadget person; he loves technology yet despises it at the same time. As an OT in the schools, he believes that technology is a modern equivalent to a dressing stick, the button hook, or sock aide. It can be the key to help keep the door open to our students' educational environment and provide them with a great sense of self-determination, empowerment, and engagement.



Emily Dassow, OTR/L, is an energetic occupational therapy practitioner with 15 years of experience working in pediatrics. She graduated from the University of Wisconsin - Milwaukee and moved to Los Angeles to complete her fieldwork. Her experience includes working in an outpatient sensory integration clinic as well as schools in the Los Angeles area with children from preschool to high school. Dassow has provided workshops related to Common Core State Standards and how they relate to occupational therapy as well as a webinar about fine and visual motor skills. She is passionate about reinvigorating her workshop participants by sharing lots of practical treatment ideas that can be implemented immediately.



Jayson Davies, MA, OTR/L, is a school-based occupational therapy practitioner with seven years of experience. He currently works for the Chino Valley Unified School District and is a thesis advisor for students in the Masters of Occupational Therapy program at Stanbridge University. Recently, Davies has put forth his efforts in implementing full classroom and small group collaborative response to intervention (RTI) lessons with general and special education teachers. He also hosts the OT School House Podcast and produces the OTSchoolHouse.com website for school-based occupational therapy practitioners.



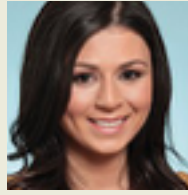
Erin Dolin, EdD, OTR/L, is an occupational therapy practitioner with more than 17 years of experience working with students in educational, hospital, and clinical settings. She is passionate about the role of occupational therapy in the education setting, which inspired her to pursue and complete her doctorate in educational leadership. She holds several certifications in specialty areas including sensory integration, the Perceptual Enrichment Program, therapeutic listening,

and Handwriting Without Tears Level 1. Additionally, she has taught as an adjunct faculty member with the department of physical therapy at California State University, Fresno since 2005 and currently is a national presenter for Handwriting Without Tears. She provides professional learning presentations on the neuroscience of learning to educational organizations including California Association of Supervisors of Child Welfare and Attendance (CASCWA) and master teacher conferences. Dolin serves on the OTAC Board of Directors as the elected Region 4 director and the OTAC School-Based Subcommittee OT Credential Initiative. She also serves on the AOTA State Leaders of Education Committee.



Cheryl Ecker, MA, OTR/L, BCP, has been practicing in occupational therapy with specialization in sensory integration and feeding for nearly 30 years. She has practiced in the school, home, and clinic settings. Ecker is a co-author of the Sensory Processing Measure and the Sensory Processing Measure - Preschool manuals and home forms in addition to the upcoming Sensory Processing Measure - 2 forms for the life span. She has provided guest lectures and presentations for numerous

university programs, community groups, television/radio programs, and national/international organizations.



Jessica Djabrayan Hannigan, EdD, is an assistant professor in the Educational Leadership Department at California State University, Fresno. She works with schools and districts throughout the nation on designing and implementing effective behavior systems. Her expertise include Response to Intervention (RTI) Behavior, Multi-Tiered System of Supports (MTSS), Positive Behavioral Intervention and Supports (PBIS), Social and Emotional Learning (SEL), and more. The combination of her special education and student support services background, school and district level administration, and higher education research experiences has allowed her to develop inclusive research-based best practices around systemic implementation of behavior initiatives throughout the nation. Hannigan is the co-author of the following educational bestselling books: The PBIS Tier One Handbook, The PBIS Tier Two Handbook, The PBIS Tier Three Handbook, and Don't Suspend Me! An Alternative Discipline Toolkit. Some of her recognitions include being named California Outstanding School Psychologist of the Year, Administrator of the Year, Outstanding Faculty Publications and Service Award recipient, being recognized by the California Legislature Assembly for her work in social justice and equity, and receiving the inaugural Association of California School Administrators Exemplary Woman in Education Award in 2017 for her relentless work around equity in schools. She currently serves on the California Safe, Healthy, Responsive Schools Pilot & Network Design Team.



Lisa Test, OTD, OTR/L, is the coordinating therapist for the occupational therapy and physical therapy program at Los Angeles Unified School District. She earned a Bachelor of Arts in ergonomics from the University of California, Santa Barbara, and master's and clinical doctorate degrees in occupational therapy and occupational science from USC. With professional interests in children with developmental disabilities, sensory integration, autism, play, and school-based practice, she is recognized as a leader in occupational therapy possessing extensive experience in the delivery of interventions for children with disabilities. Test has presented both nationally and internationally on the application of sensory integration in the schools, clinical reasoning, and assessment and intervention of children with diverse needs. She serves on the OTAC Practice, Ethics, and Reimbursement Committee and co-chairs the OTAC School-Based Practice Subcommittee and the OT School Credential Initiative.



Dennis Wiechmann, EdD, is currently the supervisor of Child Welfare and Attendance for Sanger Unified School District. He holds a master's in school psychology and a doctorate in educational leadership. Wiechmann has been directly involved with all Sanger unified schools to support positive attendance, school safety, positive school climate, and positive school culture. He is responsible for the design and implementation of the District Restorative Justice Program and District School Attendance Review Board processes. Wiechmann has been the president of several state organizations that focus on supporting students' social-emotional needs, including the California Association of Supervisors of Child Welfare and Attendance (CASCWA) and the Community Day School Field Colleagues Network. He is also part-time faculty at California State University, Fresno and the Channel Island Doctoral Program in Educational Leadership.

Symposium Committee

Julie Bissell, OTD, OTR/L, ATP

Timothy Cunha, MA, OTR/L, ATP

Jayson Davies, MA, OTR/L

Erin Dolin, OTD, OTR/L

Lisa Test, OTD, OTR/L

Registration Form

Lunch

Box Lunch – \$10/per person

Includes handcrafted sandwiches on toasted French roll, chips, and beverage

Vegetarian: fresh sliced avocado, sprouts, fresh sliced cucumber

Turkey: turkey breast and aged Swiss cheese

Tuna: Albacore tuna, sprouts, avocado, and cream cheese

Cancellation/Refund Policy

\$50 retained to cover cancellation/refund processing costs. Written notice must be received in OTAC office by **August 29, 2019** to be eligible for refunds. No refunds after this date. *Disclaimer: OTAC reserves the right to make changes to the program. No refunds will be made based on these changes.*

Hotel Options

Fairfield Inn & Suites by Marriott Fresno Clovis

50 N. Clovis Avenue, Clovis, CA 93612
(559) 323-8080 | <http://bit.ly/2FNfDGN>
Room rates start at \$153/night

Comfort Suites

143 Clovis Avenue, Clovis, CA 93612
(559) 862-1449 | <http://bit.ly/2J2G7WU>
Room rates start at \$97/night

La Quinta Inn & Suites by Wyndham Clovis Old Town

1508 Clovis Avenue, Clovis, CA 93612
(559) 291-9000 | <http://bit.ly/2XHIZR1>
Room rates start at \$149/night

Best Western Clovis Cole

415 Clovis Avenue, Clovis, CA 93612
(559) 299-1547 | <http://bit.ly/305ALQh>
Room rates start at \$133/night

REGISTRATION FORM

One form per person. Please type or print clearly. Check appropriate boxes.

DAY(S) ATTENDING FRI., SEPT. 6 SAT., SEPT. 7 BOTH DAYS

	MEMBERS	NONMEMBERS	STUDENTS
1 DAY EARLY BIRD	<input type="checkbox"/> \$79	<input type="checkbox"/> \$99	<input type="checkbox"/> \$69
2 DAY EARLY BIRD	<input type="checkbox"/> \$149	<input type="checkbox"/> \$169	<input type="checkbox"/> \$139
1 DAY ADVANCE	<input type="checkbox"/> \$99	<input type="checkbox"/> \$109	<input type="checkbox"/> \$89
2 DAY ADVANCE	<input type="checkbox"/> \$169	<input type="checkbox"/> \$189	<input type="checkbox"/> \$159
1 DAY ONSITE	<input type="checkbox"/> \$119	<input type="checkbox"/> \$139	<input type="checkbox"/> \$109
2 DAY ONSITE	<input type="checkbox"/> \$189	<input type="checkbox"/> \$209	<input type="checkbox"/> \$179
LUNCH	<input type="checkbox"/> \$10 FRI., SEPT. 6	<input type="checkbox"/> \$10 SAT., SEPT. 7	
FRIDAY	<input type="checkbox"/> VEGETARIAN	<input type="checkbox"/> TURKEY	<input type="checkbox"/> ALBACORE TUNA
SATURDAY	<input type="checkbox"/> VEGETARIAN	<input type="checkbox"/> TURKEY	<input type="checkbox"/> ALBACORE TUNA



MEDICAL DIETARY RESTRICTIONS: _____

TOTAL DUE _____ \$

REGISTRANT INFORMATION

Name _____

Home Address _____

City _____ State _____ Zip _____

Email _____ Telephone _____

PAYMENT OPTIONS – CHECK ONE

Check (make payable to OTAC) MasterCard Visa AMEX

Credit Card Number _____ Exp Date _____ VCode _____

Cardholder Name _____

Cardholder Signature _____ Date _____

SUBMIT PAYMENT

Fax to: 916/294-0415, or Mail to: OTAC, PO Box 276567, Sacramento, CA 95827, or

REGISTER ONLINE

www.otaconline.org/education/school-based-OT-symposium