

OT in Oncology

3rd Annual SYMPOSIUM

Saturday,
February 1, 2020

8:30am – 4:30pm

Registration/
Light Breakfast
7:30am – 8:30am

City of Hope
Comprehensive
Cancer Center
Cooper Auditorium
(Bldg. 130)

1500 East Duarte Road
Duarte, CA 91010

Earn 7 PDUs

Sponsored by



...inspiring your learning journey



Why Attend

This Symposium presents a unique opportunity to learn from occupational therapy (OT) practitioners who are pioneering the way for improved outcomes and quality of life for oncology clients. Come learn about new treatments, share ideas, and network with other practitioners in this emerging practice area.

Who Should Attend

Practitioners, faculty, and students who are interested in learning about OT's role in oncology or looking to improve their current oncology practice.

Topic Areas

Head and Neck Cancer
Cancer and Young Adults
Palliative and End of Life Care
Managing Motivation
Alternative Exercises
Return to Work

Symposium Chair

Sherry M. Hite, MOT, OTR/L

Registration

<https://bit.ly/2020oncology>

Symposium Schedule (7 PDU's)

7:30am – 8:30am

Registration / Light Breakfast / Networking

8:30am – 8:50am

Welcome/Introduction

Sherry M. Hite, MOT, OTR/L, Manager City of Hope Comprehensive Cancer Center

8:50am – 9:50am

Occupational Therapy's Role with Patients with Head and Neck Cancer Across the Continuum

Yasi Amanat, OTD, OTR/L, Keck Hospital of USC; Stacey Morikawa, OTD, OTR/L, Chan Division at USC and Keck Medical Center of USC

This presentation will provide an overview on head and neck cancer diagnosis as well as a general intervention framework used for these patients from diagnosis through survivorship. Evidence-based intervention modules will be introduced to further address patients' quality of life and participation in meaningful occupations.

9:50am – 10:00am

Break

10:00am – 11:00am

Optimizing Health Self-Management for Adolescents and Young Adults in Oncology

Kaitlyn Cruz, OTD, OTR/L, City of Hope Comprehensive Cancer Center

This presentation will address the unique, unmet needs of adolescent and young adults diagnosed with cancer and how occupational therapy practitioners can tailor interventions to improve compliance and optimize health outcomes for this population.

11:00am – 12:00pm

Overcoming Barriers to Integrating Palliative and End of Life Care in an Acute Oncology Setting

Amy Brown, OTD, OTR/L, City of Hope Comprehensive Cancer Center and University of Irvine Medical Center; Dennis Lin, OTD, OTR/L, City of Hope Comprehensive Cancer Center

Attendees will gain practical knowledge on how to effectively overcome barriers to provide palliative care in an acute care setting through exploring the role of occupational therapy on a multidisciplinary team in an oncological hospital. Effective ways to address other aspects of palliative care will be reviewed including the needs of the caregiver, timing of services, and how to obtain and sustain referrals.

12:00pm – 1:00pm

Lunch (provided)

Networking Opportunity

1:00pm – 2:00pm

Managing Motivation: Strategies to Measure and Improve Volition for Occupational Engagement

Leanne Seckinger, MS, OTR/L, Huntsman Cancer Hospital, University of Utah Health System

Oncology patients experience role disruptions often leading to decreased engagement. Anxiety and depression related to prognosis, side effects from treatments, and functional changes can directly influence a patients' volitional level. This presentation will discuss assessments and intervention strategies to guide the understanding of a patient's learning readiness, address the timing of interventions that can influence patients to be more involved in their care, and improve the quality of life.

2:00pm – 3:00pm

East Meets West: Alternative and Complimentary Exercises for the Oncology Population

Barbara Brewer, COTA/L, St. Jude Medical Center

This is an interactive learning experience for seated yoga, tai chi, and longevity stick exercises supported by evidence-based research. Practitioners will be able to explore mind/body exercises and mindfulness practices to decrease pain and fatigue and to promote healing and improve outcomes for the oncology population.

3:00pm – 3:10pm

Break

3:10pm – 4:10pm

Return to Work: Interventions Across the Continuum of Cancer Care

Carolyn Wilson, OTR/L, Kaiser Permanente

This presentation will discuss the occupational therapy practitioner's unique role in preparing cancer patients to return to work. Understanding the effects of cancer treatment and its possible impact on returning to work, the occupational therapy practitioner has an important role in evaluating, addressing and identifying a patient's work-related goals, and developing a treatment plan to help patients to successfully return to the work setting.

4:10pm – 4:30pm

Ask the Experts Panel

This is an opportunity to ask questions of all the presenters.

2019 Symposium Attendee Comments

Thank you very much for another excellent workshop to teach OT practitioners about cancer rehab.

Great comprehensive and organized lectures.

This was amazing and inspiring.

Symposium Presenters

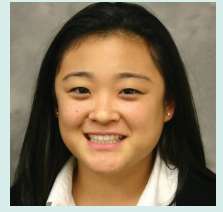
Yasi Amanat, OTD, OTR/L

Yasi Amanat currently serves as a clinical faculty member at Keck Hospital of USC where she provides direct patient care in acute and outpatient rehabilitation settings. As a doctoral resident at Keck Hospital of USC, Amanat focused on advancing occupational therapy's role for patients with head and neck cancer across the continuum of care. She continues to focus on occupational therapy programming for patients affected by oncological diseases.



Stacey Morikawa, OTD, OTR/L

Stacey Morikawa is an assistant professor of clinical occupational therapy in the Chan Division at USC and provides direct patient care at Keck Medical Center of USC. She works with patients of varying diagnoses at Keck Hospital of USC and is also the occupational therapy clinical lead at Norris Comprehensive Cancer Center, where she treats patients with oncological diseases across the disease and care trajectory.



Barbara Brewer, COTA/L

Barbara Brewer is currently an occupational therapy assistant at St. Jude Medical Center and has spent the last 10 years specializing in outpatient cancer recovery and neurological rehabilitation. She has practiced in a variety of medical settings for the past 46 years including inpatient psychiatry, acute care, inpatient and outpatient rehab, home health, skilled nursing, and community rehabilitation exercise groups. Brewer has specialty training in cancer rehab recovery and myofascial release and has developed an easy form tai chi that is designed for various patient populations with a focus on balance training and core strengthening.



Leanne Seckinger, MS, OTR/L

Leanne Seckinger has practiced for over 20 years with expertise in oncology, behavioral health, and neurologic rehabilitation. She manages the inpatient and outpatient therapy service departments at the Huntsman Cancer Hospital, University of Utah Health system. Seckinger serves as adjunct faculty member for the occupational therapy program at the University of Utah College of Health. She has co-authored and presented posters at the American Occupational Therapy Association that address patient role engagement, occupational therapy treatment programming for hematology, and bone marrow transplant services.



Amy Brown, OTD, OTR/L

Amy Brown is an OTD graduate of the University of Southern California. She currently works in acute care at both City of Hope Comprehensive Cancer Center and the University of Irvine Medical Center. Brown provides services to individuals from various diagnostic groups, including neurology, cardiology, oncology, and orthopedics.



Carolyn Wilson, OTR/L

Carolyn Wilson has over 20 years of experience as an occupational therapy practitioner in a variety of settings, including acute care, acute rehabilitation, skilled nursing facilities, home health, outpatient, mental health, and school-based occupational therapy. Currently, her work at Kaiser Permanente is divided between hospital acute care and outpatient. Wilson's focus is on providing direct patient care and building occupational therapy services and programs both locally and regionally.



Kaitlyn Cruz, OTD, OTR/L

Kaitlyn Cruz is a three-time graduate of the University of Southern California, graduating with a bachelor's degree in psychology and occupational science, and then pursuing master's and doctorate degrees in occupational therapy. Her doctorate residency was completed at City of Hope Comprehensive Cancer Center, where she conducted a quality improvement project tailored towards optimizing care and self-health-management for adolescents and young adults diagnosed with cancer.



Dennis Lin, OTD, OTR/L

Dennis Lin is an occupational therapy practitioner at City of Hope Comprehensive Cancer Center providing care, which addresses the specific needs of patients experiencing cancer and its impact on daily life. His practice focuses on symptom management with a specialty in assessing and treating visual and cognitive impairments. Lin also focuses on enhancing occupational therapy's impact on palliative care, having written a book chapter on the role of rehabilitation within interdisciplinary efforts to provide effective palliative care.



Sherry M. Hite, MOT, OTR/L, Chair, OTAC Professional Development and Leadership Committee

Sherry Hite is the Occupational Therapy Department manager at City of Hope Comprehensive Cancer Center. She serves on the Cognitive Rehabilitation Task Force for the American Congress of Rehabilitation Medicine and has presented at state and national levels on topics including cancer related cognitive impairments, comprehensive breast cancer rehabilitation, and addressing sexuality concerns in oncology. Her current research areas include the use of prehabilitation in surgical oncology, improving multidisciplinary geriatric oncology care, and the use of telemedicine in a breast cancer-recovery program.



OT in Oncology

3rd Annual SYMPOSIUM

Saturday,
February 1, 2020

8:30am – 4:30pm

Registration/
Light Breakfast
7:30am – 8:30am

City of Hope
Comprehensive
Cancer Center
Cooper Auditorium
(Bldg. 130)

1500 East Duarte Road
Duarte, CA 91010

Sponsored by



...inspiring your learning journey



REGISTRATION FEES (includes 7 PDU's)

Early Bird Advanced Registration (by Friday, December 20, 2019)

\$169 OTAC members \$189 nonmembers \$89 students

Advanced Registration (between Saturday, December 21, 2019 and Tuesday, January 21, 2020)

\$189 OTAC members \$209 nonmembers \$109 students

Onsite (if available)

\$209 OTAC members \$229 nonmembers \$129 students

REGISTRANT INFORMATION

Name _____

Title _____

Employer _____

Home Address _____

City/State/Zip _____

Email _____

Telephone _____

PAYMENT OPTIONS

MasterCard Visa AMEX Discover Check # _____

Credit Card Number _____ Exp. Date _____ VCode _____

Cardholder Name _____

Cardholder Signature _____ Date _____

TO REGISTER

Online: <https://bit.ly/2020oncology>

Fax: (916) 294-0415

Mail: OTAC, PO Box 276567, Sacramento, CA 95827 (Make checks payable to OTAC)

QUESTIONS

Email: staff@otaonline.org • **Call (toll free):** (888) 686-3225